

TM 11-6625-207-40P

TECHNICAL MANUAL

**GENERAL SUPPORT MAINTENANCE REPAIR PARTS
AND SPECIAL TOOLS LISTS (INCLUDING DEPOT
MAINTENANCE REPAIR PARTS AND SPECIAL TOOLS)**

TEST SETS, RADAR

AN/UPM-33 AND AN/UPM-33A

FSN 6625-526-0364

HEADQUARTERS, DEPARTMENT OF THE ARMY
AUGUST 1973

TECHNICAL MANUAL }
No. 11-6625-297-40P }

HEADQUARTERS
DEPARTMENT OF THE ARMY
WASHINGTON, D.C., 31 AUGUST 1973

GENERAL SUPPORT MAINTENANCE REPAIR PARTS AND
SPECIAL TOOLS LISTS (INCLUDING DEPOT MAINTENANCE
REPAIR PARTS AND SPECIAL TOOLS)

TEST SETS, RADAR
AN/UPM-33 and AN/UPM-33A
FSN 6625-526-0364

Current as of February 1973

	Paragraph	Page
SECTION I. INTRODUCTION		
Scope	1-1	2
General	1-2	2
Explanation of columns	1-3	2
Special information	1-4	4
Location of repair parts	1-5	5
Abbreviations (Not applicable)	1-6	5
Reporting equipment publication improvements	1-7	5
II. REPAIR PARTS LIST		6
III. SPECIAL TOOLS, TEST AND SUPPORT EQUIPMENT (Not applicable)		
IV. INDEX- FEDERAL NUMBER AND REFERENCE NUMBER CROSS- REFERENCE TO FIGURE AND ITEM NUMBER		41

SECTION I
INTRODUCTION

1-1. Scope

This manual lists repair parts and special tools required for the performance of general support and depot maintenance of the AN/UPM-38 and AN/UPM-33A. The PCCN for the equipment is GTEABG for all models.

NOTE

No parts authorized for stockage at direct support.

1-2. General

This repair parts and special tools list is divided into the following sections:

a. Repair Parts List—Section II. A list of repair parts authorized for the performance of maintenance at the general support and depot level. This repair parts list is arranged in alphabetical order.

b. Special Tools, Test and Support Equipment—Section III. Not applicable.

c. Index—Federal Stock Number and Reference Number Cross-Reference to Figure and Item Number—Section IV. A list, in ascending numerical sequence, of all Federal stock numbers appearing in the listings, followed by a list, in alphabetic sequence, of all reference numbers appearing in the listings. Federal stock number and reference numbers are cross-referenced to each illustration figure and item number or reference designation appearance.

1-3. Explanation of Columns

The following provides an explanation of columns found in the tabular list.

a. Source, Maintenance, and Recoverability Codes (SMR).

(1) *Source code.* Indicates the manner of acquiring support items for maintenance, repair, or overhaul of end items. Source codes are—

<i>Code</i>	<i>Explanation</i>
PA	Item procured and stocked for anticipated or known usage.
PB	Item procured and stocked for insurance purposes because essentiality dictates that a minimum quantity be available in the supply systems.
PC	Item procured and stocked and which otherwise would be coded PA except that it is deteriorative in nature.
PD	Support item, excluding support equipment, procured for initial issue or outfitting and stocked only for subsequent or additional initial issues or outfittings. Not subject to automatic replenishment.
PE	Support equipment procured and stocked for initial issue or outfitting to specified maintenance repair activities.
PF	Support equipment which will not be stocked but which will be centrally procured on demand.
PG	Item procured and stocked to provide for sustained support for the life of the equipment. It is applied to an item peculiar to the equipment which because of probable discontinuance or shutdown of production facilities would prove uneconomical to reproduce at a later time.
KD	An item of depot overhaul/repair kit and not purchased separately. Depot kit defined as a kit that provides items required at the time of overhaul or repair.
KF	An item of a maintenance kit and not purchased separately. Maintenance kit defined as a kit that provides an item that can be replaced at organizational or direct support or general support levels of maintenance.
KB	Item included in both a depot overhaul/repair kit and a maintenance kit.
MO	Item to be manufactured or fabricated at organizational level.
MF	Item to be manufactured or fabricated at direct support maintenance level.
MH	Item to be manufactured or fabricated at general support maintenance level.

<i>Code</i>	<i>Explanation</i>
MD	Item to be manufactured or fabricated at depot maintenance level.
AO	Item to be assembled at organizational level.
AF	Item to be assembled at direct support maintenance level.
AH	Item to be assembled at general support maintenance level.
AD	Item to be assembled at depot maintenance level.
XA	Item is not procured or stocked because the requirements for the item will result in the replacement of the next higher assembly.
XB	Item is not procured or stocked. If not available through salvage, requisition.
XC	Installation drawing, diagram instruction sheet, field service drawing, that is identified by manufacturers' part number.
XD	Support items can be requisitioned with justification.

NOTE

Cannibalization or salvage may be used as a source of supply for any items source coded above except those coded XA and aircraft support items as restricted by AR 700-42.

(2) *Maintenance code.* Maintenance codes are assigned to indicate the levels of maintenance authorized to USE and REPAIR support items. The maintenance codes are entered in the third and fourth positions of the Uniform SMR Code Format as follows—

(a) *Use (third position).* The maintenance code entered in the third position indicates the lowest maintenance level authorized to remove, replace, and use the support item. The maintenance code entered in the third position indicates one of the following levels of maintenance.

<i>Code</i>	<i>Application/Explanation</i>
O	Support item is removed, replaced, used at the organizational level of maintenance.

NOTE

A code "C" may be used in this position to denote crew or operator maintenance performed within organizational maintenance.

F	Support item is removed, replaced, used at the direct support maintenance level.
H	Support item is removed, replaced, used at the general support maintenance.

<i>Code</i>	<i>Application/Explanation</i>
D	Support items that are removed, replaced, used at depot only.

(b) *Repair (fourth position).* The maintenance code entered in the fourth position indicates whether the item is to be repaired and identifies the lowest maintenance level with the capability to perform complete repair (i.e., all authorized maintenance functions). When a maintenance code is not used a dash (-) sign is entered. For multi-service equipment/systems or when a code is entered, this position will contain one of the following maintenance codes as assigned by the service(s) that require the code—

<i>Code</i>	<i>Application/Explanation</i>
O	The lowest maintenance level capable of complete repair of the support item is the organizational level.
F	The lowest maintenance level capable of complete repair of the support item is direct support.
H	The lowest maintenance level capable of complete repair of the support item is general support.
D	The lowest maintenance level capable of complete repair of the support item is the depot level.
L	Repair restricted to designated Specialized Repair Activity.
Z	Non-repairable. No repair is authorized.
B	No repair is authorized. The item may be reconditioned by adjusting, lubricating, etc., at the user level. No parts or special tools are procured for the maintenance of this item.

(3) *Recoverability code.* Recoverability codes are assigned to support items to indicate the disposition action on unserviceable items. The recoverability code is entered in the fifth position of the uniform SMR Code Format as follows—

<i>Code</i>	<i>Explanation</i>
Z	Nonrepairable item. When unserviceable, condemn and dispose at the level indicated in the first digit of the maintenance code.
O	Repairable item. When uneconomically repairable, condemn and dispose at organizational level.
F	Repairable item. When uneconomically repairable, condemn and dispose at the direct support level.
H	Repairable item. When uneconomically repairable, condemn and dispose at the general support level.

- Code Explanation**
- D—Repairable item. When beyond lower level repair capability, return to depot. Condemnation and disposal not authorized below depot level.
 - L—Repairable item. Repair, condemnation, and disposal not authorized below depot/Specialized Repair Activity level.
 - A—Item requires special handling or condemnation procedures because of specific reasons (i.e., precious metal content, high dollar value, critical material or hazardous material).

b. Federal Stock Number. Indicates the Federal stock number assigned to the item and will be used for requisitioning purposes.

c. Description. Indicates the Federal item name and a minimum description required to identify the item. The last line indicates the reference number followed by the applicable Federal Supply Code for Manufacturer (FSCM) in parentheses. The FSCM is used as an element in item identification to designate manufacturer or distributor or Government agency, etc., and is identified in SB 708-42.

d. Unit of Measure (U/M). Indicates the standard or basic quantity by which the listed item is used in performing the actual maintenance function. This measure is expressed by a two-character alphabetical abbreviation; e.g., ea, in, pr, etc., and is the basis used to indicate quantities and allowances in subsequent columns. When the unit of measure differs from the unit of issue, the lowest unit of issue that will satisfy the required units of measure will be requisitioned.

e. Quantity Incorporated in Unit. This column indicates the quantity of the item used in the equipment. Subsequent appearances of the same item in the same assembly are indicated by the letters "REF".

f. 30-Day DS/GS Maintenance Allowances.

NOTE

Allowances in GS column are for GS maintenance only.

(1) The repair parts indicated by asterisk entries in separate allowance columns for GS represent those authorized for use at that category of maintenance to be requisitioned on an "as required" basis, until stockage is based on demand in accordance with AR 710-2.

(2) Allowance quantities are indicated in the special tool lists section for special tools, TMDE, and other support equipment.

g. 1-Year Allowances Per 100 Equipments/Contingency Planning Purposes. Column intentionally left blank.

h. Depot Maintenance Allowance Per 100 Equipments. This column indicates opposite the first appearance of each item the total quantity authorized for depot maintenance of 100 equipments.

i. Illustration. This column is divided as follows:

(1) **Figure number.** Indicates the figure number of the illustration on which the item is shown in TM 11-1249.

(2) **Item number.** Indicates the item number or reference designation used to reference the item in the illustration.

1-4. Special Information

a. Usable on codes are included in column 8. Uncoded items are applicable to all models. Identification of the usable on codes used in this publication are—

Code	Used on
ALX	AN/UPM-33
ALX-1	AN/UPM-33 (Bendix Model Serial Nos. below 10,000)
ALX-2	AN/UPM-33 (Hazeltine Electric Corp. Serial Nos. above 10,000).
ALX-3	AN/UPM-33 (Garod Radio Corp. Serial Nos. 1 to 21).
ALX-4	AN/UPM-33 (Northeastern Engineering Model).
ALY	AN/UPM-33A
ALY-5	AN/UPM-33A (Transitron Model)
ALY-6	AN/UPM-33A (Jetric Industries Model)
ALY-7	AN/UPM-33A (Decitron Electronics Corp. Model)

b. The following publications pertain to the equipment and its components:

- TM 11-1249 Radar Test Set AN/UPM-33 (Spectrum Analyzer TS-148/UP).
- TM 11-6625-297-20P Organizational Maintenance Repair Parts and Special Tools Lists; Test Sets, Radar AN/UPM-33 and AN/UPM-33A.

1-5. Location of Repair Parts

a. This manual contains one cross-reference index (sec IV) to be used to locate a repair part when either the Federal stock number or reference number (manufacturer's part number) is known. The first column in the index is prepared in numerical or alphanumeric sequence in ascending order. The reference numbers (manufacturer's part numbers) are listed immediately following the last listed Federal stock number in the index of Federal stock numbers.

b. When the Federal stock number or reference number is known, follow the procedures given in (1) and (2) below.

(1) Refer to the index of Federal stock numbers (sec IV) and locate the Federal stock number or reference number. The FSN and reference number are cross-referenced to the applicable figure and item number or reference designation.

(2) Refer to the repair parts list (sec II) and locate the figure number (col 10a) and item number or reference designation (col 10b) as noted in the FSN index.

c. When the figure and item number or reference designation are known, scrutinize columns 10a and 10b of the repair parts list (sec II) until the item is located.

d. When the FSN, reference number, figure number, item number and reference designation are not known, scrutinize column 3 of the repair parts list (sec II), which is arranged in alphabetical order.

1-6. Abbreviations

Not applicable.

1-7. Reporting of Equipment Publication Improvements

The reporting of errors, omissions, and recommendations for improving this publication by the individual user is encouraged. Reports should be submitted on DA Form 2028 (Recommended Changes to Publications) and forwarded direct to Commander, US Army Electronics Command, ATTN: AMSEL-MA-CRA, Fort Monmouth, N.J. 07703.

SECTION II.

TM 11-6625-297-40P

(1) SMR CODE	(2) FEDERAL STOCK NUMBER	(3) DESCRIPTION REFERENCE NUMBER & MFR. CODE USABLE ON CODE	(4) UNIT OF MEAS	(5) QTY INC IN UNIT	(6) 30-DAY BS MAINT ALLOWANCE			(7) 30-DAY GS MAINT ALLOWANCE			(8) 1-YR ALW PER 100 EQUIP CHRGY	(9) DEPOT MAINT ALW PER 100 EQUIP	(19) ILLUSTRATION	
					(a)	(b)	(c)	(a)	(b)	(c)			(a)	(b)
					1-20	21-30	31-100	1-20	21-30	31-100			FIGURE NO.	ITEM NO.
PAOZZ	5955-337-6487	ADAPTER UG-103/U E202 USED IN ALX-1,2,3, 4 AND ALY-5,6,7 UG103U (80058)	EA	1				*	*	*		4	5-6	E202
PAHZZ	5935-256-8371	ADAPTER, CONNECTOR UG-276/U P101 USED.. IN ALX-2,3,4 AND ALY-5,6,7 UG276U (80058)	EA	1				*	*	*		4		P101
PAHZZ	6625-303-3386	ALIGNMENT TOOL, ELECTRONIC EQUIPMENT H108. USED IN ALX-1,2,3,4 A35-3026 (72598)	EA	1				*	*	*		3	5-28	H108
PAHZZ	6145-914-9012	CABLE, POWER, ELECTRICAL W201A, W202A (10.. FEET LONG) USED IN ALX-1,2,3,4 DCOP2 (81349)	EA	1				*	*	*		10		
PAHZZ	5905-230-5146	ATTENUATOR, FIXED E101C USED IN ALX-1,3,4 A4167 (80249)	EA	1				*	*	*		5	3-7	
PADZZ	5895-099-0228	BEZEL, INSTRUMENT MOUNTING O121 SECURES.. CATHODE RAY TUBE USED IN ALX-2,4 A3956 (80249)	EA	1				*	*	*		3		O121
PADZZ	5895-355-8552	BEZEL, INSTRUMENT MOUNTING O122 SECURES.. DIAL WINDOW USED IN ALX-2 AND ALY-5,6 C2220 (24018)	EA	1				*	*	*		3		O122
PADZZ	6625-219-6172	BEZEL, INSTRUMENT MOUNTING O122 SECURES.. CRT WINDOW USED IN ALX-3 AND ALY-6 B1418 (91820)	EA	1				*	*	*		3		O121
PAHZZ	6625-219-6172	BEZEL O121 USED IN ALY-5	EA	1				*	*	*		3		O121
PADZZ	6625-051-5981	BEZEL, INSTRUMENT MOUNTING NO-REF-DESIG... USED IN ALY-7 B13-3007 (72598)	EA	1								3		
PADZZ	6695-052-1538	BEZEL, INSTRUMENT MOUNTING NO-PEF-DESIG... USED IN ALY-7 190800365 (06053)	EA	1								3		
PADZZ	5820-393-1242	BUSHING, SLEEVE NO-REF-DESIG ALLOWS..... PASSAGE OF SHAFT THRU PANEL USED IN ALY-6 1560 (88245)	EA	1								3		
PAHZZ	6145-504-1015	CABLE, POWER, ELECTRICAL W201A (7 FEET.... LONG) USED IN ALY-5,6,7 CO-03MGF3-16-036*	EA	1				*	*	*		10	5-6	
PAHZZ	6145-161-4601	CABLE, RADIO FREQUENCY RG-58/U W101A (1.. FOOT LONG) USED IN ALX-1,2,3,4 AND ALY-5, 6,7 O (81349)	EA	1				*	*	*		10	5-2A	
PAHZZ	6145-170-7837	CABLE, RADIO FREQUENCY RG-9B/U W203A (6.. FT. LONG) USED ALX-1,2,3,4 AND ALY-5,6,7 RG9BU (80058)	EA	1				*	*	*		10	5-6	
PAHZZ	5960-300-8061	CAP, ELECTRICAL E108 F-XTAL HOLDER (USED IN ALX-3 AND ALY-7 A32-3055 (72598)	EA	1				*	*	*		3		E108
PADZZ	5920-244-5150	CAP, ELECTRICAL F101B FOR FUSEHOLDER USED IN ALX-4 AND ALY-6 9435 1-2 (10133)	EA	1				*	*	*		3		
PAHZZ	5910-577-9150	CAPACITOR, FIXED, CERAMIC, DIELECTRIC C106.. CONTINUED	EA	2				*	*	*		3	7-22	C106

SECTION II

TM 11-6625-297-40P

(1) SMR CODE	(2) FEDERAL STOCK NUMBER	(3) DESCRIPTION REFERENCE NUMBER & MFR. CODE USABLE ON CODE	(4) UNIT OF MEAS	(5) QTY INC IN UNIT	(6) 30-DAY DS MAINT ALLOWANCE			(7) 30-DAY GS MAINT ALLOWANCE			(8) 1-YR ALW PER 100 EQUIP CENCY	(9) DEF ST MAINT ALW PER 100 EQUIP	(10) ILLUSTRATION	
					(a)	(b)	(c)	(a)	(b)	(c)			(a)	(b)
					1-20	21-30	31-100	1-20	21-30	31-100			FIGURE NO.	ITEM NO.
		CONTINUED												
PAHZZ	5910-577-9150	CO-03MGF3-16-0369 ALY-5,6,7 CC21HM100C (81349) CAPACITOR, FIXED, CERAMIC, DIELECTRIC C113.. 10 UUF 500 VDC USED IN ALX-1,2,3,4 AND ALY-5,6,7	EA	REF				*	*	*			7-22	C113
PAHZZ	5910-666-5962	CC21HM100C (81349) CAPACITOR, FIXED, CERAMIC, DIELECTRIC C143.. USED IN ALY-6	EA	1				*	*	*		3		C143
PAHZZ	5910-101-5599	DD3-103 (71390) CAPACITOR, FIXED, MICA, DIELECTRIC C114 14.. UUF PORN5PCT 500 VDC USED IN ALX-1,2,3, 4 AND ALY-5,6,7	EA	1				*	*	*		3	7-22	C114
PAHZZ	5910-827-4642	CN200150K (81349) CAPACITOR, FIXED, MICA, DIELECTRIC C105 100 UUF PORN5PCT 500 VDC USED IN ALY-7	EA	5				*	*	*		3	5-2	C105
PAHZZ	5910-827-4642	CN15C101JN3 (81349) CAPACITOR, FIXED, MICA, DIELECTRIC C107 100 UUF PORN5PCT 500 VDC USED IN ALY-7	EA	REF				*	*	*			5-1	C107
PAHZZ	5910-827-4642	CN15C101JN3 (81349) CAPACITOR, FIXED, MICA, DIELECTRIC C110 100 UUF PORN5PCT 500 VDC USED IN ALY-7	EA	REF				*	*	*			5-2	C110
PAHZZ	5910-827-4642	CN15C101JN3 (81349) CAPACITOR, FIXED, MICA, DIELECTRIC C111 100 UUF PORN5PCT 500 VDC USED IN ALY-7	EA	REF				*	*	*			5-2	C111
PAHZZ	5910-827-4642	CN15C101JN3 (81349) CAPACITOR, FIXED, MICA, DIELECTRIC C142 100 UUF PORN5PCT 500 VDC USED IN ALY-7	EA	REF				*	*	*			7-22	C142
PAHZZ	5910-101-5616	CN15C101JN3 (81349) CAPACITOR, FIXED, MICA, DIELECTRIC C103 100 UUF PORN5PCT 500 VDC USED IN ALX-1,2,3,4 AND ALY-5,6,7	EA	5				*	*	*		3	5-2	C103
PAHZZ	5910-101-5616	CN20C101J (81349) CAPACITOR, FIXED, MICA, DIELECTRIC C104 100 UUF PORN5PCT 500 VDC USED IN ALX-1,2,3,4 AND ALY-5,6,7	EA	REF				*	*	*			7-22	C104
PAHZZ	5910-101-5616	CN20C101J (81349) CAPACITOR, FIXED, MICA, DIELECTRIC C107 100 UUF PORN5PCT 500 VDC USED IN ALX-1,2,3,4 AND ALY-5,6,7	EA	REF				*	*	*			5-1	C107
PAHZZ	5910-101-5616	CN20C101J (81349) CAPACITOR, FIXED, MICA, DIELECTRIC C110 100 UUF PORN5PCT 500 VDC USED IN ALX-1,2,3,4 AND ALY-5,6,7	EA	REF				*	*	*			5-2	C110
PAHZZ	5910-101-5616	CN20C101J (81349) CAPACITOR, FIXED, MICA, DIELECTRIC C111 100 UUF PORN5PCT 500 VDC USED IN ALX-1,2,3,4 AND ALY-5,6,7	EA	REF				*	*	*			5-2	C111
PAHZZ	5910-101-5616	CN20C101J (81349) CAPACITOR, FIXED, MICA, DIELECTRIC C114 100 UUF PORN5PCT 500 VDC USED IN ALY-7 ALX	EA	1				*	*	*		3	7-22	C114

SECTION II

TM 11-6625-297-40P

(1) SMR CODE	(2) FEDERAL STOCK NUMBER	(3) DESCRIPTION REFERENCE NUMBER & MFR. CODE USABLE ON CODE	(4) UNIT OF MEAS.	(5) QTY INC IN UNIT	(6) 30-DAY OF MAINT ALLOWANCE			(7) 90-DAY OF MAINT ALLOWANCE			(8) 1-YR ALY PER 100 EQUIP. ONTOCY	(9) DEPOT MANTY ALY PER 100 EQUIP.	(10) ILLUSTRATION	
					(a)	(b)	(c)	(a)	(b)	(c)			(a)	(b)
					1-20	21-30	31-100	1-20	21-30	31-100			FIGURE NO.	ITEM NO.
PAHZZ	5910-840-9738	CAPACITOR, FIXED, MICA, DIELECTRIC C126 510 1000 UUF PORMSPCT 500 VDC USED IN ALY-7 CN208511JN3 (81349) ALY	EA	1				*	*	*		3	7-7	C126
PAHZZ	5910-101-4883	CAPACITOR, FIXED, MICA, DIELECTRIC C126 510 1000 UUF PORMSPCT 500 VDC USED IN ALX-1,2,3,4 AND ALY-5,6,7 CN20C511J (81349) ALY	EA	1				*	*	*		3	7-7	C126
PAHZZ	5910-666-6358	CAPACITOR, FIXED, MICA, DIELECTRIC C101..... 1000 UUF PORMSPCT 500 VDC USED IN ALY-5, 6,7 CN25E102J (81349) ALY	EA	7				*	*	*		3	5-1	C101
PAHZZ	5910-666-6358	CAPACITOR, FIXED, MICA, DIELECTRIC C102..... 1000 UUF PORMSPCT 500 VDC USED IN ALY-5, 6,7 CN25E102J (81349) ALY	EA	REF				*	*	*			7-22	C102
PAHZZ	5910-666-6358	CAPACITOR, FIXED, MICA, DIELECTRIC C103..... 1000 UUF PORMSPCT 500 VDC USED IN ALY-5, 6,7 CN25E102J (81349) ALY	EA	REF				*	*	*			7-22	C103
PAHZZ	5910-666-6358	CAPACITOR, FIXED, MICA, DIELECTRIC C104..... 1000 UUF PORMSPCT 500 VDC USED IN ALY-5, 6,7 CN25E102J (81349) ALY	EA	REF				*	*	*			7-22	C104
PAHZZ	5910-666-6358	CAPACITOR, FIXED, MICA, DIELECTRIC C112..... 1000 UUF PORMSPCT 500VDC USED IN ALY-5, 6,7 CN25E102J (81349) ALY	EA	REF				*	*	*			5-2	C112
PAHZZ	5910-666-6358	CAPACITOR, FIXED, MICA, DIELECTRIC C118..... 1000 UUF PORMSPCT 500 VDC USED IN ALY-5, 6,7 CN25E102J (81349) ALY	EA	REF				*	*	*			5-2	C118
PAHZZ	5910-666-6358	CAPACITOR, FIXED, MICA, DIELECTRIC C141..... 1000 UUF PORMSPCT 500 VDC USED IN ALY-5, 6,7 CN25E102J (81349) ALY	EA	REF				*	*	*			5-2	C141
PAHZZ	5910-101-4023	CAPACITOR, FIXED, MICA, DIELECTRIC C101..... 1000 UUF PORMSPCT 500 VDC USED IN ALX- 1,2,3,4 CN30B102K (81349) ALX	EA	7				*	*	*		3	5-1	C101
PAHZZ	5910-101-4023	CAPACITOR, FIXED, MICA, DIELECTRIC C102..... 1000 UUF PORMSPCT 500 VDC USED IN ALX- 1,2,3,4 CN30B102K (81349) ALX	EA	REF				*	*	*			7-22	C102
PAHZZ	5910-101-4023	CAPACITOR, FIXED, MICA, DIELECTRIC C103..... 1000 UUF PORMSPCT 500VDC USED IN ALX-1, 2,3,4 CN30B102K (81349) ALX	EA	REF				*	*	*			7-22	C103
PAHZZ	5910-101-4023	CAPACITOR, FIXED, MICA, DIELECTRIC C104..... 1000 UUF PORMSPCT 500 VDC USED IN ALX- 1,2,3,4 CN30B102K (81349) ALX	EA	REF				*	*	*			7-22	C104
PAHZZ	5910-101-4023	CAPACITOR, FIXED, MICA, DIELECTRIC C112..... CN30B102K (81349) ALX	EA	REF				*	*	*			5-2	C112

CONTINUED

SECTION II.

TM 11-6625-297-40P

(1) SMR CODE	(2) FEDERAL STOCK NUMBER	(3) DESCRIPTION REFERENCE NUMBER & MFR. CODE USABLE ON CODE	(4) UNIT OF MEAS	(5) QTY INC IN UNIT	(6) 30-DAY OR MAINT ALLOWANCE			(7) 30-DAY OR MAINT ALLOWANCE			(8) 1-CR ALU PER 100 EQUIP CHGCT	(9) DISPOT MAINT ALU PER 100 EQUIP	(10) ILLUSTRATION	
					(a)	(b)	(c)	(a)	(b)	(c)			(a)	(b)
					1-20	21-50	51-100	1-20	21-50	51-100			FIGURE NO.	ITEM NO.
		CONTINUED												
PAHZZ	5910-101-4023	1000 UUF PORM10PCT 500 VDC USED IN ALX-1,2,3,4 CM30B102K (81349) ALX CAPACITOR, FIXED, MICA, DIELECTRIC C118.....	EA	REF				*	*	*			5-2	C118
PAHZZ	5910-101-4023	1000 UUF PORM10PCT 500 VDC USED IN ALX-1,2,3,4 CM30B102K (81349) ALX CAPACITOR, FIXED, MICA, DIELECTRIC C141.....	EA	REF				*	*	*			5-2	C141
PAHZZ	5910-842-8564	1000 UUF PORM10PCT 500 VDC USED IN ALX-1,2,3,4 CM30B102K (81349) ALX CAPACITOR, FIXED, MICA, DIELECTRIC C108.....	EA	6				*	*	*	3		5-2	C108
PAHZZ	5910-842-8564	10000 UUF PORM5PCT 300 VDC USED IN ALY-7 CM35B103JN3 (81349) ALY CAPACITOR, FIXED, MICA, DIELECTRIC C109.....	EA	REF				*	*	*			5-2	C109
PAHZZ	5910-842-8564	10000 UUF PORM5PCT 300 VDC USED IN ALY-7 CM35B103JN3 (81349) ALY CAPACITOR, FIXED, MICA, DIELECTRIC C129.....	EA	REF				*	*	*			7-7	C129
PAHZZ	5910-842-8564	10000 UUF PORM5PCT 300 VDC USED IN ALY-7 CM35B103JN3 (81349) ALY CAPACITOR, FIXED, MICA, DIELECTRIC C132.....	EA	REF				*	*	*			5-1	C132
PAHZZ	5910-842-8564	10000 UUF PORM5PCT 300 VDC USED IN ALY-7 CM35B103JN3 (81349) ALY CAPACITOR, FIXED, MICA, DIELECTRIC C133.....	EA	REF				*	*	*			5-1	C133
PAHZZ	5910-842-8564	10000 UUF PORM5PCT 300 VDC USED IN ALY-7 CM35B103JN3 (81349) ALY CAPACITOR, FIXED, MICA, DIELECTRIC C139.....	EA	REF				*	*	*			5-1	C139
PAHZZ	5910-101-5766	10000 UUF PORM10PCT 500 VDC USED IN ALX-1,2,3,4 AND ALY-5,6 CM35C103K (81349) ALY CAPACITOR, FIXED, MICA, DIELECTRIC C108.....	EA	6				*	*	*	3		5-2	C108
PAHZZ	5910-101-5766	10000 UUF PORM10PCT 500 VDC USED IN ALX-1,2,3,4 AND ALY-5,6 CM35C103K (81349) ALY CAPACITOR, FIXED, MICA, DIELECTRIC C109.....	EA	REF				*	*	*			5-2	C109
PAHZZ	5910-101-5766	10000 UUF PORM10PCT 500 VDC USED IN ALX-1,2,3,4 AND ALY-5,6 CM35C103K (81349) ALY CAPACITOR, FIXED, MICA, DIELECTRIC C129.....	EA	REF				*	*	*			7-22	C129
PAHZZ	5910-101-5766	10000 UUF PORM10PCT 500 VDC USED IN ALX-1,2,3,4 AND ALY-5,6 CM35C103K (81349) ALY CAPACITOR, FIXED, MICA, DIELECTRIC C132.....	EA	REF				*	*	*			5-1	C132
PAHZZ	5910-101-5766	10000 UUF PORM10PCT 500 VDC USED IN ALX-1,2,3,4 AND ALY-5,6 CM35C103K (81349) ALY CAPACITOR, FIXED, MICA, DIELECTRIC C133.....	EA	REF				*	*	*			5-1	C133
PAHZZ	5910-101-5766	10000 UUF PORM10PCT 500 VDC USED IN ALX-1,2,3,4 AND ALY-5,6 CM35C103K (81349) ALY CAPACITOR, FIXED, MICA, DIELECTRIC C139.....	EA	REF				*	*	*			7-22	C139
		CONTINUED												

SECTION II.

TM 11-6625-297-40P

(1) SMR CODE	(2) FEDERAL STGCE NUMBER	(3) DESCRIPTION REFERENCE NUMBER & MFR. CODE USABLE SN CODE	(4) UNIT OF MEAS	(5) QTY IN UNIT	(6) 30-DAY DS MAINT ALLOWANCE			(7) 30-DAY SS MAINT ALLOWANCE			(8) 1-YR ALU PER 100 EQUIP CPTCY	(9) DEPOT MAINT ALU PER 100 EQUIP	(10) ILLUSTRATION	
					(a)	(b)	(c)	(a)	(b)	(c)			(a)	(b)
					1-20	21-50	51-100	1-20	21-50	51-100			FIG' RE NO.	ITEM NO.
		CONTINUED												
PAHZZ	5910-129-9231	1,2,3,4 AND ALY-5,6 CM35C103K (81349) CAPACITOR, FIXED, PAPER, DIELECTRIC C120.... 100000 UUF PORN10PCT 600 VDC USED IN ALX-1,2,3	EA	1				*	*	*		3	5-1	C128
PAHZZ	5910-126-9212	CP53B1EF104K (81349) ALX CAPACITOR, FIXED, PAPER, DIELECTRIC C119.... 100,000 UUF P20PCT H10PCT 600 VDC USED IN ALX-1 C119A,B,C COMPRISE ONE UNIT	EA	1				*	*	*		3	7-8	C119
PAHZZ	5910-126-9231	CP67B5EF164V (81349) ALX CAPACITOR, FIXED, PAPER, DIELECTRIC C119.... 100,000 UUF P20PCT H10PCT 600 VDC USED IN ALX-2,3,4 AND ALY-5,6,7 C119A,B,C COMPRISE OF ONE UNIT	EA	1				*	*	*		3	7-8	C119
PAHZZ	5910-112-5794	CP69B9EF104V1 (81349) CAPACITOR, FIXED, PAPER, DIELECTRIC C140....	EA	1				*	*	*		3	5-1	C140
PAHZZ	5910-112-0813	CP54B1EF104K1 (81349) CAPACITOR, FIXED, PAPER, DIELECTRIC C122.... 100000 UUF PORN10PCT 600 VDC USED IN ALX-1,2,3,4 AND ALY-5,6,7	EA	2				*	*	*		3	5-1	C122
PAHZZ	5910-112-6813	CP65B1EF104K1 (81349) CAPACITOR, FIXED, PAPER, DIELECTRIC C123.... 100000 UUF PORN10PCT 600VDC USED IN ALX- 1,2,3,4 AND ALY-5,6,7	EA	REF				*	*	*			5-1	C123
PAHZZ	5910-129-9231	CP65B1EF104K1 (81349) CAPACITOR, FIXED, PAPER, DIELECTRIC C121.... 100000 UUF PORN10PCT 1000 VDC USED IN ALX-1,2,3,4 AND ALY-5,6,7	EA	1				*	*	*		3	5-1	C121
PAHZZ	5910-126-9179	CP52B1EG104K1 (81349) CAPACITOR, FIXED, PAPER, DIELECTRIC C117.... 100,000 UUF P20PCT H10PCT 1000 VDC USED IN ALX-1,2,3,4 AND ALY-5,6,7 C117A,B COMPRISE ONE UNIT	EA	1				*	*	*		3	7-8	C117
PAHZZ	5910-126-9196	CP53B4EG104V (81349) CAPACITOR, FIXED, PAPER, DIELECTRIC C115.... 100000 UUF P20PCT H10PCT 1000 VDC USED IN ALX-1,2,3,4 AND ALY-5,6,7	EA	1				*	*	*		3	5-1	C115
PAHZZ	5910-160-1149	CP67B5EF104V1 (81349) CAPACITOR, FIXED, PAPER, DIELECTRIC C128.... 100000 UUF P20PCT H10PCT 2500 VDC USED IN ALX-4	EA	1				*	*	*		3	5-1	C128
PAHZZ	5910-669-1484	251ACB (00658) ALX CAPACITOR, FIXED, PAPER, DIELECTRIC C128.... 100000 UUF PORN10PCT 2500 VDC USED IN ALY-5	EA	1				*	*	*		3	5-1	C128
PAHZZ	5910-660-7083	2516CT (71471) ALY CAPACITOR, FIXED, PAPER, DIELECTRIC C128.... 100000 UUF PORN10PCT 2500 VDC USED IN ALY-5	EA	1				*	*	*		3	5-1	C128
PAHZZ	5910-187-6582	19030 (14018) ALY CAPACITOR, FIXED, PAPER, DIELECTRIC C130....	EA	1				*	*	*		3	5-1	C130
		CONTINUED												

SECTION II.

TM 11-6625-297-40P

(1) SMR CODE	(2) FEDERAL STOCK NUMBER	(3) DESCRIPTION REFERENCE NUMBER & MFR. CODE USABLE ON CODE	(4) UNIT OF MEAS.	(5) QTY REQ IN UNIT	(6) 30-DAY DEMAND ALLOWANCE			(7) 90-DAY DEMAND ALLOWANCE			(8) 1-YR AVG PER 100 EQUIP CONTACT	(9) DEPOT MANT AVG PER 100 EQUIP	(10) ILLUSTRATION	
					(a)	(b)	(c)	(a)	(b)	(c)			(a)	(b)
					1-30	31-60	61-90	1-30	31-60	61-90			FIGURE NO.	ITEM NO.
		CONTINUED												
PAHZZ	5910-262-8547	100000 UUF P20PCT M10PCT 1000 VDC USED ALX-1,3,4 AND ALY-5 CP70E1EJ254K (81349) CAPACITOR, FIXED, PAPER, DIELECTRIC C130.... 250000 UUF P20PCT M10PCT 2000 VDC USED IN ALX-2	EA	1				*	*	*		3	5-1	C130
PAHZZ	5910-052-1462	2009MB (71471) ALX CAPACITOR, FIXED, PAPER, DIELECTRIC C130.... 100000 UUF 2500 VDC USED IN ALY-7	EA	1				*	*	*		3	5-1	C130
PAHZZ	5910-051-1464	190B09030-000 (06053) ALY CAPACITOR, FIXED, PAPER, DIELECTRIC C128.... 250000 UUF 2000 VDC USED IN ALY-7	EA	1				*	*	*		3	5-1	C128
PAHZZ	5910-112-6977	190B09031-00 (06053) ALY CAPACITOR, FIXED, PAPER, DIELECTRIC C124.... 500000 UUF PORM10PCT 600 VDC USED IN ALX-1,2,3,4 AND ALY-5,6,7	EA	2				*	*	*		3	5-1	C124
PAHZZ	5910-112-6977	CP63B1EF504K1 (81349) CAPACITOR, FIXED, PAPER, DIELECTRIC C125.... 500000 UUF PORM10PCT 600 VDC USED IN ALX-1,2,3,4 AND ALY-5,6,7	EA	REF				*	*	*		3	5-2B	C125
PAHZZ	5910-112-6814	CP65B1EF504K1 (81349) CAPACITOR, FIXED, PAPER, DIELECTRIC C120.... 500000 UUF PORM10PCT 600 VDC USED IN ALX-1,2,3,4 AND ALY-5,6,7	EA	1				*	*	*		3	5-2B	C120
PAHZZ	5910-280-5829	CP65B1EF504K1 (81349) CAPACITOR, FIXED, PAPER, DIELECTRIC C134 1. UF PORM10PCT 1500 VDC USED IN ALX-1,3,4 AND ALY-5	EA	2				*	*	*		3	5-1	C134
PAHZZ	5910-280-5829	CP70E1EH105K (81349) CAPACITOR, FIXED, PAPER, DIELECTRIC C135 1. UF PORM10PCT 1500 VDC USED IN ALX-1,3,4 AND ALY-5	EA	REF				*	*	*			5-1	C135
PAHZZ	5910-666-8230	CP70E1EH105K (81349) CAPACITOR, FIXED, PAPER, DIELECTRIC C134 1. UF P20PCT M10PCT 1500 VDC USED IN ALX-2	EA	2				*	*	*		3	5-1	C134
PAHZZ	5910-666-8230	C75-16-1944 (80067) ALX CAPACITOR, FIXED, PAPER, DIELECTRIC C135 1. UF P20PCT M10PCT 1500 VDC USED IN ALX-2	EA	REF				*	*	*			5-1	C135
PAHZZ	5910-112-7093	C75-16-1944 (80067) ALX CAPACITOR, FIXED, PAPER, DIELECTRIC C134 1. UF PORM10PCT 2000 VDC USED IN ALY-6	EA	2				*	*	*		3	5-1	C134
PAHZZ	5910-112-7093	CP70E1EJ105K (81349) ALY CAPACITOR, FIXED, PAPER, DIELECTRIC C135 1. UF PORM10PCT 2000 VDC USED IN ALY-6	EA	REF				*	*	*			5-1	C135
PAHZZ	5910-186-8415	CP70E1EJ105K (81349) ALY CAPACITOR, FIXED, PAPER, DIELECTRIC C134 1. UF PORM10PCT 1500 VDC USED IN ALY-7	EA	2				*	*	*		3	5-1	C134
PAHZZ	5910-186-8415	CP70B1EH105K1 (81349) ALY CAPACITOR, FIXED, PAPER, DIELECTRIC C135 1. UF PORM10PCT 1500 VDC USED IN ALY-7	EA	REF				*	*	*			5-1	C135
		CP70B1EH105K1 (81349) ALY												

SECTION II.

TM 11-6625-297-40P

(1) SIR CODE	(2) FEDERAL STOCK NUMBER	(3) DESCRIPTION REFERENCE NUMBER & MFR. CODE USABLE ON CODE	(4) UNIT OF MEAS	(5) QTY INC IN UNIT	(6) 30-DAY DS MAINT ALLOWANCE			(7) 30-DAY GS MAINT ALLOWANCE			(8) 1-YR ALW PER 100 EQUIP CNTGCT	(9) DEPOT MAINT ALW PER 100 EQUIP	(10) ILLUSTRATION	
					(a)	(b)	(c)	(a)	(b)	(c)			(a)	(b)
					1-20	21-50	51-100	1-20	21-50	51-100			FIGURE NO.	ITEM NO.
PAHZZ	5910-193-0359	CAPACITOR, FIXED, PAPER, DIELECTRIC C116 2. UF PORH10PCT 600 VDC USED IN ALX-1,2,3,4 AND ALY-5,6,7 CP5481EF205K1 (81349)	EA	2				*	*	*		3	5-1	C116
PAHZZ	5910-193-0359	CAPACITOR, FIXED, PAPER, DIELECTRIC C127 2. UF PORH10PCT 600 VDC USED IN ALX-1,2,3,4 AND ALY-5,6,7 CP5481EF205K1 (81349)	EA	REF				*	*	*			5-1	C127
PAHZZ	5910-129-1394	CAPACITOR, FIXED, PAPER, DIELECTRIC C137 8. UF P20E M10R 600 VDC USED IN ALX-1,2,4 C137A,B,C COMPRISE ONE UNIT RE48A468PT483345 (80064)	EA	1				*	*	*		3	7-8	C137
PAHZZ	5910-649-1804	CAPACITOR, FIXED, PAPER, DIELECTRIC C137 8. UF, P20R, M10R 600 VDC USED IN ALX-1,2, 4 C137A,B,C COMPRISE ONE UNIT D3-3008 (72598)	EA	1				*	*	*		3	7-8	C137
PAHZZ	5910-507-3681	CAPACITOR, FIXED, PAPER, DIELECTRIC C137 8. UF, P10R, M20R 600 VDC USED IN ALX-1,2, 4 C137A,B,C COMPRISE ONE UNIT B0165-05145 (12065)	EA	1				*	*	*		3	7-8	C137
PAHZZ	5910-660-7477	CAPACITOR, FIXED, PAPER, DIELECTRIC C137..... USED IN ALY-6, C137A,B,C COMPRISE ONE UNIT C2211 (91820)	EA	1				*	*	*		3	7-8	C137
PADZZ	6625-355-9359	190C00332 (06053) CARRIAGE ASSEMBLY A102 CARRIAGE MT-..... 325/U, USED IN ALX-2 A4017 (80249)	EA	1								3	1-1	A102
PAHZZ	5340-351-8418	CATCH, LUGGAGE H128 USED IN ALX-2..... LT1007-1 (80249)	EA	2				*	*	*		3		H128
PAHZZ	5950-223-3876	CHOKE, RADIO FREQUENCY L105 USED IN ALY- 5,6 A980 (91820)	EA	1				*	*	*		3	5-2	L105
PAHZZ	6625-404-7543	CLAMP, ELECTRICAL H113A USED IN ALX-1,2,.. 3,4 720155P1 (79500)	EA	2				*	*	*		3		
PAHZZ	6625-404-7543	CLAMP, ELECTRICAL H113B USED IN ALX-1,2,.. 3,4 7820155P1 (79500)	EA	REF				*	*	*				
PAHZZ	5960-774-9478	CLAMP, ELECTRICAL H114 USED IN ALX-1,2 E (79500)	EA	1				*	*	*		3		H114
PAHZZ	5340-141-3970	CLAMP, RIM CLENCHING NO-REF-DESIG USED. IN ALY-7 190A00131 (06053)	EA	1				*	*	*		3		J103
PAHZZ	5940-186-8952	CLIP, ELECTRICAL J103 PLATE CAP CLIP FOR V110 USED IN ALX-1,2,3,4 AND ALY-5,6 91SBC (01009)	EA	1				*	*	*		3		J104
PAHZZ	5995-195-9684	CLIP, ELECTRICAL J104 PLATE CAP CLIP FOR V115 USED IN ALX-1,2,3,4 AND ALY-5,6 90BC (01CC9)	EA	1				*	*	*		3		J104

SECTION II.

TM 11-6625-297-40P

(1) SNR CODE	(2) FEDERAL STOCK NUMBER	(3) DESCRIPTION REFERENCE NUMBER & MFR. CODE USABLE ON CODE	(4) UNIT OF MEAS	(5) QTY INC IN UNIT	(6) 30-DAY BS MAINT ALLOWANCE			(7) 30-DAY BS MAINT ALLOWANCE			(8) 1-YR ALW PER 100 EQUIP CATEGY	(9) DEPOT MAINT ALW PER 100 EQUIP	(10) ILLUSTRATION	
					(a)	(b)	(c)	(a)	(b)	(c)			(a)	(b)
					1-20	21-50	51-100	1-20	21-50	51-100			FIGURE NO.	ITEM NO.
PAHZZ	5940-052-1477	CLIP, ELECTRICAL NO-REF-DESIG USED IN... ALY-7	EA	1				*	*	*		3		
PAHZZ	5995-280-1176	90TSL (01009) CLIP, ELECTRICAL NO-REF-DESIG USED ALY-7	EA	1				*	*	*		3		
PAHZZ	5950-256-2374	91SL (01009) COIL, RADIO FREQUENCY L101 USED IN ALX-1, 2,3,4	EA	1				*	*	*		3	5-1	L101
PAHZZ	5950-547-8038	771325061 (65034) COIL, RADIO FREQUENCY L101 USED AS FIRST IF COIL USED IN ALX-4 AND ALY-5	EA	1				*	*	*		3	5-1	L101
PAHZZ	5950-089-0075	CO165-05CS6-1 (12065) COIL, RADIO FREQUENCY L101 1.35 TO 3.5.. UH USED IN ALY-7	EA	1				*	*	*		3	5-1	L101
PAHZZ	5950-892-8278	190800130-01 (06053) COIL, RADIO FREQUENCY L102 4.4 UH USED. IN ALY-7	EA	1				*	*	*		3	5-1	L102
PAHZZ	5950-508-2402	190800130-02 (06053) COIL, RADIO FREQUENCY L103 USED IN ALX- 1,2,3,4	EA	1				*	*	*		3	7-8	L103
PAHZZ	5950-547-8039	771328061 (79500) COIL, RADIO FREQUENCY L103 USED IN ALY- 5	EA	1				*	*	*		3	7-8	L103
PAHZZ	5950-568-5000	CO165-0511 (12065) COIL, RADIO FREQUENCY L103 USED AS 2ND.. IF COIL USED IN ALY-6	EA	1				*	*	*		3	7-8	L103
PAHZZ	5950-054-0374	A889 91820 COIL, RADIO FREQUENCY L103 USED IN ALY- 7	EA	1				*	*	*		3	7-8	L103
PAHZZ	5950-648-3214	190A00211 (06053) COIL, RADIO FREQUENCY L105 USED IN ALX- 1,2,3,4	EA	1				*	*	*		3	5-2	L105
PAHZZ	5950-054-6416	25720 (12065) COIL, RADIO FREQUENCY L105 0.4 UH USED. IN ALY-7	EA	1				*	*	*		3	5-2	L105
PAHZZ	5985-295-9663	190810215 (06053) COIL, RADIO FREQUENCY NO-REF-DESIG USED. IN ALY-7	EA	1				*	*	*		3		
PAHZZ	5950-507-5584	NS90059-39 (81349) COIL ASSEMBLY, ADJUSTABLE T101 USED IN.. ALY-5	EA	1				*	*	*		3	5-2	T101
PAOZZ	5935-518-9653	CO165-05CS63 (12065) CONNECTOR, PLUG, ELECTRICAL P202 USED IN. AL-1,2,3,4	EA	1				*	*	*		3		P202
PAOZZ	5935-636-7145	UP120M (81349) CONNECTOR, PLUG, ELECTRICAL P202 USED IN. ALX-5,6,7	EA	1				*	*	*		3		P202
PAHZZ	5935-577-8776	UP121M (81349) CONNECTOR, PLUG, ELECTRICAL P205 USED IN. ALX-1,2,3,4 AND ALY-5,6,7	EA	2				*	*	*		3		P205
PAHZZ	5935-577-8776	U621EU (80058) CONNECTOR, PLUG, ELECTRICAL P206 USED IN. CONTINUED	EA	REF				*	*	*				P206

SECTION II.

TM 11-6625-297-40P

(1) SAR CODE	(2) FEDERAL STOCK NUMBER	(3) DESCRIPTION REFERENCE NUMBER & MFR. CODE USABLE ON CODE	(4) UNIT OF MEAS	(5) QTY INC IN UNIT	(6) 30-DAY QS MAINT ALLOWANCE			(7) 90-DAY QS MAINT ALLOWANCE			(8) LYR ALY PER 100 EQUIP CATEGY	(9) DEPOf MAINT ALY PER 100 EQUIP	(10) ILLUSTRATION	
					(a)	(b)	(c)	(a)	(b)	(c)			(a)	(b)
					1-30	31-90	91-100	1-30	31-90	91-100			FIGURE NO.	ITEM NO.
PAHZZ	5935-404-7808	CONTINUED ALX-1,2,3,4 AND ALY-5,6,7 US21EU (80058) CONNECTOR, RECEPTACLE, ELECTRICAL P101....	EA	1				*	*	*	3		P101	
PAHZZ	5935-201-3561	USED IN ALX-1 76132-83P88 (79900) CONNECTOR, RECEPTACLE, ELECTRICAL ALX J102..	EA	1				*	*	*	3	5-1	J102	
PAHZZ	5935-189-2962	USED IN ALX-1,2,3,4 UR (7,83) CONNECTOR, RECEPTACLE, ELECTRICAL ALX J102....	EA	1				*	*	*	3	5-1	J102	
PAHZZ	5935-539-2650	USED IN ALY-5,6,7 AN3102A1056-3P (80044) CONNECTOR, RECEPTACLE, ELECTRICAL NO-REF..	EA	1				*	*	*	3			
PAHZZ	5935-149-3232	DESIG USED IN ALY-7 AN3106A10SL3S (80044) CONNECTOR, RECEPTACLE, ELECTRICAL ALY X110....	EA	1				*	*	*	3	7-8	X110	
PAHZZ	5950-221-0301	USED IN ALX-1 AN3102A18-4S (80044) CORE, ADJUSTABLE TUNING ALX E101E USED IN...	EA	1				*	*	*	3	7-8		
PAHZZ	5950-498-0129	ALX-1,2,4 7817733P1 (79900) CORE, ATTENUATOR ALX E101D USED IN ALX-1,2...	EA	1				*	*	*	3	7-8		
PAHZZ	6625-219-6225	4 A2864 (96256) CORE, CRYSTAL HOLDER ALX E101D USED IN ALX-...	EA	1				*	*	*	3	7-8		
PAOZZ	6625-404-8291	3 A9-3008 (72598) COUPLING, ADAPTER US-144/AP ALX E204 CHOKE-...	EA	1				*	*	*	3	5-8	E204	
PAHZZ	6625-288-5117	TO-CHOKE ADAPTER USED IN ALX-1,2,3,4 AND ALY-5,6,7 UG144AP (80058) COUPLING SHAFT, RIGID 0119 USED IN ALX-...	EA	1				*	*	*	3		0119	
XBDZZ		2 SN2193 (80249) COUPLING SHAFT, RIGID NO-REF-DESIG.....	EA	1										
PAOZZ	5985-537-5732	COUPLES ROTARY SWITCH TO EXTENSION SHAFT USED IN ALY-6 A865 (91820) DIRECTIONAL COUPLER ALY Z101 USED IN ALX-1,...	EA	1				*	*	*	3		Z101	
PAHZZ	5960-107-7605	2,3,4 AND ALY-5,6,7 CG-176/AP CG176AP (80058) ELECTRON TUBE V115 USED IN ALX-1,2,3,4...	EA	1				*	*	*	100	5-1	V115	
PAOZZ	5960-114-4849	AND ALY-5,6,7 2K25 (81349) ELECTRON TUBE V110 USED IN ALX-1,2,3,4...	EA	1				*	*	*	100	5-1	V110	
PAOZZ	5960-262-1703	AND ALY-5,6,7 2K2A (81349) ELECTRON TUBE V111 USED IN ALX-1,2,3,4...	EA	1				*	*	*	100	5-1	V111	
PAOZZ	5960-188-3945	AND ALY-5,6 5R4MGA (81349) ELECTRON TUBE V111 USED IN ALY-7	EA	1				*	*	*	100	5-1	V111	
		5R4GY (81349) ALY												

SECTION II.

TM 11-6625-297-40P

(1) SNP CODE	(2) FEDERAL STOCK NUMBER	(3) DESCRIPTION REFERENCE NUMBER & MFR. CODE USABLE ON CODE		(4) UNIT OF MEAS	(5) QTY INC IN UNIT	(6) 30-DAY BS MAINT ALLOWANCE			(7) 30-DAY GS MAINT ALLOWANCE			(8) 1-YR ALW PER 100 EQUIP CMTGCTY	(9) DEPOT MAINT ALW PER 100 EQUIP	(10) ILLUSTRATION	
						(a)	(b)	(c)	(a)	(b)	(c)			(a)	(b)
						1-20	21-50	51-100	1-20	21-50	51-100			FIGURE NO.	ITEM NO.
PAHZZ	5960-170-4575	ELECTRON TUBE AND ALY-5,6,7 3BP1A (81349)	V105 USED IN ALX-1,2,3,4.	EA	1				*	*	*		100	5-28	V105
PAOZZ	5960-166-7666	ELECTRON TUBE AND ALY-5,6,7 6ACTW (81349)	V104 USED IN ALX-1,2,3,4.	EA	1				*	*	*		100	5-1	V104
PAHZZ	5960-166-7656	ELECTRON TUBE AND ALY-5,6,7 6SATT (81349)	V102 USED IN ALX-1,2,3,4.	EA	1				*	*	*		100	5-1	V102
PAOZZ	5960-100-5268	ELECTRON TUBE AND ALY-5,6,7 6SJ7Y (81349)	V101 USED IN ALX-1,2,3,4.	EA	3				*	*	*		100	5-1	V101
PAOZZ	5960-100-5268	ELECTRON TUBE AND ALY-5,6,7 6SJ7Y (81349)	V106 USED IN ALX-1,2,3,4.	EA	REF				*	*	*			5-1	V106
PAOZZ	5960-100-5268	ELECTRON TUBE AND ALY-5,6,7 6SJ7Y (81349)	V113 USED IN ALX-1,2,3,4.	EA	REF				*	*	*			5-1	V113
PAOZZ	5960-188-3577	ELECTRON TUBE AND ALY-5,6,7 6SN7MGT (81349)	V103 USED IN ALX-1,2,3,4.	EA	3				*	*	*		100	5-1	V103
PAOZZ	5960-188-3577	ELECTRON TUBE AND ALY-5,6,7 6SN7MGT (81349)	V108 USED IN ALX-1,2,3,4.	EA	REF				*	*	*			5-1	V108
PAOZZ	5960-188-3577	ELECTRON TUBE AND ALY-5,6,7 6SN7MGT (81349)	V109 USED IN ALX-1,2,3,4.	EA	REF				*	*	*			5-1	V109
PAOZZ	5960-617-6097	ELECTRON TUBE AND ALY-5,6,7 6Y6ST (81349)	V112 USED IN ALX-1,2,3,4.	EA	1				*	*	*		100	5-1	V112
PAOZZ	5960-108-0257	ELECTRON TUBE AND ALY-5,6,7 804 (81349)	V107 USED IN ALX-1,2,3,4.	EA	1				*	*	*		100	5-1	V107
PAOZZ	5960-188-3600	ELECTRON TUBE AND ALY-5,6,7 991 (81349)	V114 USED IN ALX-1,2,3,4.	EA	4				*	*	*		100	5-1	V114
PAOZZ	5960-188-3600	ELECTRON TUBE AND ALY-5,6,7 991 (81349)	V116 USED IN ALX-1,2,3,4.	EA	REF				*	*	*			5-1	V116
PAOZZ	5960-188-3600	ELECTRON TUBE AND ALY-5,6,7 991 (81349)	V117 USED IN ALX-1,2,3,4.	EA	REF				*	*	*			5-1	V117
PAOZZ	5960-188-3600	ELECTRON TUBE AND ALY-5,6,7 991 (81349)	V118 USED IN ALX-1,2,3,4.	EA	REF				*	*	*			5-1	V118
PAOZZ	5325-290-4925	FASTENER NO-REF-DESIG ALY-7	USED IN ALX-1 AND	EA	2							3			
PAOZZ	5920-855-4260	FUSE,CARTRIDGE F101A F02D2R00B (81349)	USED ALY-7	EA	1				*	*	*		50	7-8	
PAOZZ	5920-474-6125	FUSE,CARTRIDGE F101A 4 AND ALY-5 F02G2R00A (81349)	USED IN ALX-1,2,3,	EA	1				*	*	*		50	7-8	

SECTION II.

TM 11-6625-297-40P

(1) SMR CODE	(2) FEDERAL STOCK NUMBER	(3) DESCRIPTION REFERENCE NUMBER & MFR. CODE	(4) UNIT OF MEAS	(5) QTY INC IN UNIT	(6) 30-DAY GS MAINT ALLOWANCE			(7) 90-DAY GS MAINT ALLOWANCE			(8) 1-YR ALY PER 100 EQUIP CHTGCTY	(9) DEPCT MAINT ALY PER 100 EQUIP	(10) ILLUSTRATION	
					(a)	(b)	(c)	(a)	(b)	(c)			(a)	(b)
					1-20	21-50	51-100	1-20	21-50	51-100			FIGURE NO.	ITEM NO.
PAZZ	5920-280-4960	FUSE,CARTRIDGE F101A 2AMP USED IN ALY-7	EA	1				*	*	*		50	7-8	
PAZZ	5920-285-0755	3AG2 (71400) FUSE HOLDER XF101A USED IN ALX-1,2,3,4- AND ALY-5,6	EA	2				*	*	*		3		
PAZZ	5920-285-0755	SCB136552 (80063) FUSE HOLDER XF102B USED IN ALX-1,2,3,4- AND ALY-5,6	EA	REF				*	*	*				
PAZZ	5920-280-3144	SCB136552 (80063) FUSE HOLDER XF101 USED IN ALY-7	EA	2				*	*	*		3		
PAZZ	5920-280-3144	MKP (71400) FUSE HOLDER XF102 USED IN ALY-7	EA	REF				*	*	*				
PAZZ	6625-498-0311	MKP (71400) GASKET O117 USED ALX-1,3	EA	1				*	*	*		5	O117	
PAZZ	5330-498-0312	6A1064 (80249) GASKET O101 USED IN ALX-1,2	EA	1				*	*	*		5	O101	
PAZZ	5325-291-9366	771337 (70485) GROMMET,RUBBER E116 USED IN ALX-1,2	EA	1				*	*	*		4	E116	
PAZZ	5325-291-9366	7614131P19PTS282* 498 (01401) GROMMET,RUBBER E116 USED IN ALX-3	EA	1				*	*	*		4	E116	
PAZZ	5325-292-9833	AN931-6-1C (80044) GROMMET,RUBBER E116 USED IN ALX-4	EA	1				*	*	*		4	E116	
PAZZ	5325-292-9832	2341 (70485) GROMMET,RUBBER NO-REF-DESIG USED IN ALX-4	EA	1				*	*	*		4		
PAZZ	5325-263-6642	7034F (00194) GROMMET,RUBBER E118A USED IN ALX-1	EA	2				*	*	*		4		
PAZZ	5325-263-6642	7614131P17 (79500) GROMMET,RUBBER E118B USED IN ALX-1	EA	REF				*	*	*				
PAZZ	5325-174-5317	7614131P17 (79500) GROMMET,RUBBER E118A USED IN ALX-2,3,4- AND ALY-6,7	EA	2				*	*	*		4		
PAZZ	5325-174-5317	2286 (70485) GROMMET,RUBBER E118B USED IN ALX-2,3,4- AND ALY-6,7	EA	REF				*	*	*				
PAZZ	5325-141-7216	2286 (70485) GROMMET,RUBBER E119A USED IN ALX-1,2,3,4 AND ALY-6	EA	3				*	*	*		4		
PAZZ	5325-141-7216	230 (70485) GROMMET,RUBBER E119B USED IN ALX-1,2,3,4 AND ALY-6	EA	REF				*	*	*				
PAZZ	5325-141-7216	230 (70485) GROMMET,RUBBER E119C USED IN ALX-1,2,3,4 AND ALY-6	EA	REF				*	*	*				
PAZZ	5325-171-7617	230 (70485) GROMMET,RUBBER NO-REF-DESIG USED IN ALY-7	EA	3				*	*	*		4		
PAZZ	5325-185-0017	AN931A47 (80044) GROMMET,RUBBER NO-REF-DESIG USED IN ALY-7	EA	1				*	*	*		4		
		AN931A3-5 (80044) ALY												

SECTION II.

TM 11-6625-297-40P

(1) SMR CODE	(2) FEDERAL STOCK NUMBER	(3) DESCRIPTION REFERENCE NUMBER & MFR. CODE : USABLE ON CODE	(4) UNIT OF MEAS	(5) QTY INC IN UNIT	(6) 30-DAY GS MANT ALLOWANCE			(7) 30-DAY GS MANT ALLOWANCE			(8) 1-YR ALX PER 100 EQUIP CHNGCY	(9) EQUIP MANT ALX PER 100 EQUIP	(10) ILLUSTRATION	
					(a)	(b)	(c)	(a)	(b)	(c)			(a)	(b)
					1-20	21-50	51-100	1-20	21-50	51-100			FIGURE NO.	ITEM NO.
PAHZZ	5340-724-3547	HINGE H145 USED IN ALX-2 A14142 (80249) ALX	EA	4				*	*	*		3		H145
PAHZZ	6625-240-3751	HOLDER, QUARTZ CRYSTAL E108 USED IN ALX- 2,4 A14143 (80249) ALX	EA	1				*	*	*		3		E108
PAHZZ	5970-351-6109	INSULATOR, BUSHING E124 USED IN ALX-2,3 IN1053-2 (80249) ALX	EA	12				*	*	*		3		E124
PAHZZ	5970-519-8150	INSULATOR, BUSHING E124 USED IN ALY-5 .. I3584 (16004) ALY	EA	12				*	*	*		3		E124
PAHZZ	5970-548-3071	INSULATOR STANDOFF E117 USED IN ALX-1.. 2,4	EA	1				*	*	*		3		E117
PAHZZ	5970-285-0077	INSULATOR, STANDOFF E117 USED IN ALX-3 . NS4W0106 (81350) ALX	EA	1				*	*	*		3		E117
PAHZZ	5970-117-5197	INSULATOR, STANDOFF E117 USED IN ALY-5.. A13-3004-1 (72598) ALX	EA	1				*	*	*		3		E117
PAHZZ	5970-175-2736	INSULATOR, STANDOFF E122 USED IN ALX-1.. NS5AW0104 (81350) ALY 2,4 AND ACL-5,6	EA	1				*	*	*		3		E122
PAHZZ	5970-285-0076	INSULATOR, STANDOFF E122 USED IN ALX-3 . NS4W0106 (81350) ALX	EA	1				*	*	*		3		E122
PAHZZ	5970-539-6354	INSULATOR, STANDOFF NO-REF-DESIG USED IN ALY-5 A13-3004-2 (72598) ALX	EA	1				*	*	*		3		
PAHZZ	5935-192-4789	JACK, TELEPHONE J101 USED IN ALX-1,2,3,4 AND ALY-5,6 B0165-05170-2 (ZZZZZ) ALY	EA	1				*	*	*		3	5-2	J101
PAHZZ	5935-192-4869	JACK, TELEPHONE J101 USED IN ALY-7 JJC89 (81349) ALY A2A (37942)	EA	1				*	*	*		3	5-2	J101
PAOZZ	5355-160-6132	KNOB E115A USED IN ALX-1,2,3 SCB85149 (80063) ALX	EA	8				*	*	*		3		
PAOZZ	5355-160-6132	KNOB E115B USED IN ALX-1,2,3 SCB85149 (80063) ALX	EA	REF				*	*	*				
PAOZZ	5355-160-6132	KNOB E115C USED IN ALX-1,2,3 SCB85149 (80063) ALX	EA	REF				*	*	*				
PAOZZ	5355-160-6132	KNOB E115D USED IN ALX-1,2,3 SCB85149 (80063) ALX	EA	REF				*	*	*				
PAOZZ	5355-160-6132	KNOB E115E USED IN ALX-1,2,3 SCB85149 (80063) ALX	EA	REF				*	*	*				
PAOZZ	5355-160-6132	KNOB E115F USED IN ALX-1,2,3 SCB85149 (80063) ALX	EA	REF				*	*	*				
PAOZZ	5355-160-6132	KNOB E115G USED IN ALX-1,2,3 SCB85149 (80063) ALX	EA	REF				*	*	*				
PAOZZ	5355-160-6132	KNOB E115H USED IN ALX-1,2,3 SCB85149 (80063) ALX	EA	REF				*	*	*				
PAOZZ	5355-160-6133	KNOB E115A 2-1/2 IN OD X 1/2 IN THK ... 0.315 IN. DIAM BUSHING USED IN ALX-4 QD0139 (92058) ALX	EA	8				*	*	*		3		
PAOZZ	5355-160-6133	KNOB E115B 2-1/2 IN OD X 1/2 IN THK ... 0.315 IN. DIAM BUSHING USED IN ALX-4 QD0139 (92058) ALX	EA	REF				*	*	*				

SECTION II.

TM 11-6625-297-40P

(1) SMR CODE	(2) FEDERAL STOCK NUMBER	(3) DESCRIPTION REFERENCE NUMBER & MFR. CODE USABLE ON CODE		(4) UNIT CF MEAS	(5) QTY INC IN UNIT	(6) 30-DAY DS MAINT ALLOWANCE			(7) 30-DAY GS MAINT ALLOWANCE			(8) 1-YR ALW PER 100 EQUIP CHTGCY	(9) DEPOT MAINT ALW PER 100 EQUIP	(10) ILLUSTRATION		
						(a)	(b)	(c)	(a)	(b)	(c)			(a)	(b)	
						1-20	21-50	51-100	1-20	21-50	51-100			FIGURE NO.	ITEM NO	
PAOZZ	5355-160-6133	KNOB E115C 2-1/2 IN OD X 1/2 IN THK ... 0.315 IN. DIAM BUSHING USED IN ALX-4 QD0139 (92058)	ALX	EA	REF				*	*	*					
PAOZZ	5355-160-6133	KNOB E115D 2-1/2 IN OD X 1/2 IN THK ... 0.315 IN. DIAM BUSHING USED IN ALX-4 QD0139 (92058)	ALX	EA	REF				*	*	*					
PAOZZ	5355-160-6133	KNOB E115E 2-1/2 IN OD X 1/2 IN THK ... 0.315 IN. DIAM BUSHING USED IN ALX-4 QD0139 (92058)	ALX	EA	REF				*	*	*					
PAOZZ	5355-160-6133	KNOB E115F 2-1/2 IN OD X 1/2 IN THK ... 0.315 IN. DIAM BUSHING USED IN ALX-4 QD0139 (92058)	ALX	EA	REF				*	*	*					
PAOZZ	5355-160-6133	KNOB E115G 2-1/2 IN OD X 1/2 IN THK ... 0.315 IN. DIAM BUSHING USED IN ALX-4 QD0139 (92058)	ALX	EA	REF				*	*	*					
PAOZZ	5355-160-6133	KNOB E115H 2-1/2 IN OD X 1/2 IN THK ... 0.315 IN. DIAM BUSHING USED IN ALX-4 QD0139 (92058)	ALX	EA	REF				*	*	*					
PAOZZ	5355-568-9377	KNOB E115A 1-1/16 IN. DIA X 5/8 IN THK ACCOM 1/4 IN DIA SHAFT USED IN ALY-5 F479A368B (72548)	ALY	EA	9				*	*	*		3			
PAOZZ	5355-568-9377	KNOB E115B 1-1/16 IN. DIA X 5/8 IN THK ACCOM 1/4 IN DIA SHAFT USED IN ALY-5 F479A368B (72548)	ALY	EA	REF				*	*	*					
PAOZZ	5355-568-9377	KNOB E115C 1-1/16 IN. DIA X 5/8 IN THK ACCOM 1/4 IN DIA SHAFT USED IN ALY-5 F479A368B (72548)	ALY	EA	REF				*	*	*					
PAOZZ	5355-568-9377	KNOB E115D 1-1/16 IN. DIA X 5/8 IN THK ACCOM 1/4 IN DIA SHAFT USED IN ALY-5 F479A368B (72548)	ALY	EA	REF				*	*	*					
PAOZZ	5355-568-9377	KNOB E115E 1-1/16 IN. DIA X 5/8 IN THK ACCOM 1/4 IN DIA SHAFT USED IN ALY-5 F479A368B (72548)	ALY	EA	REF				*	*	*					
PAOZZ	5355-568-9377	KNOB E115F 1-1/16 IN. DIA X 5/8 IN THK ACCOM 1/4 IN DIA SHAFT USED IN ALY-5 F479A368B (72548)	ALY	EA	REF				*	*	*					
PAOZZ	5355-568-9377	KNOB E115G 1-1/16 IN. DIA X 5/8 IN THK ACCOM 1/4 IN DIA SHAFT USED IN ALY-5 F479A368B (72548)	ALY	EA	REF				*	*	*					
PAOZZ	5355-568-9377	KNOB E115H 1-1/16 IN. DIA X 5/8 IN THK ACCOM 1/4 IN DIA SHAFT USED IN ALY-5 F479A368B (72548)	ALY	EA	REF				*	*	*					
PAOZZ	5355-680-1175	KNOB E115A 1-1/4 IN X 3/8 IN ACCOM 1/4 IN SHAFT USED IN ALY-6 A885-2 (51820)	ALY	EA	9				*	*	*		3			
PAOZZ	5355-680-1175	KNOB E115B 1-1/4 IN X 3/8 IN ACCOM 1/4 IN SHAFT USED IN ALY-6 A885-2 (51820)	ALY	EA	REF				*	*	*					
PAOZZ	5355-680-1175	KNOB E115C 1-1/4 IN X 3/8 IN ACCOM 1/4 IN SHAFT USED IN ALY-6 A885-2 (51820)	ALY	EA	REF				*	*	*					
PAOZZ	5355-680-1175	KNOB E115D 1-1/4 IN X 3/8 IN ACCOM 1/4 IN SHAFT USED IN ALY-6 A885-2 (51820)	ALY	EA	REF				*	*	*					

SECTION II.

TM 11-6625-297-40P

(1) SMR CODE	(2) FEDERAL STOCK NUMBER	(3) DESCRIPTION REFERENCE NUMBER & MFR. CODE USABLE ON CODE	(4) UNIT OF MEAS	(5) QTY INC IN UNIT	(6) 30-DAY DS MAINT ALLOWANCE			(7) 30-DAY ES MAINT ALLOWANCE			(8) 1-YR ALY PER 100 EQUIP CNTCTY	(9) DEPOT MAINT ALY PER 100 EQUIP	(10) ILLUSTRATION	
					(a)	(b)	(c)	(a)	(b)	(c)			(c)	(b)
					1-20	21-30	51-100	1-20	21-30	51-100			FIGURE NO.	ITEM NO.
PAOZZ	5355-680-1175	CONTINUED IN SHAFT USED IN ALX-6 A885-2 (51820) ALY KNOB E115E 1-1/4 IN X 3/8 IN ACCOM 1/4	EA	REF				*	*	*				
PAOZZ	5355-680-1175	IN SHAFT USED IN ALY-6 A885-2 (51820) ALY KNOB E115F 1-1/4 IN X 3/8 IN ACCOM 1/4	EA	REF				*	*	*				
PAOZZ	5355-680-1175	IN SHAFT USED IN ALY-6 A885-2 (51820) ALY KNOB E115C 1-1/4 IN X 3/8 IN ACCOM 1/4	EA	REF				*	*	*				
PAOZZ	5355-680-1175	IN SHAFT USED IN ALY-6 A885-2 (51820) ALY KNOB E115M 1-1/4 IN X 3/8 IN ACCOM 1/4	EA	REF				*	*	*				
PAOZZ	5355-680-1175	IN SHAFT USED IN ALY-6 A885-2 (51820) ALY KNOB E115I 1-1/4 IN X 3/8 IN ACCOM 1/4	EA	REF				*	*	*				
PAOZZ	5355-033-7797	A885-2 (91820) ALY KNOB E115A BAR SHAPE USED IN ALY-7 ...	EA	9				*	*	*	3			
PAOZZ	5355-033-7797	190A00286 (06053) ALY KNOB E115B BAR SHAPE USED IN ALY-7 ...	EA	REF				*	*	*				
PAOZZ	5355-033-7797	190A00286 (06053) ALY KNOB E115C BAR SHAPE USED IN ALY-7 ...	EA	REF				*	*	*				
PAOZZ	5355-033-7797	190A00286 (06053) ALY KNOB E115D BAR SHAPE USED IN ALY-7 ...	EA	REF				*	*	*				
PAOZZ	5355-033-7797	190A00286 (06053) ALY KNOB E115E BAR SHAPE USED IN ALY-7 ...	EA	REF				*	*	*				
PAOZZ	5355-033-7797	190A00286 (06053) ALY KNOB E115F BAR SHAPE USED IN ALY-7 ...	EA	REF				*	*	*				
PAOZZ	5355-033-7797	190A00286 (06053) ALY KNOB E115G BAR SHAPE USED IN ALY-7 ...	EA	REF				*	*	*				
PAOZZ	5355-033-7797	190A00286 (06053) ALY KNOB E115H BAR SHAPE USED IN ALY-7 ...	EA	REF				*	*	*				
PAOZZ	5355-033-7797	190A00286 (06053) ALY KNOB E115I BAR SHAPE USED IN ALY-7 ...	EA	REF				*	*	*				
PAOZZ	5355-160-5967	190A00286 (06053) ALY KNOB E120 RD BLK NO MARKINGS 1-5/8..	EA	1				*	*	*	3		E120	
PAOZZ	5355-644-1264	IN. DIA, 3/4 IN THK ACCOM 1/4 IN. SHAFT USED IN ALX-1 6465 (80375) ALX KNOB E120 RD BLK NO MARKINGS 1-5/8..	EA	1				*	*	*	3		E120	
PAOZZ	5355-668-6246	IN. DIA, 3/4 IN THK ACCOM 1/4 IN SHAFT USED IN ALX-2,4 AND ALY-5,6 509-6488 (75376) KNOB E120 RD BLK 1-5/8 IN DIA, 3/4...	EA	1				*	*	*	3		E120	
PAOZZ	5355-160-7134	IN. THK ACCOM 3/4 IN SHAFT USED IN ALX-3 A13-3010 (72598) ALX KNOB E121 RD BLK NO MARKINGS 1-1/16..	EA	1				*	*	*	3		E121	
PAOZZ	5355-667-9205	IN. DIA, 5/8 IN. THK ACCOM 1/4 IN. SHAFT USED IN ALX-1,2 M7415805 (79500) ALX KNOB E121 USED IN ALX-3	EA	1				*	*	*	3		E121	
		G13-3005-1 (72598) ALX												

SECTION II.

TM 11-6625-297-40P

(1) SMR CODE	(2) FEDERAL STOCK NUMBER	(3) DESCRIPTION REFERENCE NUMBER & MFR. CODE USABLE ON CODE	(4) UNIT OF MEAS	(5) QTY INC IN UNIT	(6) 30-DAY DS MAINT ALLOWANCE			(7) 30-DAY GS MAINT ALLOWANCE			(8) 1-YR ALW PER 100 EQUIP CNTGCT	(9) DEPOT MAINT ALW PER 100 EQUIP	(10) ILLUSTRATION	
					(a)	(b)	(c)	(a)	(b)	(c)			(a)	(b)
					1-20	21-50	51-100	1-20	21-50	51-100			FIGURE NO.	ITEM NO.
PAOZZ	5355-668-9427	KNOB E121 W/POINTER USED IN ALX-3 B35-3025 (725981) ALX	EA	1				*	*	*		3		E121
PAOZZ	5355-546-3795	KNOB E121 W/POINTER USED IN ALY-5 F236-3LBB (72548) ALY	EA	1				*	*	*		3		E121
PAOZZ	5355-668-7008	KNOB E121A RD BLK NO MARKINGS 1-1/16 DIA 5/8 IN THK ACCOM 1/4 IN SHAFT USED IN ALX-4 13589 (44161) ALX	EA	1				*	*	*		3		
PAOZZ	5355-052-0363	KNOB NO-REF-DESIG ROUND USED IN ALY-7 190A00283 (06053) ALY	EA	2				*	*	*		3		
PAHZZ	6250-159-0995	LAMP HOLDER I101B USED IN ALX-1,2,3,4.. AND ALY-5,6 1539 (83330)	EA	2				*	*	*		5	7-8	
PAHZZ	6250-159-0995	LAMP HOLDER I102B USED IN ALX-1,2,3,4.. AND ALY-5,6 1539 (83330)	EA	REF				*	*	*			7-8	
PAHZZ	6250-054-0351	LAMP HOLDER XI101 MIN BAYONET TYPE USED IN ALY-7 190A00287 (06053) ALY	EA	2				*	*	*		5		
PAHZZ	6250-054-0351	LAMP HOLDER XI102 MIN BAYONET TYPE USED IN ALY-7 190A00287 (06053) ALY	EA	REF				*	*	*				
PAOZZ	6240-057-2887	LAMP, INCANDESCENT I101A USED IN ALX-1, 2,3,4 AND ALY-5,6,7 4 (80063)	EA	2				*	*	*		50	7-8	
PAOZZ	6240-057-2887	LAMP, INCANDESCENT I102A USED RN ALX-1, 2,3,4 AND ALY-5,6,7 4 (80063)	EA	REF				*	*	*				
PAHZZ	5340-322-5799	LATCH,FASTENER H129 USED IN ALX-2,3 ... LT1007-2 (80249) ALX	EA	2				*	*	*		3		H129
PAHZZ	6625-536-9259	METER,ELECTRICAL FREQUENCY E101 USED IN ALX-1,2,3,4 7613282P57 (79500) ALX	EA	1				*	*	*		3	5-1	E101
PAOZZ	5985-241-6701	PICK-UP ANTENNA AT-68/UP E201 ANTENNA.. HORN AT-68/UP USED IN ALX-1,2,3,4 AND ALX-5,6,7 AT68UP (56232)	EA	1				*	*	*		3	2-9	E201
PAHZZ	5315-537-8486	PIN, STRAIGHT H109 HOLDS DUST COVER TO.. CARRIAGE USED IN ALX-1,2 7814217P1 (79500) ALX	EA	2				*	*	*		2		H109
PAHZZ	5935-192-4760	PLUG,TELEPHONE P203 USED IN ALX-1,2,3,4 AND ALY-5,6,7 PJ055B (81349)	EA	2				*	*	*		5		P203
PAHZZ	5935-192-4760	PLUG,TELEPHONE P204 USED IN ALX-1,2,3,4 AND ALY-5,6,7 PJ055B (81349)	EA	REF				*	*	*				P204
PAHZZ	5355-668-9438	POINTER,DIAL E121B USED IN ALX-4	EA	1				*	*	*		3		
PADZZ	6625-033-7798	PROBE,DIRECTIONAL COUPLER NO-REF-DESIG.. DIRECTIONAL COUPLER USED IN ALY-7 190A00354 (06053) ALY	EA	1								3		
PAHZZ	5950-645-3566	REACTOR L104 USED IN ALX-1,2 6.5 H ... CONTINUED	EA	2				*	*	*		2	5-1	L104

SECTION II.

TM 11-6625-297-40P

(1) SMR CODE	(2) FEDERAL STOCK NUMBER	(3) DESCRIPTION REFERENCE NUMBER & MFR. CODE USABLE ON COL.	(4) UNIT OF MEAS	(5) QTY INC IN UNIT	(6) 30-DAY DS MAINT ALLOWANCE			(7) 30-DAY GS MAINT ALLOWANCE			(8) 1-YR ALW PER 100 EQUIP CNTGCT	(9) DEPOT MAINT ALW PER 100 EQUIP	(10) ILLUSTRATION	
					(a)	(b)	(c)	(a)	(b)	(c)			(a)	(b)
					1-20	21-50	51-100	1-20	21-50	51-100			FIGURE NO.	ITEM NO.
		CONTINUED												
PAHZZ	5950-645-3566	AT68UP (56237) L423178 (79500) ALX REACTOR L106 USED IN ALX-1,2 6.5 H ...	EA	REF				*	*	*		5-1	L106	
PAHZZ	5950-650-4931	L423178 (79500) ALX REACTOR L104/L106 POWER SUPPLY FILTERS, COMBINED IN ONE MTG USED IN ALX-3 AND ALY-6	EA	1				*	*	*	2	5-1		
PAHZZ	5950-510-1702	B1404 (91820) REACTOR L104 6.5 H .065. MA USED IN..	EA	2				*	*	*	2	5-2	L104	
PAHZZ	5950-510-1702	ALX-4 S331 (80368) REACTOR L106 6.5 H .065. MA USED IN..	EA	REF				*	*	*		5-2	L106	
PAHZZ	5950-057-3166	ALX-4 S331 (80368) REACTOR L104/L106 USED IN ALY-7	EA	1				*	*	*	2	5-1		
PAHZZ	5905-252-2995	190800330 (06053) ALY RESISTOR, FIXED, COMPOSITION R137 22 OHM. PORM10PCT 1/2W USED IN ALX-1,2,3,4 AND ALX-5,6,7	EA	1				*	*	*	3	5-3	R137	
PAHZZ	5905-279-3517	RC20GF220K (81349) RESISTOR, FIXED, COMPOSITION R132 51 OHMS PORM5PCT 1/2W USED IN ALX-1,2,3,4 AND ALY-5,6,7	EA	1				*	*	*	3	7-22	R132	
PAHZZ	5905-190-8889	RC20GF510J (81349) RESISTOR, FIXED, COMPOSITION R126 100 OHM PORM5PCT 1/2W USED IN ALX-1,2,3,4 AND ALY-5,6,7	EA	2				*	*	*	3	7-22	R126	
PAHZZ	5905-190-8889	RC20GF101J (81349) RESISTOR, FIXED, COMPOSITION R136 100 OHM PORM5PCT 1/2W USED IN ALX-1,2,3,4 AND ALY-5,6,7	EA	REF				*	*	*		7-22	R136	
PAHZZ	5905-195-6806	RC20GF101J (81349) RESISTOR, FIXED, COMPOSITION R154 1000... OHM PORM5PCT 1/2W USED IN ALX-1,2,3,4 AND ALY-5,6,7	EA	3				*	*	*	3	7-22	R154	
PAHZZ	5905-195-6806	RC20GF102J (81349) RESISTOR, FIXED, COMPOSITION R194 1000... OHM PORM5PCT 1/2W USED IN ALX-1,2,3,4 AND ALY-5,6,7	EA	REF				*	*	*		7-22	R194	
PAHZZ	5905-195-6806	RC20GF102J (81349) RESISTOR, FIXED, COMPOSITION R177 1000... OHM PORM5PCT 1/2W USED IN ALX-1,2,3,4 AND ALY-5,6,7	EA	REF				*	*	*		7-22	R177	
PAHZZ	5905-279-1880	RC20GF102J (81349) RESISTOR, FIXED, COMPOSITION R131 2700... OHM PORM5PCT 1/2W USED IN ALX-2,3,4 AND ALY-5,7	EA	1				*	*	*	3	7-22	R131	
PAHZZ	5905-195-6502	RC20GF272J (81349) RESISTOR, FIXED, COMPOSITION R131 3300... OHM PORM10PCT 1/2W USED IN ALX-1 ALX RC20GF332K (81349)	EA	1				*	*	*	3	7-22	R131	

SECTION II.

TM 11-6625-297-40P

(1) SMR CODE	(2) FEDERAL STOCK NUMBER	(3) DESCRIPTION REFERENCE NUMBER & MFR. CODE USABLE ON CODE	(4) UNIT OF MEAS	(5) QTY INC IN UNIT	(6) 30-DAY GS MAINT ALLOWANCE			(7) 30-DAY GS MAINT ALLOWANCE			(8) 1-YR ALY PER 100 EQUIP CNTGCT	(9) DEPOT MAINT ALY PER 100 EQUIP	(10) ILLUSTRATION	
					(a)	(b)	(c)	(a)	(b)	(c)			(a)	(b)
					1-20	21-50	51-100	1-20	21-50	51-100			FIGURE NO.	ITEM NO.
PAHZZ	5905-190-8876	RESISTOR, FIXED, COMPOSITION R158 15000.. OHM PORM5PCT 1/2W USED IN ALX-1,2,3,4 AND ALY-5,6,7 RC20GF153K (81349)	EA	2				*	*	*		3	7-22	R158
PAHZZ	5905-190-8876	RESISTOR, FIXED, COMPOSITION R171 15000.. OHM PORM5PCT 1/2W USED IN ALX-1,2,3,4 AND ALY-5,6,7 RC20GF153K (81349)	EA	REF				*	*	*			5-3	R171
PAHZZ	5905-192-0649	RESISTOR, FIXED, COMPOSITION R173A 20000.. OHM PORM5PCT 1/2W USED IN ALX-3 RC20GF203J (81349)	EA	2				*	*	*		3	7-22	
PAHZZ	5905-192-0649	RESISTOR, FIXED, COMPOSITION R173B 20000.. OHM PORM5PCT 1/2W USED IN ALX-3 RC20GF203J (81349)	EA	REF				*	*	*			7-22	
PAHZZ	5905-171-2004	RESISTOR, FIXED, COMPOSITION R105 22000.. OHM PORM 5PCT 1/2W USED IN ALX-1,2,3,4 AND ALY-5,6,7 RC20GF223J (81349)	EA	8				*	*	*		3	7-8	R105
PAHZZ	5905-171-2004	RESISTOR, FIXED, COMPOSITION R110 22000.. OHM PORM5PCT 1/2W USED IN ALX-1,2,3,4 AND ALY-5,6,7 RC20GF223J (81349)	EA	REF				*	*	*			7-22	R110
PAHZZ	5905-171-2004	RESISTOR, FIXED, COMPOSITION R129 22000.. OHM PORM5PCT 1/2W USED IN ALX-1,2,3,4 AND ALY-5,6,7 RC20GF223J (81349)	EA	REF				*	*	*			7-22	R129
PAHZZ	5905-171-2004	RESISTOR, FIXED, COMPOSITION R130 22000.. OHM PORM5PCT 1/2W USED IN ALX-1,2,3,4 AND ALY-5,6,7 RC20GF223J (81349)	EA	REF				*	*	*			7-22	R130
PAHZZ	5905-171-2004	RESISTOR, FIXED, COMPOSITION R143 22000.. OHM PORM5PCT 1/2W USED IN ALX-1,2,3,4 AND ALY-5,6,7 RC20GF223J (81349)	EA	REF				*	*	*			7-22	R143
PAHZZ	5905-171-2004	RESISTOR, FIXED, COMPOSITION R145 22000.. OHM PORM5PCT 1/2W USED IN ALX-1,2,3,4 AND ALY-5,6,7 RC20GF223J (81349)	EA	REF				*	*	*			7-22	R145
PAHZZ	5905-171-2004	RESISTOR, FIXED, COMPOSITION R183 22000.. OHM PORM5PCT 1/2W USED IN ALX-1,2,3,4 AND ALY-5,6,7 RC20GF223J (81349)	EA	REF				*	*	*			7-22	R183
PAHZZ	5905-171-2004	RESISTOR, FIXED, COMPOSITION R185 22000.. OHM PORM5PCT 1/2W USED IN ALX-1,2,3,J AND ALY-5,6,7 RC20GF223J (81349)	EA	REF				*	*	*			5-3	R185
PAHZZ	5905-171-1998	RESISTOR, FIXED, COMPOSITION R123 33000.. OHM PORM5PCT 1/2W USED IN ALX-1,2,3,4 AND ALY-5,6,7 RC20GF223J (81349)	EA	5				*	*	*		3	7-22	R123
PAHZZ	5905-171-1998	RESISTOR, FIXED, COMPOSITION R162 33000.. OHM PORM5PCT 1/2W USED IN ALX-1,2,3,4 CONTINUED	EA	REF				*	*	*			7-22	R162

SECTION II.

TM 11-6625-297-40P

(1) SMR CODE	(2) FEDERAL STOCK NUMBER	(3) DESCRIPTION REFERENCE NUMBER & MFR. CODE USABLE ON CODE		(4) UNIT OF MEAS	(5) QTY INC IN UNIT	(6) 30-DAY EST MAINT ALLOWANCE			(7) 30-DAY EST MAINT ALLOWANCE			(8) 1-YR ALW PER 100 EQUIP CNTGCT	(9) DEPOT MAINT ALW PER 100 EQUIP	(10) ILLUSTRATION		
						(a)	(b)	(c)	(a)	(b)	(c)			(a)	(b)	
						1-20	21-50	51-100	1-20	21-50	51-100			FIGURE NO.	ITEM NO.	
		CONTINUED														
PAHZZ	5905-171-1998	AND ALY-5,6,7 RC20GF333J (81349) RESISTOR, FIXED, COMPOSITION R181 33000.. OHM PORN5PCT 1/2W USED IN ALX-1,2,3,4		EA	REF				*	*	*			7-22	R181	
PAHZZ	5905-171-1998	AND ALY-5,6,7 RC20GF333J (81349) RESISTOR, FIXED, COMPOSITION R192 33000.. OHM PORN5PCT 1/2W USED IN ALX-1,2,3,4		EA	REF				*	*	*			7-22	R192	
PAHZZ	5905-171-1998	AND ALY-5,6,7 RC20GF333J (81349) RESISTOR, FIXED, COMPOSITION R138 33000.. OHM PORN5PCT 1/2W USED IN ALX-1,2,3,4		EA	REF				*	*	*			5-3	R138	
PAHZZ	5905-295-3410	AND ALY-5,6,7 RC20GF333J (81349) RESISTOR, FIXED, COMPOSITION R114 47000.. OHM PORN10PCT 1/2W USED IN ALX-1,2,3,4		EA	13				*	*	*	3		7-22	R114	
PAHZZ	5905-295-3410	AND ALY-5,6,7 RC20GF473K (81349) RESISTOR, FIXED, COMPOSITION R116 47000.. OHM PORN10PCT 1/2W USED IN ALX-1,2,3,4		EA	REF				*	*	*			7-22	R116	
PAHZZ	5905-295-3410	AND ALY-5,6,7 RC20GF473K (81349) RESISTOR, FIXED, COMPOSITION R118 47000.. OHM PORN10PCT 1/2W USED IN ALX-1,2,3,4		EA	REF				*	*	*			7-22	R118	
PAHZZ	5905-295-3410	AND ALY-5,6,7 RC20GF473K (81349) RESISTOR, FIXED, COMPOSITION R142 47000.. OHM PORN10PCT 1/2W USED IN ALX-1,2,3,4		EA	REF				*	*	*			7-22	R142	
PAHZZ	5905-295-3410	AND ALY-5,6,7 RC20GF473K (81349) RESISTOR, FIXED, COMPOSITION R147 47000.. OHM PORN10PCT 1/2W USED IN ALX-1,2,3,4		EA	REF				*	*	*			7-22	R147	
PAHZZ	5905-295-3410	AND ALY-5,6,7 RC20GF473K (81349) RESISTOR, FIXED, COMPOSITION R159 47000.. OHM PORN10PCT 1/2W USED IN ALX-1,2,3,4		EA	REF				*	*	*			7-22	R159	
PAHZZ	5905-295-3410	AND ALY-5,6,7 RC20GF473K (81349) RESISTOR, FIXED, COMPOSITION R160 47000... OHM PORN10PCT 1/2W USED IN ALX-1,2,3,4		EA	REF				*	*	*			7-22	R160	
PAHZZ	5905-295-3410	AND ALY-5,6,7 RC20GF473K (81349) RESISTOR, FIXED, COMPOSITION R166 47000.. OHM PORN10PCT 1/2W USED IN ALX-1,2,3,4		EA	REF				*	*	*			7-22	R166	
PAHZZ	5905-295-3410	AND ALY-5,6,7 RC20GF473K (81349) RESISTOR, FIXED, COMPOSITION R168 47000.. OHM PORN10PCT 1/2W USED IN ALX-1,2,3,4		EA	REF				*	*	*			7-8	R168	
PAHZZ	5905-295-3410	AND ALY-5,6,7 RC20GF473K (81349) RESISTOR, FIXED, COMPOSITION R172 47000... OHM PORN10PCT 1/2W USED IN ALX-1,2,3,4		EA	REF				*	*	*			5-1	R172	
		CONTINUED														

SECTION II.

TM 11-6625-297-40P

(1) SMR CODE	(2) FEDERAL STOCK NUMBER	(3) DESCRIPTION REFERENCE NUMBER & MFR. CODE USABLE ON CODE	(4) UNIT OF MEAS	(5) QTY INC IN UNIT	(6) 30-DAY DS MAINT ALLOWANCE			(7) 30-DAY GS MAINT ALLOWANCE			(8) 1-YR ALW PER 100 EQUIP CONTCY	(9) DEPOT MAINT ALW PER 100 EQUIP	(10) ILLUSTRATION	
					(a)	(b)	(c)	(a)	(b)	(c)			(a)	(b)
					1-20	21-30	31-100	1-20	21-30	31-100			FIGURE NO.	ITEM NO.
PAHZZ	5905-279-3496	CONTINUED OHM PORN10PCT 1/2W USED IN ALX-1,2,3,4 AND ALY-5,6,7 RC20GF473K (81349) RESISTOR, FIXE COMPOSITION R170 51000..	EA	1				*	*	*		3	5-3	R170
PAHZZ	5905-171-1986	OHM PORN5PCT 1/2W USED IN ALX-1,2,3,4 AND ALY-5,6,7 RC20GF73J (81349) RESISTOR, FIXED, COMPOSITION R121 56000..	EA	1				*	*	*		3	7-22	R121
PAHZZ	5905-195-6761	OHM PORN5PCT 1/2W USED IN ALX-1,2,3,4 AND ALY-5,6,7 RC20GF563J (81349) RESISTOR, FIXED, COMPOSITION R101 100000..	EA	9				*	*	*		3	7-22	R101
PAHZZ	5905-195-6761	OHM PORN5PCT 1/2W USED IN ALX-1,2,3,4 AND ALY-5,6,7 RC20GF104J (81349) RESISTOR, FIXED, COMPOSITION R122 100000..	EA	REF				*	*	*			7-22	R122
PAHZZ	5905-195-6761	OHM PORN5PCT 1/2W USED IN ALX-1,2,3,4 AND ALY-5,6,7 RC20GF104J (81349) RESISTOR, FIXED, COMPOSITION R125 100000..	EA	REF				*	*	*			7-22	R125
PAHZZ	5905-195-6761	OHM PORN5PCT 1/2W USED IN ALX-1,2,3,4 AND ALY-5,6,7 RC20GF104J (81349) RESISTOR, FIXED, COMPOSITION R141 100000..	EA	REF				*	*	*			7-22	R141
PAHZZ	5905-195-6761	OHM PORN5PCT 1/2W USED IN ALX-1,2,3,4 AND ALY-5,6,7 RC20GF104J (81349) RESISTOR, FIXED, COMPOSITION R164 100000..	EA	REF				*	*	*			7-22	R164
PAHZZ	5905-195-6761	OHM PORN5PCT 1/2W USED IN ALX-1,2,3,4 AND ALY-5,6,7 RC20GF104J (81349) RESISTOR, FIXED, COMPOSITION R139 100000..	EA	REF				*	*	*			5-3	R139
PAHZZ	5905-195-6761	OHM PORN5PCT 1/2W USED IN ALX-1,2,3,4 AND ALY-5,6,7 RC20GF104J (81349) RESISTOR, FIXED, COMPOSITION R146 100000..	EA	REF				*	*	*			5-3	R146
PAHZZ	5905-195-6761	OHM PORN5PCT 1/2W USED IN ALX-1,2,3,4 AND ALY-5,6,7 RC20GF104J (81349) RESISTOR, FIXED, COMPOSITION R148 100000..	EA	REF				*	*	*			7-22	R148
PAHZZ	5905-195-6761	OHM PORN5PCT 1/2W USED IN ALX-1,2,3,4 AND ALY-5,6,7 RC20GF104J (81349) RESISTOR, FIXED, COMPOSITION R156 100000..	EA	REF				*	*	*			5-3	R156
PAHZZ	5905-192-9260	OHM PORN10PCT 1/2W USED IN ALX-1,2,3,4 AND ALY-5,6 RC20GF104J (81349) RESISTOR, FIXED, COMPOSITION R111 150000..	EA	3				*	*	*		3	5-2	R111

SECTION II.

TM 11-6625-297-40P

(1) SAR CODE	(2) FEDERAL STOCK NUMBER	(3) DESCRIPTION REFERENCE NUMBER & MFR. CODE USABLE ON CODE	(4) UNIT OF MEAS	(5) QTY INC IN UNIT	(6) 30-DAY DS MAINT ALLOWANCE			(7) 30-DAY GS MAINT ALLOWANCE			(8) 1-YR ALW PER 100 EQUIP CHNGCY	(9) DEPOT MAINT ALW PER 100 EQUIP	FIGURE NO.	PART NO.
					(a)	(b)	(c)	(a)	(b)	(c)				
					1-20	21-30	31-100	1-20	21-30	31-100				
PAHZZ	5905-192-9260	RESISTOR, FIXED, COMPOSITION R152 150000. OHM PORN10PCT 1/2W USED IN ALX-1,2,3,4 AND ALY-5,6 RC20GF154K (81349)	EA	REF				*	*	*			7-22	R152
PAHZZ	5905-192-9260	RESISTOR, FIXED, COMPOSITION R180 150000. OHM PORN10PCT 1/2W USED IN ALX-1,2,3,4 AND ALY-5,6 RC20GF154K (81349)	EA	REF				*	*	*			7-22	R180
PAHZZ	5905-0192-0667	RESISTOR, FIXED, COMPOSITION R134 220000. OHM PORN5PCT 1/2W USED IN ALX-2,3,4 AND ALY-5,6 RC20GF224J (81349)	EA	1				*	*	*		3	5-3	R134
PAHZZ	5905-295-3409	RESISTOR, FIXED, COMPOSITION R104 220000. OHM PORN10PCT 1/2W USED IN ALX-1,2,3,4 AND ALY-5,6,7 RC20GF224K (81349)	EA	2				*	*	*		3	7-22	R104
PAHZZ	5905-295-3409	RESISTOR, FIXED, COMPOSITION R124 220000. OHM PORN10PCT 1/2W USED IN ALX-1,2,3,4 AND ALY-5,6,7 RC20GF224K (81349)	EA	REF				*	*	*			7-22	R124
PAHZZ	5905-279-2519	RESISTOR, FIXED, COMPOSITION R134 330000. OHM PORN5PCT 1/2W USED IN ALX-1 AND ALY- 7 RC20GF334J (81349)	EA	1				*	*	*		3	5-3	R134
PAHZZ	5905-221-5860	RESISTOR, FIXED, COMPOSITION R112 330000. OHM PORN10PCT 1/2W USED IN ALX-1,2,3,4 AND ALY-5,6,7 RC20GF334K (81349)	EA	2				*	*	*		3	7-22	R112
PAHZZ	5905-221-5860	RESISTOR, FIXED, COMPOSITION R176 330000. OHM PORN10PCT 1/2W USED IN ALX-1,2,3,4 AND ALY-5,6,7 RC20GF334K (81349)	EA	REF				*	*	*			7-22	R176
PAHZZ	5905-279-2518	RESISTOR, FIXED, COMPOSITION R169 430000. OHM PORN5PCT 1/2W USED IN ALX-1,2,3,4 AND ALY-5,6,7 RC20GF434J (81349)	EA	1				*	*	*		3	5-3	R169
PAHZZ	5905-279-2515	RESISTOR, FIXED, COMPOSITION R155 470000. OHM PORN5PCT 1/2W USED IN ALX-1,2,3,4 AND ALY-5,6,7 RC20GF474J (81349)	EA	2				*	*	*		3	7-22	R155
PAHZZ	5905-279-2515	RESISTOR, FIXED, COMPOSITION R161 470000. OHM PORN5PCT 1/2W USED IN ALX-1,2,3,4 AND ALY-5,6,7 RC20GF474J (81349)	EA	REF				*	*	*			7-22	R161
PAHZZ	5905-192-3982	RESISTOR, FIXED, COMPOSITION R119 1..... MEG OHM PORN10PCT 1/2W USED IN ALX-1,2,3, 4 AND ALY-5,6,7 RC20GF105K (81349)	EA	5				*	*	*		3	5-1	R119
PAHZZ	5905-192-3982	RESISTOR, FIXED, COMPOSITION R128 1..... MEG OHM PORN10PCT 1/2W USED IN ALX-1,2,3, 4 AND ALY-5,6,7 RC20GF105K (81349)	EA	REF				*	*	*			7-22	R128

SECTION II.

TM 11-6625-297-40P

(1) SMR CODE	(2) FEDERAL STOCK NUMBER	(3) DESCRIPTION REFERENCE NUMBER & MFR. CODE USABLE ON CODE	(4) UNIT OF MEAS	(5) QTY INC IN UNIT	(6) 30-DAY DS MAINT ALLOWANCE			(7) 30-DAY GS MAINT ALLOWANCE			(8) 1-YR ALY PER 100 EQUIP CNTGCT	(9) DEPOT MAINT ALY PER 100 EQUIP	(10) ILLUSTRATION	
					(a)	(b)	(c)	(a)	(b)	(c)			(a)	(b)
					1-20	21-50	51-100	1-20	21-50	51-100			FIGURE NO.	ITEM NO.
PAHZZ	5905-192-3982	RESISTOR, FIXED, COMPOSITION R178 1..... MEG OHM PORMIOPCT 1/2W USED IN ALX-1,2,3, 4 AND ALY-5,6,7 RC20GF105K (81349)	EA	REF				*	*	*			7-22	R178
PAHZZ	5905-192-3982	RESISTOR, FIXED, COMPOSITION R179 1 MEG OHM PORMIOPCT 1/2W USED IN ALX-1,2,3,4 AND ALY-5,6,7 RC20GF105K (81349)	EA	REF				*	*	*			7-22	R179
PAHZZ	5905-192-3982	RESISTOR, FIXED, COMPOSITION R184 1..... MEG OHM PORMIOPCT 1/2W USED IN ALX-1,2,3, 4 AND ALY-5,6,7 RC20GF105K (81349)	EA	REF				*	*	*			7-8	R184
PAHZZ	5905-185-6920	RESISTOR, FIXED, COMPOSITION R190 1.5.... MEG OHM PORMIOPCT 1/2W USED IN ALX-1,2,3, 4 AND ALY-5,6,7 RC20GF155K (81349)	EA	2				*	*	*		3	7-22	R190
PAHZZ	5905-185-6920	RESISTOR, FIXED, COMPOSITION R191 1.5.... MEG OHM PORMIOPCT 1/2W USED IN ALX-1,2,3, 4 AND ALY-5,6,7 RC20GF155K (81349)	EA	REF				*	*	*			7-22	R191
PAHZZ	5905-295-3403	RESISTOR, FIXED, COMPOSITION R149 2.2.... MEG OHM PORMIOPCT 1/2W USED IN ALX-1,2,3, 4 AND ALY-5,6,7 RC20GF225K (81349)	EA	1				*	*	*		3	7-22	R149
PAHZZ	5905-473-5251	RESISTOR, FIXED, COMPOSITION R108 1000... OHM PORMIOPCT 1W USED IN ALX-1 RC32GF102J (81349)	EA	2				*	*	*		3	7-22	R108
PAHZZ	5905-473-5251	RESISTOR, FIXED, COMPOSITION R109 1000... OHM PORMIOPCT 1W USED IN ALX-1 RC32GF102J (81349)	EA	REF				*	*	*			7-22	R109
PAHZZ	5905-279-1722	RESISTOR, FIXED, COMPOSITION R195 1000... OHM PORMIOPCT 1W USED IN ALX-1,2,3,4 AND ALY-5,6,7 RC32GF102K (81349)	EA	1				*	*	*		3	7-22	R195
PAHZZ	5905-279-2641	RESISTOR, FIXED, COMPOSITION R108 1100... OHM PORMIOPCT 1W USED IN ALX-2,3,4 AND ALY-5,6,7 RC32GF112J (81349)	EA	2				*	*	*		3	7-22	R108
PAHZZ	5905-279-2641	RESISTOR, FIXED, COMPOSITION R109 1100... OHM PORMIOPCT 1W USED IN ALX-2,3,4 AND ALY-5,6,7 RC32GF112J (81349)	EA	REF				*	*	*		*	7-22	R109
PAHZZ	5905-299-2034	RESISTOR, FIXED, COMPOSITION R106 7500... OHM PORMIOPCT 1W USED IN ALX-1,2,3,4 AND ALY-5,6,7 RC32GF752J (81349)	EA	2				*	*	*		3	7-22	R106
PAHZZ	5905-299-2034	RESISTOR, FIXED, COMPOSITION R107 7500... OHM PORMIOPCT 1W USED IN ALX-1,2,3,4 AND ALY-5,6,7 RC32GF752J (81349)	EA	REF				*	*	*			7-22	R107
PAHZZ	5905-279-1719	RESISTOR, FIXED, COMPOSITION R102 10000... OHM PORMIOPCT 1W USED IN ALX-2,3,4 AND CONTINUED	EA	3				*	*	*		3	7-22	R102

SECTION II.

TM 11-6625-297-40P

(1) SMR CODE	(2) FEDERAL STOCK NUMBER	(3) DESCRIPTION REFERENCE NUMBER & MFR. CODE USABLE ON CODE	(4) UNIT OF MEAS	(5) QTY INC IN UNIT	(6) 30-DAY DS MAINT ALLOWANCE			(7) 30-DAY GS MAINT ALLOWANCE			(8) 1-YR ALW PER 100 EQUIP CNTGCTY	(9) DEPOT MAINT ALW PER 100 EQUIP	(10) ILLUSTRATION	
					(a)	(b)	(c)	(a)	(b)	(c)			(a)	(b)
					1-20	21-50	51-100	1-20	21-50	51-100			FIGURE NO.	ITEM NO.
		CONTINUED												
PAHZZ	5905-279-1719	ALY-5,6,7 RC32GF103J (81349) RESISTOR, FIXED, COMPOSITION R103 10000.. OHM PORM10PCT 1W USED IN ALX-2,3,4 AND ALY-5,6,7	EA	REF				*	*	*			7-22	R103
PAHZZ	5905-279-1719	ALY-5,6,7 RC32GF103J (81349) RESISTOR, FIXED, COMPOSITION R196 10000.. OHM PORM10PCT 1W USED IN ALX-2,3,4 AND ALY-5,6,7	EA	REF				*	*	*			7-22	R196
PAHZZ	5905-299-2025	ALY-5,6,7 RC32GF103J (81349) RESISTOR, FIXED, COMPOSITION R102 15000.. OHM PORM10PCT 1W USED IN ALX-1	EA	2				*	*	*		3	7-22	R102
PAHZZ	5905-299-2025	ALY-5,6,7 RC32GF153K (81349) RESISTOR, FIXED, COMPOSITION R103 15000.. OHM PORM10PCT 1W USED IN ALX-1	EA	REF				*	*	*			7-22	R103
PAHZZ	5905-299-2004	ALY-5,6,7 RC32GF153K (81349) RESISTOR, FIXED, COMPOSITION R150 100000.. OHM PORM10PCT 1W USED IN ALX-1,2,3,4 AND ALY-5,6,7	EA	3				*	*	*		3	7-22	R150
PAHZZ	5905-299-2004	ALY-5,6,7 RC32GF104K (81349) RESISTOR, FIXED, COMPOSITION R151 100000.. OHM PORM10PCT 1W USED IN ALX-1,2,3,4 AND ALY-5,6,7	EA	REF				*	*	*			7-22	R151
PAHZZ	5905-299-2004	ALY-5,6,7 RC32GF104K (81349) RESISTOR, FIXED, COMPOSITION R157 100000.. OHM PORM10PCT 1W USED IN ALX-1,2,3,4 AND ALY-5,6,7	EA	REF				*	*	*			7-22	R157
PAHZZ	5905-279-1717	ALY-5,6,7 RC32GF104K (81349) RESISTOR, FIXED, COMPOSITION R188 150000.. OHM PORM10PCT 2W USED IN ALX-1,2,3,4 AND ALY-5,6,7	EA	2				*	*	*		3	7-22	R188
PAHZZ	5905-279-1717	ALY-5,6 RC32GF154K (81349) RESISTOR, FIXED, COMPOSITION R189 150000.. OHM PORM10PCT 2W USED IN ALX-1,2,3,4 AND ALY-5,6	EA	REF				*	*	*			5-1	R189
PAHZZ	5905-279-1717	ALY-5,6 RC32GF154K (81349) RESISTOR, FIXED, COMPOSITION R111 150000.. OHM PORM10PCT 2W USED IN ALY-7	EA	5				*	*	*		3	5-2	R111
PAHZZ	5905-279-1717	ALY RC32GF154K (81349) RESISTOR, FIXED, COMPOSITION R152 150000.. OHM PORM10PCT 2W USED IN ALY-7	EA	REF				*	*	*			7-22	R152
PAHZZ	5905-279-1717	ALY RC32GF154K (81349) RESISTOR, FIXED, COMPOSITION R180 150000.. OHM PORM10PCT 2W USED IN ALY-7	EA	REF				*	*	*			7-22	R180
PAHZZ	5905-279-1717	ALY RC32GF154K (81349) RESISTOR, FIXED, COMPOSITION R188 150000.. OHM PORM10PCT 2W USED IN ALY-7	EA	REF				*	*	*		*	7-22	R188
PAHZZ	5905-279-1717	ALY RC32GF154K (81349) RESISTOR, FIXED, COMPOSITION R189 150000.. OHM PORM10PCT 2W USED IN ALY-7	EA	REF				*	*	*			5-1	R189
		ALY RC32GF154K (81349)												

SECTION II.

TM 11-6625-297-40P

(1) SMR CODE	(2) FEDERAL STOCK NUMBER	(3) DESCRIPTION REFERENCE NUMBER & MFR. CODE USABLE ON CODE	(4) UNIT OF MEAS	(5) QTY INC IN UNIT	(6) 30-DAY DS MAINT ALLOWANCE			(7) 30-DAY ES MAINT ALLOWANCE			(8) 1-YR ALW PER 100 EQUIP CHTGCY	(9) DEPOT MAINT ALW PER 100 EQUIP	(10) ILLUSTRATION	
					(a)	(b)	(c)	(a)	(b)	(c)			(a)	(b)
					1-20	21-50	51-100	1-20	21-50	51-100			FIGURE NO.	ITEM NO.
PAHZZ	5905-185-8521	RESISTOR, FIXED, COMPOSITION R173 10000.. OHM PORM10PCT 2W USED IN ALX-1 RC42GF103K (81349) ALX	EA	1				*	*	*		3	5-1	R173
PAHZZ	5905-192-0649	RESISTOR, FIXED, COMPOSITION R173A 20000.. OHM PORM5PCT 2W USED IN ALX-2,4 AND ALY- 5,6,7 RC42GF203J (81349)	EA	2				*	*	*		3	7-22	
PAHZZ	5905-192-0649	RESISTOR, FIXED, COMPOSITION R173B 20000.. OHM PORM5PCT 2W USED IN ALX-2,4 AND ALY- 5,6,7 RC42GF203J (81349)	EA	REF				*	*	*			7-22	
PAHZZ	5905-192-0450	RESISTOR, FIXED, COMPOSITION R121 56000.. OHM PORM5PCT 2W USED IN ALX-3 AND ALY-5 RC42GF563J (81349)	EA	1				*	*	*		3	7-22	R121
PAHZZ	5905-539-2568	RESISTOR, VARIABLE R133 250 OHM..... PORM10PCT 2W USED IN ALX-1 RV4NATFK251A (81349) ALX	EA	2				*	*	*		3	5-2	R133
PAHZZ	5905-539-2568	RESISTOR, VARIABLE R193 250 OHM..... PORM10PCT 2W USED IN ALX-1 RV4NATFK251A (81349) ALX	EA	REF				*	*	*			5-1	R193
PAHZZ	5905-263-2338	RESISTOR, VARIABLE R133 250 OHM..... PORM10PCT 2W USED IN ALX-2,3,4 RV4ATS251A (81349)	EA	1				*	*	*		3	5-2	R133
PAHZZ	5905-549-9891	RESISTOR, VARIABLE R133 250 OHM..... PORM10PCT 2W USED IN ALY-5 RV4ATS251A (81349) ALY	EA	1				*	*	*		3	5-2	R133
PAHZZ	5905-539-2568	RESISTOR, VARIABLE R133 250 OHM..... PORM10PCT 2W USED IN ALY-6 RV4NAYFK251A (81349) ALY	EA	1				*	*	*		3	5-2	R133
PAHZZ	5905-503-6218	RESISTOR, VARIABLE R133 250 OHM..... PORM10PCT 2W USED IN ALY-7 RV4LAYS251A (81349) ALX	EA	1				*	*	*		3	5-2	R133
PAHZZ	5905-539-5000	RESISTOR, VARIABLE R193 250 OHM..... PORM10PCT 2W USED IN ALX-2,3 AND ALY-5 RV4NATSD251A (81349)	EA	1				*	*	*		3	5-1	R193
PAHZZ	5905-107-3931	RESISTOR, VARIABLE R193 250 OHM..... PORM10PCT 2W USED IN ALX-4 JSV251V3100 (01121) ALX	EA	1				*	*	*		3	5-1	R193
PAHZZ	5905-539-5000	RESISTOR, VARIABLE R193 250 OHM..... PORM10PCT 2W USED IN ALY-6 RV4NAYS251A (81349) ALY	EA	1				*	*	*		3	5-1	R193
PAHZZ	5905-682-1383	RESISTOR, VARIABLE R193 250 OHM..... PORM10PCT 2W USED IN ALY-7 RV4LAYS251A (81349) ALY	EA	1				*	*	*		3	5-1	R193
PAHZZ	5905-263-0578	RESISTOR, VARIABLE R127 5000 OHM..... PORM10PCT 2W USED IN ALX-1 RV4ATRD502A (81349) ALX	EA	1				*	*	*		3	7-22	R127
PAHZZ	5905-643-5626	RESISTOR, VARIABLE R127 5000 OHM..... PORM10PCT 2W USED IN ALX-2,3 AND ALY-5, 7 RV4NATSD502A (81349)	EA	1				*	*	*		3	7-22	R127
PAHZZ	5905-114-3242	RESISTOR, VARIABLE R127 5000 OHM.....	EA	1				*	*	*		3	7-22	R127

CONTINUED

SECTION II.

TM 11-6625-297-40P

(1) SMB CODE	(2) FEDERAL STOCK NUMBER	(3) DESCRIPTION REFERENCE NUMBER & MFR. CODE	(4) UNIT OF MEAS.	(5) QTY INC IN UNIT	(6) 30-DAY QUANTITY ALLOWANCE			(7) 90-DAY QUANTITY ALLOWANCE			(8) YRS AGE PER 100 EQUIP CONTACT	(9) SUPPORT MANTN ALY PER 100 EQUIP	(10) PLNS. ACTION	
					(a) 1-20	(b) 21-50	(c) 51-100	(a) 1-20	(b) 21-50	(c) 51-100			(1) FIGURE NO.	(2) ITEM NO.
		CONTINUED												
PA.LZ	5905-643-5626	PORN10PCT 2W USED IN ALX-4 J2U5021P3C48 (01121) ALX	EA	2				*	*	*		3	7-22	R127
PAHZZ	5905-643-5626	RESISTOR,VARIABLE R127 5000 OHM..... RV4NAYS0502A (81349) ALY	EA	REF				*	*	*			5-2	R197
PAHZZ	5905-646-5979	PORN10PCT 2W USED IN ALY-6 RV4NAYS0502A (81349) ALY	EA	1				*	*	*		3	7-22	R127
PAHZZ	5905-257-7517	RESISTOR,VARIABLE R197 5000 OHM..... RV4NAYFK502A (81349) ALY	EA	1				*	*	*		3	5-2	R197
PAHZZ	5905-723-3921	PORN10PCT 2W USED IN ALX-4 RH221SE902UK (81349) ALY	EA	2				*	*	*		3	5-2	R197
PAHZZ	5905-263-2331	RESISTOR,VARIABLE R163 25000 OHM..... RV4NAYS0502A (81349) ALY	EA	1				*	*	*		3	5-1	R163
PAHZZ	5905-539-1559	PORN20PCT 2W USED IN ALX-1,2 RV4AUFK253B (81349) ALX	EA	1				*	*	*		3	5-1	R163
PAHZZ	5905-233-4261	RESISTOR,VARIABLE R163 25000 OHM..... RV4NAYS0502A (81349) ALY	EA	1				*	*	*		3	5-1	R163
PAHZZ	5905-542-8292	PORN10PCT 2W USED IN ALX-4 J1U2531P3200 (01121) ALY	EA	1				*	*	*		3	5-1	R163
PAHZZ	5905-615-5993	PORN10PCT 2W USED IN ALY-5 1402 (71450) ALY	EA	1				*	*	*		3	5-1	R163
PAHZZ	5905-053-8451	RESISTOR,VARIABLE R163 25000 OHM..... RV4NAYS0502A (81349) ALY	EA	1				*	*	*		3	5-1	R163
PAHZZ	5905-143-7368	PORN10PCT 2W USED IN ALY-7 B1402 (81820) ALY	EA	1				*	*	*		3	7-22	R117
PAHZZ	5905-643-6284	RESISTOR,VARIABLE R117 50000 OHM..... RV4NAYS0503A (81349) ALX	EA	3				*	*	*		3	7-22	R117
PAHZZ	5905-643-6284	PORN10PCT 2W USED IN ALX-1 RV4NAYS0503A (81349) ALX	EA	REF				*	*	*			5-2	R144
PAHZZ	5905-643-6284	RESISTOR,VARIABLE R144 50000 OHM PORM.. RV4NAYS0503A (81349) ALX	EA	REF				*	*	*			5-1	R182
PAHZZ	5905-660-5295	RESISTOR,VARIABLE R182 50000 OHM PORM.. RV4NAYS0503A (81349) ALX	EA	3				*	*	*		3	7-22	R117
PAHZZ	5905-660-5295	PORN10PCT 2W USED IN ALY-5 RV4NAYS0503A (81349) ALX	EA	REF				*	*	*			5-2	R144
		CONTINUED												

SECTION II.

TM 11-6625-297-40P

(1) SMR CODE	(2) FEDERAL STOCK NUMBER	(3) DESCRIPTION REFERENCE NUMBER & MFR. CODE : USABLE ON CODE	(4) UNIT OF MEAS	(5) QTY INC IN UNIT	(6) 30-DAY DS MAINT ALLOWANCE			(7) 30-DAY GS MAINT ALLOWANCE			(8) 1-YR ALW PER 100 EQUIP CNTGCT	(9) DEPOT MAINT ALW PER 100 EQUIP	(10) ILLUSTRATION	
					(a)	(b)	(c)	(a)	(b)	(c)			(a)	(b)
					1-20	21-50	51-100	1-20	21-50	51-100			FIGURE NO.	ITEM NO.
		CONTINUED												
PAHZZ	5905-143-7368	RESISTOR, VARIABLE R117 50000 OHM..... RV4MAXSD503A (81349) ALY	EA	1				*	*	*		3	7-22	R117
PAHZZ	5905-660-5295	RESISTOR, VARIABLE R182 50000 OHM PORM.. SPCT 2W USED IN ALY-5 RV4MAXSD503A (81349) ALY	EA	REF				*	*	*		*	5-1	R182
PAHZZ	5905-107-7990	RESISTOR, VARIABLE R117 50000 OHM PORM.. 10PCT 2W USED IN ALY-6 RV4NAYS0503A (81349) ALY	EA	3				*	*	*		3	7-22	R117
PAHZZ	5905-107-7990	RESISTOR, VARIABLE R144 50000OHM PORM.. 10PCT 2W USED IN ALY-6 RV4NAYS0503A (81349) ALY	EA	REF				*	*	*			5-2	R144
PAHZZ	5905-107-7990	RESISTOR, VARIABLE R182 50000 OHM PORM.. 10PCT 2W USED IN ALY-6 RV4NAYS0503A (81349) ALY	EA	REF				*	*	*			5-1	R182
PAHZZ	5905-643-6284	RESISTOR, VARIABLE R117 50000 OHM PORM.. 10PCT 2W USED IN ALY-7 RV4NAYS0503A (81349) ALY	EA	1				*	*	*		3	7-22	R117
PAHZZ	5905-252-4180	RESISTOR, VARIABLE R144 50000 OHM PORM.. 20PCT 2W USED IN ALX-1,4 RV4NATS0503B (81349) ALY	EA	2				*	*	*		3	5-2	R144
PAHZZ	5905-252-4180	RESISTOR, VARIABLE R182 50000 OHM PORM.. 20PCT 2W USED IN ALX-1,4 RV4NATS0503B (81349) ALY	EA	REF				*	*	*			5-1	R182
PAHZZ	5905-577-2222	RESISTOR, VARIABLE R144 50000 OHM PORM.. 10PCT 2W USED IN ALY-7 RV4LAYS0503A (81349) ALY	EA	2				*	*	*		3	5-2	R144
PAHZZ	5905-577-2222	RESISTOR, VARIABLE R182 50000 OHM PORM.. 10PCT 2W USED IN ALY-7 RV4LAYS0503A (81349) ALY	EA	REF				*	*	*			5-1	R182
PAHZZ	5905-542-8033	RESISTOR, VARIABLE R153 100000 OHM PORM.. 10PCT 2W USED IN ALX-1 RV4NAYFK104B (81349) ALX	EA	2				*	*	*		3	7-22	R153
PAHZZ	5905-542-8033	RESISTOR, VARIABLE R167 100000 OHM PORM.. 10PCT 2W USED IN ALX-1 RV4NAYFK104B (81349) ALX	EA	REF				*	*	*			7-22	R167
PAHZZ	5905-248-3340	RESISTOR, VARIABLE R153 100000 OHM PORM.. 10PCT 2W USED IN ALX-2,3 AND ALY-5 RV4NATSD104A (81349) ALY	EA	2				*	*	*		3	7-22	R153
PAHZZ	5905-248-3340	RESISTOR, VARIABLE R167 100000 OHM PORM.. 10PCT 2W USED IN ALX-2,3 AND ALY-5 RV4NATSD104A (81349) ALY	EA	REF				*	*	*			7-22	R167
PAHZZ	5905-107-9255	RESISTOR, VARIABLE R153 100000 OHM PORM.. 10PCT 2W USED IN ALX-4 JU1041 (01121) ALX	EA	2				*	*	*		3	7-22	R153
PAHZZ	5905-107-9255	RESISTOR, VARIABLE R167 100000 OHM PORM.. 10PCT 2W USED IN ALX-4 JU1041 (01121) ALX	EA	REF				*	*	*			7-22	R167
PAHZZ	5905-539-4576	RESISTOR, VARIABLE R153 100000 OHM PORM.. 10PCT 2W USED IN ALY-6 RV4NAYFK104A (81349) ALY	EA	2				*	*	*		3	7-22	R153
PAHZZ	5905-539-4576	RESISTOR, VARIABLE R167 100000 OHM PORM.. CONTINUED	EA	REF				*	*	*			7-22	R167

SECTION II.

TM 11-6625-297-40P

(1) SAR CODE	(2) FEDERAL STOCK NUMBER	(3) DESCRIPTION REFERENCE NUMBER & MFR. CODE USABLE ON CODE	(4) UNIT OF MEAS	(5) QTY INC IN UNIT	(6) 30-DAY QS MANT ALLOWANCE			(7) 30-DAY QS MANT ALLOWANCE			(8) LVS ALU PER 100 EQUIP CNTGCT	(9) DEPOT MANT ALU PER 100 EQUIP	(10) ILLUSTRATION	
					(a)	(b)	(c)	(a)	(b)	(c)			(e)	(f)
					1-20	21-50	51-100	1-20	21-50	51-100			FIGURE NO.	ITEM NO.
		CONTINUED												
PAHZZ	5905-644-6693	10PCT 2W USED IN ALY-6 RV4WAYFK104A (81349) RESISTOR, VARIABLE R153 100000 OHM PORM. ALY	EA	2				*	*	*		3	7-22	R153
PAHZZ	5905-644-6693	10PCT 2W USED IN ALY-7 RV4WAYS104A (81349) RESISTOR, VARIABLE R167 100000 OHM PORM. ALY	EA	REF				*	*	*			7-22	R167
PAHZZ	5905-539-4578	10PCT 2W USED IN ALY-7 RV4WAYS104A (81349) RESISTOR, VARIABLE R165 250000 OHM PORM. ALY	EA	2				*	*	*		3	5-1	R165
PAHZZ	5905-539-4578	10PCT 2W USED IN ALX-1 RV4WAYFK254A (81349) RESISTOR, VARIABLE R174 250000 OHM PORM. ALX	EA	REF				*	*	*			5-1	R174
PAHZZ	5905-539-4578	10PCT 2W USED IN ALX-1 RV4WAYFK254A (81349) RESISTOR, VARIABLE R165 250000 OHM PORM. ALX	EA	1				*	*	*		3	5-1	R165
PAHZZ	5905-539-4578	10PCT 2W USED IN ALX-3 RV4WAYFK254A (81349) RESISTOR, VARIABLE R165 250000 OHM PORM. ALX	EA	1				*	*	*		3	5-1	R165
PAHZZ	5905-158-5783	10PCT 2W USED IN ALX-2 RV4WAYS254A (81349) RESISTOR, VARIABLE R165 250000 OHM PORM. ALX	EA	1				*	*	*		3	5-1	R165
PAHZZ	5905-542-8221	10PCT 2W USED IN ALX-4 S2446 (71450) RESISTOR, VARIABLE R165 250000 OHM PORM. ALX	EA	1				*	*	*		3	5-1	R165
PAHZZ	5905-644-7825	10PCT 2W USED IN ALY-5 1403 (05535) RESISTOR, VARIABLE R165 250000 OHM PORM. ALY	EA	1				*	*	*		3	5-1	R165
PAHZZ	5905-053-8435	10PCT 2W USED IN ALY-6 B1403 (81820) RESISTOR, VARIABLE R165 250000 OHM PORM. ALY	EA	1				*	*	*		3	5-1	R165
PAHZZ	5905-518-9422	10PCT 2W USED IN ALY-7 B1403-00 (97979) RESISTOR, VARIABLE R174 250000 OHM PORM. ALY	EA	1				*	*	*		3	5-4	R174
PAHZZ	5905-552-5476	10PCT 2W USED IN ALX-2 AND ALY-5 RV4WATS254A (81349) RESISTOR, VARIABLE R174 250000 OHM PORM. ALY	EA	1				*	*	*		3	5-4	R174
PAHZZ	5905-298-3850	10PCT 2W USED IN ALY-6,7 RV4WAYS254A (81349) RESISTOR, VARIABLE R174 250000 OHM PORM. ALY	EA	1				*	*	*		3	5-4	R174
PAHZZ	5905-263-2322	10PCT 2W USED IN ALX-3,4 95-250000 (71450) RESISTOR, VARIABLE R197 500000 OHM PORM. ALX	EA	1				*	*	*		3	5-2	R197
PAHZZ	5905-192-2869	20PCT 2W USED IN ALX-1 RV4AUSA504B (81349) RESISTOR, VARIABLE R140 1MEGOHM PORM.... ALX	EA	1				*	*	*		3	5-4	R140
PAHZZ	5905-542-8019	20PCT 2W USED IN ALX-1 ESO-65747-7 (64959) RESISTOR, VARIABLE R135 1MEGOHM PORM.... ALX	EA	1				*	*	*		3	7-22	R135
PAHZZ	5905-252-6968	10PCT 2W USED IN ALX-1 RV4WAYFK105A (81349) RESISTOR, VARIABLE R140 1MEGOHM PORM.... ALX	EA	1				*	*	*		3	5-4	R140
		CONTINUED												

SECTION II.

TM 11-6625-297-40P

(1) SMR CODE	(2) FEDERAL STOCK NUMBER	(3) DESCRIPTION REFERENCE NUMBER & MFR. CODE USABLE ON CODE	(4) UNIT OF MEAS	(5) QTY INC IN UNIT	(6) 30-DAY GS MAINT ALLOWANCE			(7) 30-DAY GS MAINT ALLOWANCE			(8) 1-YR ALW PER 100 EQUIP CITGCTY	(9) DEPOT MAINT ALW PER 100 EQUIP	(10) ILLUSTRATION	
					(a)	(b)	(c)	(a)	(b)	(c)			(a)	(b)
					1-20	21-50	51-100	1-20	21-50	51-100			FIGURE NO.	ITEM NO.
PAHZZ	5905-552-5476	CONTINUED RESISTOR, VARIABLE R174 250000 OHM PORM. RV4NATSD105A (81349)	EA	1				*	*	*		3	5-4	R174
PAHZZ	5905-552-2254	RESISTOR, VARIABLE R140 1MEGOHM PORM.... 20PCT 2W USED IN ALX-3,4 95-1MEG (02470) ALX	EA	1				*	*	*		3	5-4	R140
PAHZZ	5905-532-2265	RESISTOR, VARIABLE R140 1MEGOHM PORM.... 10PCT 2W USED IN ALY-6 RV4NAYS0105A (81349) ALY	EA	1				*	*	*		3	5-4	R140
PAHZZ	5905-023-7931	RESISTOR, VARIABLE R140 1MEGOHM PORM.... 10PCT 2W USED ALX-7 RV4LAYS0105A (81349) ALY	EA	1				*	*	*		3	5-4	R140
PAHZZ	5905-532-1948	RESISTOR, VARIABLE R135 1.2MEGOHM USED. IN ALX-3,4 95-1-2MEG (71450) ALX	EA	1				*	*	*		3	7-22	R135
PAHZZ	5905-501-7307	RESISTOR, VARIABLE R135 1.2MEG PORM..... 10PCT 2W USED IN ALY-6 B1401 (91820) ALY	EA	1				*	*	*		3	7-22	R135
PAHZZ	5905-053-8432	RESISTOR, VARIABLE R135 1.2MEGOHM PORM.. 10PCT 2W USED IN ALY-7 B1401-00 (97979) ALY	EA	1				*	*	*		3	7-22	R135
PAHZZ	5905-226-9491	RESISTOR, VARIABLE R135 1.5MEGOHM PORM.. 20PCT 2W USED IN ALX-2 RV4ATS155B (81349) ALX	EA	1				*	*	*		3	7-22	R135
PAHZZ	5905-502-8523	RESISTOR, VARIABLE R135 1.5MEGOHM PORM.. 10PCT 2W USED IN ALY-5 RV4NATSD155A (81349) ALY	EA	1				*	*	*		3	7-22	R135
PAOZZ	5960-221-0075	RETAINER, ELECTRON TUBE O108A USED IN... ALX-1	EA	2				*	*	*		3		
PAOZZ	5960-221-0075	T7611463G17PT31 (79500) ALX RETAINER, ELECTRON TUBE O108B USED IN... ALX-1	EA	REF				*	*	*				
PAOZZ	5340-327-8845	T7611463G17PT31 (79500) ALX RETAINER, ELECTRON TUBE O108A USED IN... ALX-2	EA	2				*	*	*		3		
PAOZZ	5340-327-8845	T7611463G17 (79500) ALX RETAINER, ELECTRON TUBE O108B USED IN... ALX-2	EA	REF				*	*	*				
PAOZZ	5960-151-7574	T7611463G17 (79500) ALX RETAINER, ELECTRON TUBE O108A USED IN... ALX-3	EA	2				*	*	*		3		
PAOZZ	5960-151-7574	B33-3002 (72598) ALX RETAINER, ELECTRON TUBE O108B USED IN... ALX-3	EA	REF				*	*	*				
PAOZZ	5960-330-2029	B33-3002 (72598) ALX RETAINER, ELECTRON TUBE H114 USED IN.... ALX-4	EA	1				*	*	*		3		H114
PAOZZ	5960-338-2828	NE13996 (82005) ALX RETAINER, ELECTRON TUBE O108A USED IN... ALX-4	EA	2				*	*	*		3		
PAOZZ	5960-338-2828	CP1052-17 (79213) ALX RETAINER, ELECTRON TUBE O108B USED IN... CONTINUED	EA	REF				*	*	*				

SECTION II.

TM 11-6625-297-40P

(1) SMR CODE	(2) FEDERAL STOCK NUMBER	(3) DESCRIPTION REFERENCE NUMBER & MFR. CODE USABLE ON CODE		(4) UNIT OF MEAS	(5) QTY INC IN UNIT	(6) 30-DAY DS MAINT ALLOWANCE			(7) 30-DAY GS MAINT ALLOWANCE			(8) 1-YR ALW PER 100 EQUIP CNTGCT	(9) DEPOT MAINT ALW PER 100 EQUIP	(10) ILLUSTRATION	
						(a)	(b)	(c)	(a)	(b)	(c)			(a)	(b)
						1-20	21-50	51-100	1-20	21-50	51-100			FIGURE NO.	ITEM NO.
CONTINUED															
PAOZZ	5960-249-4973	ALX-4 CP1053-17 (79213) RETAINER,ELECTRON	0108A	USED IN ALY-5..	EA	2				*	*	*		3	
PAOZZ	5960-249-4973	150F1-23D (91506) RETAINER,ELECTRON	TUBE	0108B	USED IN...	EA	REF			*	*	*			
PAOZZ	5960-658-0599	ALY-5,7 150F1-23D (91506) RETAINER,ELECTRON	0108A	USED IN ALY-6 .	EA	2				*	*	*		3	
PAOZZ	5960-658-0599	13081-21D (91506) RETAINER,ELECTRON	TUBE	0108B	USED IN...	EA	REF			*	*	*			
PAOZZ	5960-503-4409	ALY-6 13081-21D (91506) RETAINER,ELECTRON	TUBE	NO-REF-DESIG.....	EA	2				*	*	*		3	
PAOZZ	5340-475-9499	USED IN ALY-7 15081-23D (91506) RETAINER,ELECTRON	TUBE	0109A	USED IN...	EA	2			*	*	*		3	
PAOZZ	5340-475-9499	ALX-1 7415806P49PTT761* 1463G20 (79500) RETAINER,ELECTRON	TUBE	0109B	USED IN...	EA	REF			*	*	*			
PAOZZ	5960-296-1532	ALX-1 7415806P49PTT761* 1463G20 (79500) RETAINER,ELECTRON	TUBE	0109A	USED IN...	EA	2			*	*	*		3	
PAOZZ	5960-296-1532	ALX-2 T7611463G20 (79500) RETAINER,ELECTRON	TUBE	0109B	USED IN...	EA	REF			*	*	*		*	
PAOZZ	5960-264-3009	ALX-2 T7611463G20 (79500) RETAINER,ELECTRON	TUBE	0109A	USED IN...	EA	2			*	*	*		3	
PAOZZ	5960-264-3009	ALX-3 B33-3001 (72598) RETAINER,ELECTRON	TUBE	0109B	USED IN...	EA	REF			*	*	*			
PAOZZ	5960-338-2830	ALX-3 B33-3001 (72598) RETAINER,ELECTRON	TUBE	0109A	USED IN...	EA	2			*	*	*		3	
PAOZZ	5960-338-2830	ALX-4 CP1053-20 (19213) RETAINER,ELECTRON	TUBE	0109B	USED IN...	EA	REF			*	*	*		*	
PAOZZ	5960-151-7562	ALX-4 CP1053-20 (79213) RETAINER,ELECTRON	0109A	USED IN ALY-5 .	EA	2				*	*	*		3	
PAOZZ	5960-151-7562	15002-23D (91506) RETAINER,ELECTRON	TUBE	0109B	USED IN...	EA	REF			*	*	*			
PAOZZ	5960-658-2892	ALY-5 15002-23D (91506) RETAINER,ELECTRON	TUBE	0109A	USED IN...	EA	2			*	*	*		3	
PAOZZ	5960-658-2892	ALY-6 130F9-61A (91506) RETAINER,ELECTRON	TUBE	0109B	USED IN...	EA	REF			*	*	*			
CONTINUED															

SECTION II.

TM 11-6625-297-40P

(1) SMR CODE	(2) FEDERAL STOCK NUMBER	(3) DESCRIPTION REFERENCE NUMBER & MFR. CODE US. 913E ON CODE		(4) UNIT OF MEAS	(5) QTY INC IN UNIT	(6) 30-DAY DS MAINT ALLOWANCE			(7) 30-DAY GS MAINT ALLOWANCE			(8) 1-YR ALW PER 100 EQUIP CHTGCY	(9) DEPOT MAINT ALW PER 100 EQUIP	(10) ILLUSTRATION		
						(a)	(b)	(c)	(a)	(b)	(c)			(a)	(b)	
						1-20	21-50	51-100	1-20	21-50	51-100			FIGURE NO.	ITEM NO.	
		CONTINUED														
PAOZZ	5960-054-7639	B33-3001 (72598) 130F9-61A (91506)	ALX ALY	EA	1				*	*	*		3			
PAHZZ	9320-674-5838	RETAINER, ELECTRON TUBE NO-REF-DESIG..... USED IN ALY-7 S150P1-169X (91506)	ALY	EA	1				*	*	*		3		0101	
PAHZZ	5305-356-4109	RUBBER STRIP, SOLID 0101 PROTECT CRT... FROM SHOCK 14 IN LG X 1 IN W X 1/4 IN THK USED IN ALY-6 B1454-6 (91820)	ALY	EA	1				*	*	*		5		0105	
PAHZZ	5305-639-4630	SCREW, ADJUSTMENT 0105 F/ATTENUATING.... ADJ USED IN ALX-2 BP1233 (80249)	ALX	EA	14				*	*	*		5		H106	
PAHZZ	5305-206-9397	SCREW, MACHINE H106 USED IN ALX-2 SB268N4 (80249)	ALX	EA	5				*	*	*		5		H106	
PAHZZ	5960-284-6134	SCREW, TAPPING, THREAD FORMING H106 RH .. SLOTTED DRIVE 2-1/8 IN LG O/A USED IN ALX-1 2-1-8 (Z3333)	ALX	EA	1				*	*	*		3	5-1		
PAHZZ	5305-208-0157	SEMI-CONDUCTOR DEVICE, DIODE CR101 USED. IN ALX-1, 2, 3, 4 AND ALY-5, 6, 7 IN23B (81349)	ALX	EA	4				*	*	*		5		H117	
PAHZZ	5305-206-1091	SETScrew H117 #6-32 THD SOCKET DRIVE . 3/8 IN LG USED IN ALX-2 FF591C (81348)	ALX	EA	12				*	*	*		5		H124	
PAHZZ	5305-297-7884	SETScrew H124 USED IN ALX-2 B9011-46T (06650)	ALX	EA	2				*	*	*		5		H125	
PAHZZ	6625-405-1447	SETScrew H125 USED IN ALX-2 SS540C4 (80249)	ALX	EA	1				*	*	*		1		0102	
PAHZZ	6625-351-4791	SHAFT, ADJUSTING 0102 USED IN ALX-1, 2 .. BP1234A (80249)	ALX	EA	1				*	*	*		1		0118	
PAHZZ	6625-405-1448	SHAFT, ADJUSTING 0118 USED IN ALX-2 A4341 (80249)	ALX	EA	1				*	*	*		1		0105	
PAHZZ	5355-156-6559	SHAFT, EXTENSION 0105 USED IN ALX-1 A2847 (96256)	ALX	EA	6				*	*	*		1		H103	
PAHZZ	5355-646-4702	SHAFT LOCK, ELECTRONIC COMPONENT H103.... USED IN ALX-1, 2, 3, 4 K10061 (76489)	ALX	EA	6				*	*	*		1		H103	
PAHZZ	6625-405-1449	SHAFT LOCK, ELECTRONIC COMPONENT H103..... USED IN ALY-5 160A (91605)	ALY	EA	1				*	*	*		1		0107	
PAHZZ	5960-594-2813	SHAFT, TUNING 0107 USED IN ALX-1, 2, 3, 4 . 787811P1 (79500)	ALX	EA	1				*	*	*		10		E107	
PAHZZ	5960-128-8944	SHIELD, ELECTRON TUBE E107 USED IN ALX- 1, 2, 3, 4 AND ALY-5, 6 A3989 (80249)	ALX	EA	1				*	*	*		10		E123	
PAHZZ	5960-547-5312	SHIELD, ELECTRON TUBE E123 USED IN ALX- 2, 3, 4 FP1132A (80249)	ALX	EA	1				*	*	*		10		E123	
		SHIELD, ELECTRON TUBE E123 USED IN ALY- 5, 6 B1413-1 (91820)	ALY						*	*	*					

SECTION II.

TM 11-6625-297-40P

(1) SMR CODE	(2) FEDERAL STOCK NUMBER	(3) DESCRIPTION REFERENCE NUMBER & MFR. CODE USABLE ON CODE		(4) UNIT OF MEAS	(5) QTY INC IN UNIT	(6) 30-DAY GS MAINT ALLOWANCE			(7) 30-DAY GS MAINT ALLOWANCE			(8) 1-YR. ALW PER 100 EQUIP CNTGCT	(9) 99POT MAINT ALW PER 100 EQUIP	(10) ILLUSTRATION	
						(a)	(b)	(c)	(a)	(b)	(c)			(a)	(b)
						1-20	21-50	51-100	1-20	21-50	51-100			FIGURE NO.	ITEM NO.
PAHZZ	5935-161-8699	SOCKET, ELECTRON TUBE XV101	8-PIN OCTAL	EA	8				*	*	*		3		
		USED IN ALX-4 AND ALY-5,6,7 7858T (02660)													
PAHZZ	5935-161-8699	SOCKET, ELECTRON TUBE XV102	8-PIN OCTAL	EA	REF				*	*	*				
		USED IN ALX-4 AND ALY-5,6,7 7858T (02660)													
PAHZZ	5935-161-8699	SOCKET, ELECTRON TUBE XV103	8-PIN OCTAL	EA	REF				*	*	*				
		USED IN ALX-4 AND ALY-5,6,7 7858T (02660)													
PAHZZ	5935-161-8699	SOCKET, ELECTRON TUBE XV104	8-PIN OCTAL	EA	REF				*	*	*				
		USED IN ALX-4 AND ALY-5,6,7 7858T (02660)													
PAHZZ	5935-161-8699	SOCKET, ELECTRON TUBE XV106	8-PIN OCTAL	EA	REF				*	*	*				
		USED IN ALX-4 AND ALY-5,6,7 7858T (02666)													
PAHZZ	5935-161-8699	SOCKET, ELECTRON TUBE XV108	8-PIN OCTAL	EA	REF				*	*	*				
		USED IN ALX-4 AND ALY-5,6,7 7858T (02660)													
PAHZZ	5935-161-8699	SOCKET, ELECTRON TUBE XV109	8-PIN OCTAL	EA	REF				*	*	*				
		USED IN ALX-4 AND ALY-5,6,7 7858T (02660)													
PAHZZ	5935-161-8699	SOCKET, ELECTRON TUBE XV113	8-PIN OCTAL	EA	REF				*	*	*				
		USED IN ALX-4 AND ALY-5,6,7 7858T (02660)													
PAHZZ	5935-161-8699	SOCKET, ELECTRON TUBE XV101	8-PIN OCTAL	EA	9				*	*	*		3	7-21	
		USED IN ALX-2,3 7858T (02660)													
PAHZZ	5935-161-8699	SOCKET, ELECTRON TUBE XV102	8-PIN..... OCTAL USED IN ALX-2,3	EA	REF				*	*	*			7-21	
		7858T (02660)													
PAHZZ	5935-161-8699	SOCKET, ELECTRON TUBE XV103	8-PIN..... OCTAL, USED IN ALX-2,3	EA	REF				*	*	*			7-21	
		7858T (02660)													
PAHZZ	5935-161-8699	SOCKET, ELECTRON TUBE XV104	8-PIN..... OCTAL, USED IN ALX-2,3	EA	REF				*	*	*			7-21	
		7858T (02660)													
PAHZZ	5935-161-8699	SOCKET, ELECTRON TUBE XV105	8-PIN..... OCTAL, USED IN ALX-2,3	EA	REF				*	*	*			7-21	
		7858T (02660)													
PAHZZ	5935-161-8699	SOCKET, ELECTRON TUBE XV106	8-PIN..... OCTAL, USED IN ALX-2,3	EA	REF				*	*	*			7-21	
		7858T (02660)													
PAHZZ	5935-161-8699	SOCKET, ELECTRON TUBE XV107	8-PIN..... OCTAL, USED IN ALX-2,3	EA	REF				*	*	*			7-21	
		7858T (02660)													
PAHZZ	5935-161-8699	SOCKET, ELECTRON TUBE XV108	8-PIN..... OCTAL, USED IN ALX-2,3	EA	REF				*	*	*			7-21	
		7858T (02660)													
PAHZZ	5935-161-8699	SOCKET, ELECTRON TUBE XV109	8-PIN..... OCTAL, USED IN ALX-2,3	EA	REF				*	*	*			7-21	
		7858T (02660)													
PAHZZ	5935-237-6444	SOCKET, ELECTRON TUBE X105	USED IN ALX-2,3	EA	1				*	*	*		3	7-21	X105
		7858T (02660)													

CONTINUED

SECTION II.

TM 11-6625-297-40P

(1) SMR CODE	(2) FEDERAL STOCK NUMBER	(3) DESCRIPTION REFERENCE NUMBER & MFR. CODE USABLE ON CODE		(4) UNIT OF MEAS	(5) QTY INC IN UNIT	(6) 30-DAY DS MAINT ALLOWANCE			(7) 30-DAY GS MAINT ALLOWANCE			(8) 1-YR ALW PER 100 EQUIP CATGCT	(9) DEPOT MAINT ALW PER 100 EQUIP	(10) ILLUSTRATION	
						(a)	(b)	(c)	(a)	(b)	(c)			(a)	(b)
						1-20	21-50	51-100	1-20	21-50	51-100			FIGURE NO.	ITEM NO.
PAHZZ	5935-161-8699	CONTINUED SOCKET, ELECTRON TUBE XV105 8-PIN.....		EA	REF				*	*	*			7-21	
PAHZZ	5935-063-5789	9453-14 (71785) SOCKET, ELECTRON TUBE X107 USED IN ALX-.		EA	1				*	*	*		3	7-21	X107
PAHZZ	5935-229-5617	TS101P01 (81349) SOCKET, ELECTRON TUBE X110 USED IN ALX-.		EA	1				*	*	*		3	7-21	X110
PAHZZ	5935-129-9358	1,2,3,4 AND ALY-5,6 49R534H (02660) SOCKET, ELECTRON TUBE XV111 USED IN ALX-.		EA	2				*	*	*		3	7-21	
PAHZZ	5935-129-9358	2,3,4 TS101P02 (81349) SOCKET, ELECTRON TUBE XV112 USED IN....		EA	REF				*	*	*			7-21	
PAHZZ	5935-129-9358	ALX-2,3,4 TS101P02 (81349) SOCKET, ELECTRON TUBE XV101 USED IN ALX-.		EA	11				*	*	*		3	7-21	
PAHZZ	5935-129-9358	1,3,4 AND ALY-5,6 TS101P02 (81349) SOCKET, ELECTRON TUBE XV102 USED IN....		EA	REF				*	*	*			7-21	
PAHZZ	5935-129-9358	ALX-1,3,4 AND ALY-5,6 TS101P02 (81349) SOCKET, ELECTRON TUBE XV113 USED IN....		EA	REF				*	*	*			7-21	
PAHZZ	5935-129-9358	ALX-1,3,4 AND ALY-5,6 TS101P02 (81349) SOCKET, ELECTRON TUBE XV103 USED IN....		EA	REF				*	*	*			7-21	
PAHZZ	5935-129-9358	ALX-1,3,4 AND ALY-5,6 TS101P02 (81349) SOCKET, ELECTRON TUBE XV104 USED IN....		EA	REF				*	*	*			7-21	
PAHZZ	5935-129-9358	ALX-1,3,4 AND ALY-5,6 TS101P02 (81349) SOCKET, ELECTRON TUBE XV106 USED IN....		EA	REF				*	*	*			7-21	
PAHZZ	5935-129-9358	ALX-1,3,4 AND ALY-5,6 TS101P02 (81349) SOCKET, ELECTRON TUBE XV107 USED IN....		EA	REF				*	*	*			7-21	
PAHZZ	5935-129-9358	ALX-1,3,4, AND ALY-5,6 TS101P02 (81349) SOCKET, ELECTRON TUBE XV108 USED IN....		EA	REF				*	*	*			7-21	
PAHZZ	5935-129-9358	ALX-1,3,4, AND ALY-5,6 TS101P02 (81349) SOCKET, ELECTRON TUBE XV109 USED IN....		EA	REF				*	*	*			7-21	
PAHZZ	5935-129-9358	ALX-1,3,4 AND ALY-5,6 TS101P02 (81349) SOCKET, ELECTRON TUBE XV111 USED IN....		EA	REF				*	*	*			7-21	
PAHZZ	5935-129-9358	ALX-1,3,4 AND ALY-5,6 TS101P02 (81349) SOCKET, ELECTRON TUBE XV112 USED IN....		EA	REF				*	*	*			7-21	
PAHZZ	5935-129-9358	ALX-1,3,4 AND ALY-5,6 TS101P02 (81349) SOCKET, ELECTRON TUBE XV107 USED IN ALY-		EA	3				*	*	*		3	7-21	
PAHZZ	5935-129-9358	7 TS101P02 (81349) SOCKET, ELECTRON TUBE XV111 USED IN....		EA	REF				*	*	*			7-21	
		CONTINUED													

SECTION II.

TM 11-6625-297-40P

(1) SMR CODE	(2) FEDERAL STOCK NUMBER	(3) DESCRIPTION REFERENCE NUMBER & MFR. CODE USABLE ON CODE		(4) UNIT OF MEAS	(5) QTY INC IN UNIT	(6) 30-DAY GS MAINT ALLOWANCE			(7) 30-DAY GS MAINT ALLOWANCE			(8) 1-YR ALW PER 100 EQUIP CHGNCY	(9) DEPOT MAINT ALW PER 100 EQUIP	(10) ILLUSTRATION		
						(a)	(b)	(c)	(a)	(b)	(c)			(a)	(b)	
						1-30	21-30	51-100	1-30	21-30	51-100			FIGURE NO.	ITEM NO.	
		CONTINUED														
PAHZZ	5935-129-9358	ALY-7 TS101P02 (81349)	ALY SOCKET, ELECTRON TUBE XV112 USED IN....	EA	REF				*	*	*			7-21		
PAHZZ	5935-257-9694	ALY-7 TS101P02 (81349)	ALY SOCKET, ELECTRON TUBE X111 USED IN ALY-.	EA	2				*	*	*		3	7-21	X111	
PAHZZ	5935-257-9694	5,6 78R587N (02660)	ALY SOCKET, ELECTRON TUBE X112 USED IN ALY-.	EA	REF				*	*	*			7-21	X112	
PAHZZ	6250-228-0382	5,6 78R587N (02660)	ALY SOCKET, ELECTRON TUBE X114 USED IN ALX-.	EA	4				*	*	*		3	7-18	X114	
PAHZZ	6250-228-0382	K33991 (76489)	ALY SOCKET, ELECTRON TUBE X116 USED IN ALX-.	EA	REF				*	*	*			7-21	X116	
PAHZZ	6250-228-0382	1,2,3,4 AND ALY-5,6 K33991 (76489)	ALY SOCKET, ELECTRON TUBE X117 USED IN ALX-.	EA	REF				*	*	*			7-21	X117	
PAHZZ	6250-228-0382	1,2,3,4 AND ALY-5,6 K33991 (76489)	ALY SOCKET, ELECTRON TUBE X118 USED IN ALX-.	EA	REF				*	*	*			7-21	X118	
PAHZZ	5935-161-1649	K33991 (76489)	ALY SOCKET, ELECTRON TUBE X115 USED IN ALX-.	EA	1				*	*	*		3	7-21	X115	
PAHZZ	5935-259-2607	1,4 M7413381-1 (79500)	ALX SOCKET, ELECTRON TUBE XV110 8 PIN OCTAL. USED IN ALY-7	EA	1				*	*	*		3			
PAHZZ	6250-228-0382	78R547M (02660)	ALY SOCKET, ELECTRON TUBE XV114 BAYONET..... CA: 'A, DOUBLE CONTACT BASE USED IN ALY-	EA	4				*	*	*		3			
PAHZZ	6250-228-0382	33991 (76489)	ALY SOCKET, ELECTRON TUBE XV116 BAYONET..... CANDELABRA, DOUBLE CONTACT BASE, USED IN ALY-7	EA	REF				*	*	*					
PAHZZ	6250-228-0382	33991 (76489)	ALY SOCKET, ELECTRON TUBE XV117 BAYONET..... CANDELABRA, DOUBLE CONTACT BASE, USED IN ALY-7	EA	REF				*	*	*					
PAHZZ	6250-228-0382	33991 (76489)	ALY SOCKET, ELECTRON TUBE XV118 BAYONET..... CANDELABRA, DOUBLE CONTACT BASE, USED IN ALY-7	EA	REF				*	*	*					
PAHZZ	5935-892-9515	33991 (76489)	ALY SOCKET, ELECTRON TUBE NO-REF-DESIG..... OCTAL USED IN ALX-7	EA	1				*	*	*		3			
PAHZZ	5935-052-2032	784-1471 (00341)	ALY SOCKET, ELECTRON TUBE NO-REF-DESIG TYPE. 8 DINEPTAL USED IN ALY-7 143-42-11-01 (71785)	EA	1				*	*	*		3			

SECTION II.

TM 11-6625-297-40P

(1) SMR CODE	(2) FEDERAL STOCK NUMBER	(3) DESCRIPTION REFERENCE NUMBER & MFR. CODE USABLE ON CODE	(4) UNIT OF MEAS	(5) QTY INC IN UNIT	(6) 30-DAY GS MAINT ALLOWANCE			(7) 30-DAY GS MAINT ALLOWANCE			(8) 1-YR ALW PER 100 EQUIP OUTGCTY	(9) DEPOT MAINT ALW PER 100 EQUIP	(10) ILLUSTRATION	
					(a)	(b)	(c)	(a)	(b)	(c)			(a)	(b)
					1-20	21-50	51-100	1-20	21-50	51-100			FIGURE NO.	ITEM NO.
PAHZZ	5360-405-1927	SPRING, HELICAL, COMPRESSION Q114 USED IN ALX-1,2	EA	2				*	*	*		3		O114
PAHZZ	6625-497-9585	SP111 (80249) STRIP, ATTENUATOR E1010L USED IN ALX-1,2,4	EA	1				*	*	*		3	3-6	
PAHZZ	5905-399-7230	A2049 (96296) STRIP, ATTENUATOR E1010R USED IN ALX-1,2,4	EA	1				*	*	*		3	3-6	
PAHZZ	5307-206-7185	A2052 (96296) STUD, SHOULDERED AND STEPPED H116 USED IN ALX-2	EA	2				*	*	*		2		H116
PAHZZ	5930-033-7784	SM2324 (80249) SWITCH, ROTARY S103 4 POSITION 110V..... 0.5 AMP DC 28V. 1 AMP AC	EA	1				*	*	*		5	5-2	S103
PAHZZ	5930-548-9967	T713076P1 (71590) SWITCH, ROTARY S103 USED IN ALX-3	EA	1				*	*	*		5	5-2A	S103
PAHZZ	5930-567-2030	1443 (71590) SWITCH, ROTARY S103 USED IN ALY-5	EA	1				*	*	*		5	5-2A	S103
PAHZZ	5930-050-2639	C0165-05087 (24046) SWITCH, TOGGLE S101 USED IN ALX-1	EA	1				*	*	*		5	5-2B	S101
PAHZZ	5930-655-1575	S723K (81349) SWITCH, TOGGLE S101 USED IN ALX-2,3,4 AND ALY-5,6,7	EA	1				*	*	*		5	5-2B	S101
PAHZZ	5930-655-1514	MS35059-22 (96906) SWITCH, TOGGLE S102 USED IN ALX-1,2,3,4 AND ALY-5,6,7	EA	1				*	*	*		5	5-2B	S102
PAHZZ	5940-853-0100	MS35058-22 (96906) TERMINAL STUD, INSULATED NO-REF-DESIG.... SOLDER LUG FOR AC VOLT INPUT USED IN ALY-5	EA	2				*	*	*		1		
PAHZZ	5305-639-7473	X1995C (71279) THUMBSCREW H101 F/TUBE SHIELD BRKT SS #10-32NF-2 THD T/16 IN LG USED IN ALX-1	EA	2				*	*	*		5		H101
PAHZZ	5305-297-7520	T813730P1 (79500) THUMBSCREW H133 PASSIVATED # 1/4 IN. ZONC-2 THD 1-1/2 IN. LG USED IN ALX-2	EA	2				*	*	*		5		H133
PAHZZ	5950-646-2395	A3979 (80249) TRANSFORMER, POWER STEP-DOWN AND STEP-UP .. T102 USED IN ALX-1,2	EA	1				*	*	*		3	5-1	T102
PAHZZ	5950-295-8023	425172 (79500) TRANSFORMER, POWER, STEP-DOWN AND STEP UP .. T102 USED IN ALX-3	EA	1				*	*	*		3	5-1	T102
PAHZZ	5950-698-0743	D9-3003 (72598) TRANSFORMER, POWER STEP-DOWN AND STEP-UP .. T102 USED IN ALX-4 AND ALY-5	EA	1				*	*	*		3	5-1	T102
PAHZZ	5950-646-3399	NE15725 (82005) TRANSFORMER, POWER, STEP-DOWN AND STEP-UP .. T102 USED IN ALY-6	EA	1				*	*	*		3	5-4	T102
PAHZZ	5950-226-5568	C2207 (91820) TRANSFORMER, POWER, STEP-DOWN AND STEP-UP .. T102 USED IN ALY-7	EA	1				*	*	*		3	5-4	T102
		190C00140 (06053)	ALY											

SECTION II.

TM 11-6625-297-40P

(1) SMR CODE	(2) FEDERAL STOCK NUMBER	(3) DESCRIPTION REFERENCE NUMBER & MFR. CODE USABLE ON CODE	(4) UNIT OF MEAS	(5) QTY INL IN UNIT	(6) 30-DAY DS MAINT ALLOWANCE			(7) 30-DAY SS MAINT ALLOWANCE			(8) 1-YR ALW PER 100 EQUIP CNTCTY	(9) DEPOT MAINT ALW PER 100 EQUIP	(10) ILLUSTRATION	
					(a)	(b)	(c)	(a)	(b)	(c)			(a)	(b)
					1-20	21-30	31-100	1-20	21-30	31-100			FIGURE NO.	ITEM NO.
PAHZZ	5950-257-3136	TRANSFORMER, RADIO FREQUENCY L102 USED.. IN ALX-1,2,3,4	EA	1				*	*	*		3	5-3	L102
PAHZZ	5950-547-8037	A4010-2 (80249) TRANSFORMER, RADIO FREQUENCY L102 USED.. IN ALY-5,6	EA	1				*	*	*		3	5-2	L102
PAHZZ	5950-405-4209	B1427-2 (91820) TRANSFORMER, RADIO FREQUENCY T101 USED.. IN ALX-1,2,4	EA	1				*	*	*		3	5-2	T101
PAHZZ	5950-396-3259	A4010-3 (80249) TRANSFORMER, RADIO FREQUENCY T101 USED.. IN ALX-3	EA	1				*	*	*		3	5-3	T101
PAHZZ	5950-681-1748	G1-3002-3 (72398) TRANSFORMER, RADIO FREQUENCY T101 USED.. IN ALY-6	EA	1				*	*	*		3	5-3	T101
PAHZZ	5950-054-6432	B1427-3 (91820) TRANSFORMER, RADIO FREQUENCY T101 1-3/4. TURNS, UNTAPPED 2.9 OH TO 7.5 OH USED IN ALY-7	EA	1				*	*	*		3	5-3	T101
PAOZZ	5985-069-3092	190800130-03 (06053) TRANSMISSION LINE CG-182/APM-40 E203.... USED IN ALX-1,2,3,4 AND ALY-5,6,7	EA	1				*	*	*		3	5-8	E203
PAHZZ	5310-407-9547	CG182APM40 (80058) WASHER, FLAT 0103 SS M/NOTCH ON RIM ... USED IN ALX-1	EA	18				*	*	*		5		0103
PAHZZ	5310-322-4522	A2879C (96254) WASHER, KEY 0103 SS 1 KEY AND 1 KEYWAY. ON OUTSIDE EDGE USED IN ALX-2,4	EA	13				*	*	*		5		0103
PAHZZ	5310-209-4976	WA1127 (80249) WASHER, KEY 0111 1 EXT KEY 0.039 IN. LG USED IN ALX-2,3,4	EA	5				*	*	*		5		0111
PAHZZ	5310-537-8356	WA1128 (80249) WASHER, KEYWAY 0112 12 KEYWAYS ON INNER. EDGE USED IN ALX-3	EA	1				*	*	*		3		0112
PAHZZ	5310-194-0690	A16-3009 (72398) WASHER, SERRATED 0112 12 SERRATIONS USED IN ALX-1,2,4	EA	1				*	*	*		5		0112
PAHZZ	5340-298-7497	WA1126 (80249) WASHER, SPRING TENSION 0113 U-BEND USED. IN ALX-1	EA	1				*	*	*		5		0113
PAHZZ	6625-434-1087	B424-651 (72314) WAVEGUIDE AND WAVEMETER ASSEMBLY E101... USED IN ALY-5,6	EA	1				*	*	*		3	7-8	E101
PADZZ	6625-082-3977	00165-05140 (11242) WAVEGUIDE ASSEMBLY NO-REF-DESIG USED IN ALY-7	EA	1								3		
PAHZZ	6625-051-9743	190800024 (06053) WAVEMETER E101 8470 MC TO 9630 MC PORM. 5PCT CALIBRATED DIAL TYPE USED IN ALY-7	EA	1				*	*	*		3	7-8	E101
PAHZZ	6625-243-1257	784-9158 (00341) WINDOW, CATHODE, RAY TUBE 0106 GREEN USED IN ALX-1,2,4, AND ALY-5,6	EA	1				*	*	*		40		0106
		A862 (91820)												

SECTION II.

TM 11-6625-297-40P

(1) SMR CODE	(2) FEDERAL STOCK NUMBER	(3) DESCRIPTION REFERENCE NUMBER & MFR. CODE HANDLE ON CODE	(4) UNIT OF MEAS	(5) QTY IN UNITS	(6) 30-DAY DE MAINT ALLOWANCE			(7) 30-DAY GS MAINT ALLOWANCE			(8) 1-YR ALY PER 100 EQUIP CHNGCY	(9) DEPOT MAINT ALY PER 100 EQUIP	(10) ILLUSTRATION	
					(a)	(b)	(c)	(a)	(b)	(c)			(a)	(b)
					1-20	21-50	51-100	1-20	21-50	51-100			FIGURE NO.	ITEM NO.
PAHZZ	5840-356-4963	WINDOW, OBSERVATION 0106 CLEAR PLASTIC . USED IN ALX-3	EA	1				*	*	*		40		0106
PAHZZ	6625-713-5230	SC8103869 (80063) ALX WINDOW, DIAL 0110 USED IN ALX-2,4 AND... ALY-5,6	EA	1				*	*	*		40		0110
PAHZZ	6625-643-4149	B0165-05204 (03877) WINDOW, METER NO-REF-DESIG USED IN ALY-.	EA	1				*	*	*		40		
PAOZZ	5120-569-0277	190A00280 (06053) ALY WRENCH, TUNING BAR M108 USED IN ALY-5,6, 7	EA	1				*	*	*		3	1-1	H108
PAOZZ	6625-502-6077	B0165-05C61 (11242) ALY CABLE, ASSEMBLY POWER, ELECTRICAL CX-337/U .	EA	1				*	*	*		5		
PAOZZ	5995-221-5207	W201 USED IN ALX-1,2,3,4 CX337U (80058) ALX CABLE ASSEMBLY, POWER, ELECTRICAL CX-1324/U NO-REF-DESIG USED IN ALX-1,2,3,4 AND ALY-	EA	1				*	*	*		5		
PAOZZ	6625-681-8497	5,6,7 CX1324U (80058) CABLE ASSEMBLY, POWER, ELECTRICAL CX-3277/U NO-REF-DESIG USED IN ALY-5,6,7	EA	1				*	*	*		5		
PAOZZ	6625-223-5302	CX3277U (80058) ALY CABLE ASSEMBLY, RADIO FREQUENCY CG-92F/U ..	EA	1				*	*	*		5		
PAOHD	6625-301-4738	W205 USED IN ALX-1,2,3,4 AND ALY-5,6,7 CG92FU (80058) CASE CY-245/U NO-REF-DESIG USED IN ALX-	EA	1				*	*	*		3		
PAOHD	6625-405-7589	1,2,3,4, AND ALY-5,6,7 CY245U (80058) CARRYING CASE CY-246/U NO-REF-DESIG.....	EA	1				*	*	*		3		
PAOHD	6625-574-7975	USED IN ALX-1,2,3,4 CY246U (80058) ALX CASE TEST SET CY-1962/U NO-REF-DESIG....	EA	1				*	*	*		3		
PAOHD	6625-574-7974	USED IN ALY-5,6,7 CY1962U (80058) ALY MOUNTING MT-1671/U NO-REF-DESIG USED IN	EA	1				*	*	*		3		
PAOHD	6625-665-3915	ALY-5,6,7 MT167U (80058) ALY MOUNTING BASE MT-325/U NO-REF-DESIG USED IN ALX-1,2,3,4	EA	1				*	*	*		3		
		MT325U (80058) ALX												

SECTION IV.

TM 11-6625-297-40P

INDEX - FEDERAL STOCK NUMBER AND REFERENCE NUMBER
CROSS-REFERENCE TO FIGURE AND ITEM NUMBER

STOCK NUMBER	FIGURE NO.	ITEM NO.	STOCK NUMBER	FIGURE NO.	ITEM NO.
5120-569-0277	1-1	M108	5905-171-2004	7-22	R129
5120-569-0277		M124	5905-171-2004	7-22	R130
5120-569-0277		M106	5905-171-2004	7-22	R143
5120-569-0277		M117	5905-171-2004	7-22	R145
5120-569-0277		M133	5905-171-2004	7-22	R183
5120-569-0277		M125	5905-183-6070	7-22	R190
5120-569-0277		O105	5905-183-6070	7-22	R191
5120-569-0277		M106	5905-183-6070	5-1	R173
5120-569-0277		M101	5905-190-8876	5-3	R171
5120-569-0277		M116	5905-190-8876	7-22	R158
5120-569-0277		O112	5905-190-8889	7-22	R126
5120-569-0277		O111	5905-190-8889	7-22	R136
5120-569-0277		O103	5905-192-0640	7-22	R121
5120-569-0277		O103	5905-192-0640	7-22	
5120-569-0277		O112	5905-192-0667	5-3	R134
5120-569-0277		M109	5905-192-2069	5-4	R140
5120-569-0277			5905-192-3982	5-1	R119
5120-569-0277			5905-192-3982	7-6	R184
5120-569-0277			5905-192-3982	7-22	R128
5120-569-0277			5905-192-3982	7-22	R178
5120-569-0277			5905-192-3982	7-22	R179
5120-569-0277			5905-192-3982	5-2	R111
5120-569-0277		E116	5905-192-3982	7-22	R152
5120-569-0277			5905-192-3982	7-22	R180
5120-569-0277		E116	5905-195-6502	7-22	R131
5120-569-0277		O101	5905-195-6761	5-3	R139
5120-569-0277			5905-195-6761	5-3	R146
5120-569-0277		O113	5905-195-6761	5-3	R156
5120-569-0277		M129	5905-195-6761	7-22	R101
5120-569-0277			5905-195-6761	7-22	R122
5120-569-0277		M128	5905-195-6761	7-22	R125
5120-569-0277			5905-195-6761	7-22	R141
5120-569-0277		M143	5905-195-6761	7-22	R148
5120-569-0277			5905-195-6761	7-22	R164
5120-569-0277			5905-195-6761	7-22	R134
5120-569-0277		M103	5905-195-6806	7-22	R177
5120-569-0277		E120	5905-195-6806	7-22	R194
5120-569-0277			5905-211-5860	7-22	R112
5120-569-0277			5905-211-5860	7-22	R176
5120-569-0277		E121	5905-226-2491	7-22	R135
5120-569-0277		E121	5905-226-5146	5-7	
5120-569-0277			5905-223-4261	5-1	R163
5120-569-0277		E120	5905-228-3340	7-22	R153
5120-569-0277		M103	5905-228-3340	7-22	R167
5120-569-0277		E121	5905-252-4180	5-3	R137
5120-569-0277		E120	5905-252-4180	5-1	R182
5120-569-0277			5905-252-4180	5-2	R144
5120-569-0277		E121	5905-252-4180	5-4	R140
5120-569-0277			5905-252-4180	5-2	R197
5120-569-0277			5905-263-2331	7-22	R127
5120-569-0277		O114	5905-263-2331	5-2	R197
5120-569-0277			5905-263-2331	5-1	R163
5120-569-0277		O106	5905-263-2338	5-2	R133
5120-569-0277		O121	5905-279-1717	5-1	R189
5120-569-0277		O122	5905-279-1717	5-2	R111
5120-569-0277	5-4	R140	5905-279-1717	7-22	R152
5120-569-0277	5-1	R163	5905-279-1717	7-22	R180
5120-569-0277	7-22	R139	5905-279-1717	7-22	R188
5120-569-0277	5-1	R165	5905-279-1719	7-22	R102
5120-569-0277	5-1	R193	5905-279-1719	7-22	R103
5120-569-0277	5-1	R182	5905-279-1722	7-22	R196
5120-569-0277	5-2	R144	5905-279-1722	7-22	R195
5120-569-0277	7-22	R117	5905-279-1880	7-22	R131
5120-569-0277	7-22	R193	5905-279-1880	7-22	R155
5120-569-0277	7-22	R167	5905-279-2315	7-22	R161
5120-569-0277	7-22	R127	5905-279-2315	5-3	R169
5120-569-0277	7-22	R117	5905-279-2641	5-3	R134
5120-569-0277	5-1	R165	5905-279-2641	7-22	R108
5120-569-0277	7-22	R121	5905-279-2641	7-22	R109
5120-569-0277	5-3	R138	5905-279-3496	5-3	R170
5120-569-0277	7-22	R123	5905-279-3517	7-22	R132
5120-569-0277	7-22	R162	5905-295-3203	7-22	R149
5120-569-0277	7-22	R181	5905-295-3209	7-22	R104
5120-569-0277	7-22	R192	5905-295-3209	7-22	R124
5120-569-0277	5-3	R185	5905-295-3410	5-1	R172
5120-569-0277	7-8	R105	5905-295-3410	7-8	R168
5905-171-2004	7-22	R110	

STOCK NUMBER	FIGURE NO.	ITEM NO.	STOCK NUMBER	FIGURE NO.	ITEM NO.
5909-295-3410	7-22	R116	5910-101-5766	7-22	C139
5905-295-3410	7-22	R118	5910-112-6794	5-1	C140
5905-295-3410	7-22	R142	5910-112-6013	5-1	C122
5905-295-3410	7-22	R147	5910-112-6013	5-1	C123
5905-295-3410	7-22	R159	5910-112-6014	5-2B	C120
5905-295-3410	7-22	R160	5910-112-6977	5-1	C124
5905-295-3410	7-22	R166	5910-112-6977	5-2B	C125
5905-298-3850	5-4	R174	5910-112-7093	5-1	C134
5905-299-2004	7-22	R190	5910-112-7093	5-1	C135
5905-299-2004	7-22	R151	5910-126-9179	7-0	C117
5905-299-2004	7-22	R157	5910-126-9196	5-1	C115
5905-299-2025	7-22	R102	5910-126-9212	7-0	C119
5905-299-2025	7-22	R103	5910-126-9237	7-0	C119
5905-299-2034	7-22	R106	5910-129-1394	7-0	C137
5905-299-2034	7-22	R107	5910-129-9231	5-1	C121
5905-399-7230			5910-129-9231	5-1	C128
5905-473-5251	7-22	R108	5910-160-1149	5-1	C120
5905-473-5251	7-22	R109	5910-186-8415	5-1	C134
5905-501-7307	7-22	R135	5910-186-8415	5-1	C135
5905-502-8523	7-22	R135	5910-187-6582	5-1	C130
5905-503-6218	5-2	R133	5910-193-0359	5-1	C116
5905-518-9422	5-4	R174	5910-193-0359	5-1	C127
5905-532-1948	7-22	R135	5910-262-8547	5-1	C130
5905-532-2265	5-4	R140	5910-280-5829	5-1	C134
5905-539-1559	5-1	R163	5910-280-5829	5-1	C135
5905-539-2568	5-1	R193	5910-507-3681	7-0	C137
5905-539-2568	5-2	R133	5910-577-9150	7-22	C106
5905-539-4576	7-22	R153	5910-577-9150	7-22	C113
5905-539-4576	7-22	R167	5910-649-1804	7-0	C137
5905-539-4578	5-1	R165	5910-660-7083	5-1	C128
5905-539-4578	5-1	R174	5910-660-7477	7-0	C137
5905-539-5000	5-1	R193	5910-666-5962		C143
5905-542-8019	7-22	R135	5910-666-6358	5-1	C101
5905-542-8033	7-22	R153	5910-666-6358	5-2	C112
5905-542-8033	7-22	R167	5910-666-6358	5-2	C11P
5905-542-8221	5-1	R165	5910-666-6358	5-2	C141
5905-542-8292	5-1	R163	5910-666-6358	7-22	C102
5905-549-9891	5-2	R133	5910-666-6358	7-22	C103
5905-552-2254	5-4	R140	5910-666-6358	7-22	C104
5905-552-5476	5-4	R174	5910-666-8230	5-1	C134
5905-577-2222	5-1	R182	5910-666-8230	5-1	C135
5905-577-2222	5-2	R144	5910-669-1484	5-1	C128
5905-615-5993	5-1	R163	5910-827-4642	5-1	C107
5905-663-5626	5-2	R197	5910-827-4642	5-2	C105
5905-643-5626	7-22	R127	5910-827-4642	5-2	C110
5905-643-6284	5-1	R182	5910-827-4642	5-2	C111
5905-643-6284	5-2	R144	5910-827-4642	7-22	C142
5905-643-6284	7-22	R117	5910-840-9738	7-7	C126
5905-644-6693	7-22	R153	5910-842-8564	5-1	C132
5905-644-6693	7-22	R167	5910-842-8564	5-1	C133
5905-644-7825	5-1	R165	5910-842-8564	5-1	C139
5905-646-5979	7-22	R127	5910-842-8564	5-2	C108
5905-660-5295	5-1	R182	5910-842-8564	5-2	C109
5905-660-5295	5-2	R144	5910-842-8564	7-7	C129
5905-660-5295	7-22	R117	5920-244-5150		
5905-682-1383	5-1	R193	5920-280-3144		
5905-723-3921	5-2	R197	5920-280-4960	7-0	
5910-052-1462	5-1	C130	5920-285-0755		
5910-052-1464	5-1	C128	5920-474-6125	7-0	
5910-082-4764	7-0	C137	5920-855-4260	7-0	
5910-101-4023	5-1	C101	5930-033-7784	5-2	S103
5910-101-4023	5-2	C112	5930-050-2639	5-2B	S101
5910-101-4023	5-2	C118	5930-548-9967	5-2A	S103
5910-101-4023	5-2	C141	5930-567-2030	5-2A	S103
5910-101-4023	7-22	C102	5930-655-1514	5-2B	S102
5910-101-4023	7-22	C103	5930-655-1575	5-2B	S101
5910-101-4023	7-22	C104	5935-052-2032		
5910-101-4883	7-7	C126	5935-063-5789	7-21	X107
5910-101-5599	7-22	C114	5935-129-9358		
5910-101-5616	5-1	C107	5935-129-9358	7-21	
5910-101-5616	5-2	C105	5935-149-3232	7-0	X110
5910-101-5616	5-2	C110	5935-161-1649	7-21	X115
5910-101-5616	5-2	C111	5935-161-8699		
5910-101-5616	7-22	C106	5935-161-8699	7-21	
5910-101-5616	7-22	C114	5935-189-2962	5-1	J102
5910-101-5766	5-1	C132	5935-192-4760		P203
5910-101-5766	5-1	C133	5935-192-4760		P204
5910-101-5766	5-2	C108	5935-192-4789	5-2	J101
5910-101-5766	5-2	C109	5935-192-4869	5-2	J101
5910-101-5766	7-22	C129	5935-201-3561	5-1	J102

STOCK NUMBER	FIGURE NO.	ITEM NO.	STOCK NUMBER	FIGURE NO.	ITEM NO.
5935-224-5617	7-21	X110	5960-300-0061		E100
5935-237-6444	7-21	X109	5960-330-2020		E100
5935-256-8371		P101	5960-330-2029		M114
5935-257-9694	7-21	X111	5960-330-2030		
5935-257-9694	7-21	X112	5960-503-4409		E123
5935-259-2607			5960-547-5312		E107
5935-404-7808		P101	5960-594-2013		V112
5935-518-9653		P202	5960-617-6097	5-1	
5935-539-2650			5960-650-0599		
5935-577-8776		P203	5960-658-2092		
5935-577-8776		P206	5960-774-9478		M114
5935-636-7145		P202	5970-117-5197		E117
5935-892-9515			5970-175-2736		E122
5940-052-1477			5970-285-0076		E122
5940-186-8552		J103	5970-285-0077		E117
5940-853-0100			5970-351-6109		E124
5950-054-0374	7-8	L103	5970-519-8150		E124
5950-054-6416	5-2	L105	5970-539-6354		
5950-054-6432	5-3	T101	5970-548-3071		E117
5950-057-3166	5-1		5985-069-3092	5-8	E203
5950-089-0075	5-1	L101	5985-241-6701	2-9	E201
5950-221-0301	7-8		5985-295-9663		
5950-223-3876	5-2	L105	5985-337-6487	5-6	E202
5950-226-5568	5-4	T102	5985-537-5732		Z101
5950-256-2374	5-1	L101	5995-195-9684		J104
5950-257-3136	5-3	L102	5995-221-5207		
5950-295-8023	1-1	T102	5995-280-1176		
5950-396-3259	5-3	T101	6145-161-4601	5-2A	
5950-405-4209	5-2	T101	6145-170-7837	5-6	
5950-498-0129	7-8		6145-504-1015	5-6	
5950-507-5584	5-2	T101	6145-914-9012		
5950-508-2402	7-8	L103	6240-057-2887		
5950-510-1702	5-2	L104	6240-057-2887	7-8	
5950-510-1702	5-2	L106	6250-054-0351		
5-50-547-8037	5-2	L102	6250-159-0995	7-8	
5950-547-8038	5-1	L101	6250-228-0382		
5950-547-8039	7-8	L103	6250-228-0382	7-18	X114
5950-568-5000	7-8	L103	6250-228-0382	7-21	X116
5950-645-3566	5-1	L104	6250-228-0382	7-21	X117
5950-645-3566	5-1	L106	6250-228-0382	7-21	X118
5950-646-2395	5-1	T102	6625-033-7798		
5950-646-3399	5-4	T102	6625-055-5981		
5950-648-3214	5-2	L105	6625-051-9743	7-8	E101
5950-650-4931	5-1		6625-082-3977		
5950-681-1748	5-3	T101	6625-219-6172		O121
5950-698-0743	5-1	T102	6625-219-6172		O122
5950-892-0278	5-1	L102	6625-219-6225	7-8	
5960-054-7639			6625-223-5302		
5960-100-5268	5-1	V101	6625-240-3751		E100
5960-100-5268	5-1	V106	6625-243-1257		O106
5960-100-5268	5-1	V113	6625-288-5117		O119
5960-107-7605	5-1	V115	6625-301-4738		
5960-108-0257	5-1	V107	6625-303-3386	5-28	M100
5960-114-4849	5-1	V110	6625-351-4791		O118
5960-120-8944	5-1	E123	6625-355-9359	1-1	A102
5960-151-7562			6625-404-7543		
5960-151-7574			6625-404-8291	5-8	E204
5960-166-7656	5-1	V102	6625-405-1447		O102
5960-166-7666	5-1	V104	6625-407-1448		O105
5960-170-4575	5-28	V105	6625-405-1449		O107
5960-100-3577	5-1	V103	6625-405-7589		
5960-100-3577	5-1	V108	6625-434-1087	7-8	E101
5960-100-3577	5-1	V109	6625-497-9585		
5960-100-3600	5-1	V114	6625-498-0311		O117
5960-100-3600	5-1	V116	6625-502-6077		
5960-100-3600	5-1	V117	6625-536-9259	5-1	E101
5960-100-3600	5-1	V118	6625-574-7974		
5960-100-3945	5-1	V111	6625-5747975		
5960-221-0075	5-1		6625-643-4149		
5960-249-4973			6625-665-3915		
5960-262-1703	5-1	V111	6625-681-8497		O110
5960-264-3009			6625-713-5230		
5960-204-6134	5-1		6695-052-1538		O101
5960-296-1532			9320-674-5838		

SECTION IV.

TM 11-6625-297-40P

REFERENCE NO.	MFR CODE	FIG. NO.	ITEM NO.	REFERENCE NO.	MFR CODE	FIG. NO.	ITEM NO.
AN3102A1056-3P	80044	5-1	J102	CH25E102J	81349	5-2	C112
AN3102A18-4S	80044	7-8	X110	CH25E102J	81349	5-2	C118
AN3106A105L3S	80044			CH25E102J	81349	5-2	C141
AN931A3-5	80044		E116	CH25E102J	81349	7-22	C102
AN931A47	80044			CH25E102J	81349	7-22	C103
A168UP	56232	2-9	E201	CH25E102J	81349	7-22	C104
A13-3004-1	72598		E117	CH308102K	81349	5-1	C101
A13-3004-2	72598		E122	CH308102K	81349	5-2	C112
A13-3010	72598		E120	CH308102K	81349	5-2	C118
A14182	80249		M145	CH308102K	81349	5-2	C116
A14163	80249		M108	CH308102K	81349	7-22	C102
A16-3009	72598		O112	CH308102K	81349	7-22	C108
A2847	37942	5-2	J101	CH308102K	81349	7-22	C104
A2849	96236		O105	CH358103IN3	81349	5-1	C132
A2852	96236			CH358103IN3	81349	5-1	C133
A2864	96236	7-8		CH358103IN3	81349	5-1	C139
A2875C	96236		O103	CH358103IN3	81349	5-2	C109
A32-3055	72598		E108	CH358103IN3	81349	7-7	C129
A35-3036	72598	5-28	M108	CH35C103K	81349	5-1	C132
A3956	80249		O121	CH35C103K	81349	5-1	C133
A3979	80249		M133	CH35C103K	81349	5-1	C139
A3989	80249		E107	CH35C103K	81349	5-2	C108
A4010-2	80249	5-3	L102	CH35C103K	81349	5-2	C109
A4010-3	80249	5-2	T101	CP1023-17	81349	7-22	C129
A4017	80249	1-1	A102	CP1023-20	79213	7-22	C139
A4167	80249	3-7		CP1023-20	19213		
A4241	80249		O118	CP1023-20	79213		
A867	91820		O106	CP528IEG104K1	81349	5-1	C121
A863	91820			CP530IEF104K	81349	5-1	C128
A805-2	91820			CP530IEF104K	81349	5-1	C128
A889	91820	7-8	L103	CP530IEF104K	81349	7-8	C117
A9-3008	72598	7-8		CP530IEF104K	81349	7-8	C119
A9030	24018	5-1	C128	CP530IEF104K	81349	5-1	C140
A980	91820	5-2	L105	CP530IEF104K	81349	5-1	C116
BP1233	80249		O105	CP530IEF104K	81349	5-1	C127
BP1234A	80249		O102	CP530IEF104K	81349	5-1	C124
B0165-05061	11242	1-1	M108	CP530IEF104K	81349	5-1	C122
B0165-05145	12645	7-8	C137	CP530IEF104K	81349	5-1	C123
B0165-0517-2	ZZZZZ			CP530IEF104K	81349	5-28	C120
B0145-05204	09877		O110	CP658IEF504K1	81349	5-28	C129
B13-3007	72598		O121	CP658IEF504K1	81349	7-1	C115
B1401	91820	7-22	R135	CP658IEF504K1	81349	7-8	C119
B1404-00	97979	7-22	R135	CP708IEH105K1	81349	5-1	C134
B1402	81820	5-1	R163	CP708IEH105K1	81349	5-1	C135
B1402-00	97979	5-1	R163	CP70EIEH105K	81349	5-1	C135
B1403	81820	5-1	R165	CP70EIEH105K	81349	5-1	C134
B1403-00	97979	5-1	R165	CP70EIEH105K	81349	5-1	C135
B1404	91820	5-1		CP70EIEH105K	81349	5-1	C130
B1413-1	91820		E123	CP70EIEH105K	80058		
B1418	91820		O122	CP70EIEH105K	80058		
B1429-2	91820	5-2	L102	CP70EIEH105K	80058		
B1427-3	91820	5-3	T101	CP70EIEH105K	80058		
B1434-6	91820		O101	CP70EIEH105K	80058		
B33-3001	72598			CO-3HGF3-16-0360	81349	5-6	
B33-3002	72598			CO165-05087	24046	5-2A	S103
B33-3025	72598		E121	CO165-05096-1	12065	5-1	L101
B424-651	72914		O113	CO165-050963	12065	5-2	T101
B9071-26T	06650		M124	CO165-0511	12065	7-8	L103
CC71HH100C	81349	7-22	C106	C2207	91820	5-4	T102
CC71HH100C	81349	7-22	C113	C2211	91820	7-8	C137
CG176AP	80058		Z101	C2220	24018		O122
CG182APH40	80058	5-8	E203	C75-16-1944	80067	5-1	C134
CG925U	80058			C75-16-1944	80067	5-1	C135
CH1SC101JN3	81349	5-1	C107	DCOP2	81349		
CH1SC101JN3	81349	5-2	C105	DD3-103	71590		C143
CH1SC101JN3	81349	5-2	C110	DD165-05140	11242	7-8	E101
CH1SC101JN3	81349	5-2	C111	D3-3008	72598	7-8	C137
CH1SC101JN3	81349	7-22	C142	D9-3003	72598	5-1	T102
CH208150K	81349	7-22	C114	E	79500		M114
CH206511JN3	81349	7-7	C126	ES0-69747-7	64959	5-4	R140
CH20C101J	81349	5-1	C107	ES91G	81348		M117
CH20C101J	81349	5-2	C109	EPI132A	80249		E123
CH20C101J	81349	5-2	C110	E02D2R008	81349	7-8	
CH20C101J	81349	5-2	C111	E02G2R00A	81349	7-8	
CH20C101J	81349	7-22	C106	E276-31BB	81349		E121
CH20C101J	81349	7-22	C114	E479A1688	72548		
CH20C511J	81349	7-7	C126	GA1004	72548		
CH25E102J	81349	5-1	C101	G1-3002-3	80249		O117
					72598	5-3	T101

REFERENCE NO.	NPR CODE	FIG. NO.	ITEM NO.	REFERENCE NO.	NPR CODE	FIG. NO.	ITEM NO.
G13-3005-1	72598		E121	RC20GE333J	81349	7-22	R192
HKP	71400			RC20GE333J	81349	9-3	R194
IM1053-2	80249		E124	RC20GE334K	81349	7-22	R112
J1089	81349	5-2	J101	RC20GE336K	81349	7-22	R176
JSU251V3100	01521	5-1	R193	RC20GF432J	81349	5-3	R169
JU1041	01121	7-22	R193	RC20GF473K	81349	5-1	R172
JU1041	01121	7-22	R167	RC20GF473K	81349	7-6	R168
JU2531P3200	01121	5-1	R163	RC20GF473K	81349	7-22	R114
JU5021P3048	01121	7-22	R127	RC20GF473K	81349	7-22	R116
K10061	76489		M103	RC20GF473K	81349	7-22	R118
K23901	76489	7-18	X114	RC20GF473K	81349	7-22	R142
K23901	76489	7-21	X114	RC20GF473K	81349	7-22	R147
K23901	76489	7-21	X117	RC20GF473K	81349	7-22	R159
K33991	76489	7-21	X118	RC20GF473K	81349	7-22	R160
LT1007-1	80249		M128	RC20GF473K	81349	7-22	R166
LT1007-2	80249		M129	RC20GF473K	81349	7-22	R195
L223178	79500	5-1	L104	RC20GF473K	81349	7-22	R161
L423170	79500	5-1	L106	RC20GF510J	81349	7-22	R132
MS21332-3	96906			RC20GF513J	81349	5-3	R170
MS35058-22	96906	5-28	S102	RC20GF563J	81349	7-22	R121
MS35059-22	96906	5-28	S101	RC32GE6112J	81349	7-22	R109
MS90059-39	81349			RC32GE102J	81349	7-22	R108
MT167U	80058			RC32GE102K	81349	7-22	R109
MT325U	80058			RC32GE103J	81349	7-22	R195
M7413381-1	79500	7-21	X115	RC32GE103J	81349	7-22	R102
M7413805	79500		E121	RC32GE103K	81349	7-22	R103
NE12325	82005		M114	RC32GE103K	81349	7-22	R196
NE12325	82005	5-1	T102	RC32GE104K	81349	7-22	R150
NS4AM0106	81350		E122	RC32GE104K	81349	7-22	R151
NS4M0106	81350		E117	RC32GE104K	81349	7-22	R157
NS5AW0104	81349		P203	RC32GF112J	81349	7-22	R108
P10558	81349		P204	RC32GE123K	81349	7-22	R102
P10558	81349			RC32GE123K	81349	7-22	R103
O00139	92058			RC32GE124K	81349	5-1	R189
RC20GF101J	81349	7-22	R126	RC32GF154K	81349	5-2	R111
RC20GF101J	81349	7-22	R136	RC32GF154K	81349	7-22	R152
RC20GF102J	81349	7-22	R154	RC32GF154K	81349	7-22	R160
RC20GF102J	81349	7-22	R177	RC32GF154K	81349	7-22	R188
RC20GF102J	81349	7-22	R194	RC32GF154J	81349	7-22	R106
RC20GF104J	81349	5-3	R139	RC32GF154J	81349	7-22	R107
RC20GF104J	81349	5-3	R146	RC32GF154K	81349	7-22	R188
RC20GF104J	81349	5-3	R156	RC32GF103K	81349	5-1	R173
RC20GF104J	81349	7-22	R101	RC32GF203J	81349	7-22	
RC20GF104J	81349	7-22	R122	RC32GF563J	81349	7-22	R121
RC20GF104J	81349	7-22	R125	RF48A468PT483345	80064	7-8	C137
RC20GF104J	81349	7-22	R141	RG58U	80058	5-2A	
RC20GF104J	81349	7-22	R148	RG98U	80058	5-6	
RC20GF104J	81349	7-22	R164	RM221SE502UK	81349	5-2	R197
RC20GF105K	81349	5-1	R119	RV4AYRD502A	81349	7-22	R127
RC20GF105K	81349	7-8	R184	RV4ATSA155B	81349	7-22	R135
RC20GF105K	81349	7-22	R128	RV4ATSA251A	81349	5-2	R133
RC20GF105K	81349	7-22	R178	RV4ATSEK253B	81349	5-1	R163
RC20GF105K	81349	7-22	R179	RV4AUSA504B	81349	5-2	R197
RC20GF153K	81349	5-3	R171	RV4AUSA251A	81349	5-2	R133
RC20GF153K	81349	7-22	R158	RV4LAYSD105A	81349	5-4	R140
RC20GF154K	81349	5-2	R111	RV4LAYSD105A	81349	5-1	R193
RC20GF154K	81349	7-22	R152	RV4LAYSD105A	81349	5-1	R182
RC20GF154K	81349	7-22	R180	RV4LAYSD203A	81349	5-2	R144
RC20GF154K	81349	7-22	R190	RV4LAYSD251A	81349	5-1	R193
RC20GF154J	81349	7-22	R191	RV4LAYSD251A	81349	5-2	R133
RC20GF203J	81349	7-22		RV4AYTEK503A	81349	7-22	R117
RC20GF222J	81349	5-3	R137	RV4AYTS4503B	81349	5-1	R182
RC20GF222J	81349	5-3	R185	RV4AYTS4503B	81349	5-2	R144
RC20GF222J	81349	7-8	R105	RV4AYTS104A	81349	7-22	R153
RC20GF222J	81349	7-22	R110	RV4AYTS104A	81349	7-22	R167
RC20GF222J	81349	7-22	R129	RV4AYTS105A	81349	5-4	R140
RC20GF222J	81349	7-22	R130	RV4AYTS155A	81349	7-22	R135
RC20GF222J	81349	7-22	R143	RV4AYTS251A	81349	5-1	R193
RC20GF222J	81349	7-22	R145	RV4AYTS254A	81349	5-4	R174
RC20GF222J	81349	7-22	R183	RV4AYTS202A	81349	7-22	R127
RC20GF222J	81349	5-3	R134	RV4AYXSD503A	81349	5-2	R144
RC20GF222K	81349	7-22	R104	RV4AYXSD503A	81349	7-22	R117
RC20GF222K	81349	7-22	R124	RV4AYXSD503A	81349	5-1	R102
RC20GF222J	81349	7-22	R149	RV4AYYED104A	81349	7-22	R153
RC20GF222K	81349	7-22	R131	RV4AYYED104B	81349	7-22	R167
RC20GF222K	81349	7-22	R131	RV4AYYFK104B	81349	7-22	R153
RC20GF333J	81349	5-3	R138	RV4AYYFK104B	81349	7-22	R167
RC20GF333J	81349	7-22	R123	RV4AYYFK105A	81349	7-22	R135
RC20GF333J	81349	7-22	R162	RV4AYYFK251A	81349	5-2	R133
RC20GF333J	81349	7-22	R181	RV4NAYFK254A	81349	5-1	R165

REFERENCE NO.	NFR CODE	FIG. NO.	ITEM NO.	REFERENCE NO.	NFR CODE	FIG. NO.	ITEM NO.
RV4NAVFK254A	81349	5-1	R174	1908.00279	06053		
RV4NAVFK502A	81349	7-22	R127	190800330	06053	5-1	
RV4NAVSA502A	81349	5-2	R197	190800365	06053		
RV4NAVSA503A	81349	7-23	R117	190809030-000	06053	5-1	C130
RV4NAVSA503A	81349	5-1	R182	190809031-00	06053	5-1	C128
RV4NAVSA503A	81349	5-2	R144	1908100215	06053	5-2	L105
RV4NAVSD503A	81349	7-22	R117	190C00140	06053	5-4	T102
RV4NAVSD104A	81349	7-22	R153	190C00332	06053	7-8	C137
RV4NAVSD104A	81349	7-22	R167	27-18	2727		M106
RV4NAVSD105A	81349	5-4	R160	2X25	81349	5-1	V115
RV4NAVSD251A	81349	5-1	R193	2X2A	81349	5-1	V110
RV4NAVSD252A	81349	5-1	R163	2009M0	71471	5-1	C130
RV4NAVSD252A	81349	5-4	R174	2288	70485		
RV4NAVSD301A	81349	5-2	R197	230	70485		
RV4NAVSD301A	81349	7-22	R127	2341	70485		E116
RV4NAVSD301A	81349	5-1	R182	2516C8	06050	5-1	C128
RV4NAVSD301A	81349	5-2	R144	2516C9	71471	5-1	C128
RV4NAVSD301A	81349	7-22	R117	2516C9	12065	5-2	L105
RV4NAVSD301A	81349	5-1	R165	25170	71400	7-8	
SC8103069	80063		0106	2A G2	81349	5-28	V105
SC8136552	80063			38PIA	75376		E120
SC885149	80063			309-6488	76489		
SM2193	80249		O119	33991	82005		
SM2324	80249		M116	3588	80063		
SPTTT	80249		O114	4	80063	7-8	
SSS40C4	80249		M125	423172	79500	5-1	T132
S33K	81349	5-28	S101	49RS54M	02660	7-21	X110
S150P1-169X	91506			58268N4	80249		M106
S2246	71450	5-1	R165	5R4CY	81349	5-1	V111
S331	80368	5-2	L104	5R4MGA	81349	5-1	V111
S331	80368	5-2	L106	6A C/W	81349	5-1	V104
TS101P01	81349	7-21	X107	68A/T	81349	5-1	V102
TS101P02	81349			6817Y	81349	5-1	V101
TS101P02	81349			6817Y	81349	5-1	V106
TS101P02	81349	7-21		6817Y	81349	5-1	V113
L761463G17	79500			6817Y	81349	5-1	V103
L761463G17P731	79500			6817Y	81349	5-1	V108
L761463G20	79500			6817Y	81349	5-1	V109
L76146320	79500			6817Y	81349	5-1	V112
UG144AP	80058	5-8	E204	6817Y	80375	5-1	E120
UG103U	80058	5-6	E202	6817Y	00194		
UG21EU	80058		P205	6465	79500		
UG21EU	80058		P206	7034F	79500		
UG276U	80058		P101	7415806P49PTT7611463020	79500		
UP70M	81349		P202	76132-83P88	79500	5-1	E101
UP121M	81349		P202	7613202P57	01401		E116
UR	71183	5-1	J102	7614131P17	79500		
WA1126	80249		O112	761413258G17	65054	5-1	L101
WA1127	80249		C103	7713780G1	79500	7-8	L103
WA1128	80249		O111	77137	70485		O101
X1095C	71279			77137	71590	5-2	S103
000139	92058			7813876P1	02660		
IN238	81349	5-1		7813876P1	02660	7-21	X111
I3081-210	91506			7813876P1	02660	7-21	X112
I30E9-61A	91506			7813876P1	02660		
I3284	16004		E124	7813876P1	02660	7-21	
I3289	45161			7813876P1	02660		
I402	71450	5-1	R163	7813876P1	02660		
I403	05535	5-1	R165	7813876P1	79500		M101
I43-2-11-01	71785			7813876P1	79500		M109
I443	71590	5-2A	S103	7813876P1	79500	7-8	
I5081-23D	91506			7813876P1	79500		O1/7
I5002-23D	91506			7813876P1	79500		
I50E1-23D	91506			7813876P1	00341		
I529	83330	7-8		7813876P1	00341	7-8	E101
I560	88245			7813876P1	81349	5-1	V107
I60A	91605		M103	7813876P1	01009		J104
190A00131	06053			7813876P1	01009		J103
190A00211	06053	7-8	L103	7813876P1	01009		
190A00280	06053			7813876P1	01009		
190A00203	06053			7813876P1	10133		
190A00286	06053			7813876P1	71785	7-21	X105
190A00287	06053			7813876P1	71450	7-22	R135
190A00354	06053			7813876P1	02470	5-4	R140
190800024	06053			7813876P1	71450	5-4	R174
190800138-01	06053			7813876P1	81349	5-1	V114
190800130-02	06053	5-1	L101	7813876P1	81349	5-1	V116
190800138-03	06053	5-1	L102	7813876P1	81349	5-1	V117
	06053	5-3	T101	7813876P1	81349	5-1	V118

By Order of the Secretary of the Army:

CREIGHTON W. ABRAMS
General, United States Army
Chief of Staff

Official:

VERNE L. BOWERS
Major General, United States Army
The Adjutant General

Distribution:

Active Army:

USASA (3)
 CNGE (1)
 ACSC-E (2)
 USAARENED (2)
 USAMB (10)
 AMC (1)
 FORSCOM (5)
 ARADCOM (2)
 ARADCOM Rgn (2)
 OS Maj Comd (4)
 LOGCOMDS (5)
 MICOM (2)
 TECOM (2)
 USATRATCOM (4)
 HISA (ECOM) (18)
 MDW (1)
 Armies (2)
 Corps (2)
 Svc Colleges (2)
 USASESS (5)
 USAADS (2)
 USAFAS (2)
 USAARMS (2)
 USAIS (3)
 USAES (2)
 USAINTS (3)
 USACDCEC (5)

Insl (5) except
 Ft Gordon (10)
 Ft Hunchosa (10)
 WSMR (2)
 Ft Carson (10)
 Army Dep (2) except
 LEAD (14)
 SAAD (20)
 TOAD (14)
 LEAD (7)
 ATAD (10)
 Gen Dep (2)
 Sig Sec Gen Dep (2)
 Sig Dep (5)
 Sig FLDMS (1)
 USAERDAA (1)
 USAERDAW (1)
 MAAG (1)
 USARMIS (1)
 Ft Richardson (ECOM/Otc) (2)
 WRAMC (1)
 Units org under fol TOE:
 (1 cy each)
 11-158
 29-134
 29-136

NG & USAE: None.

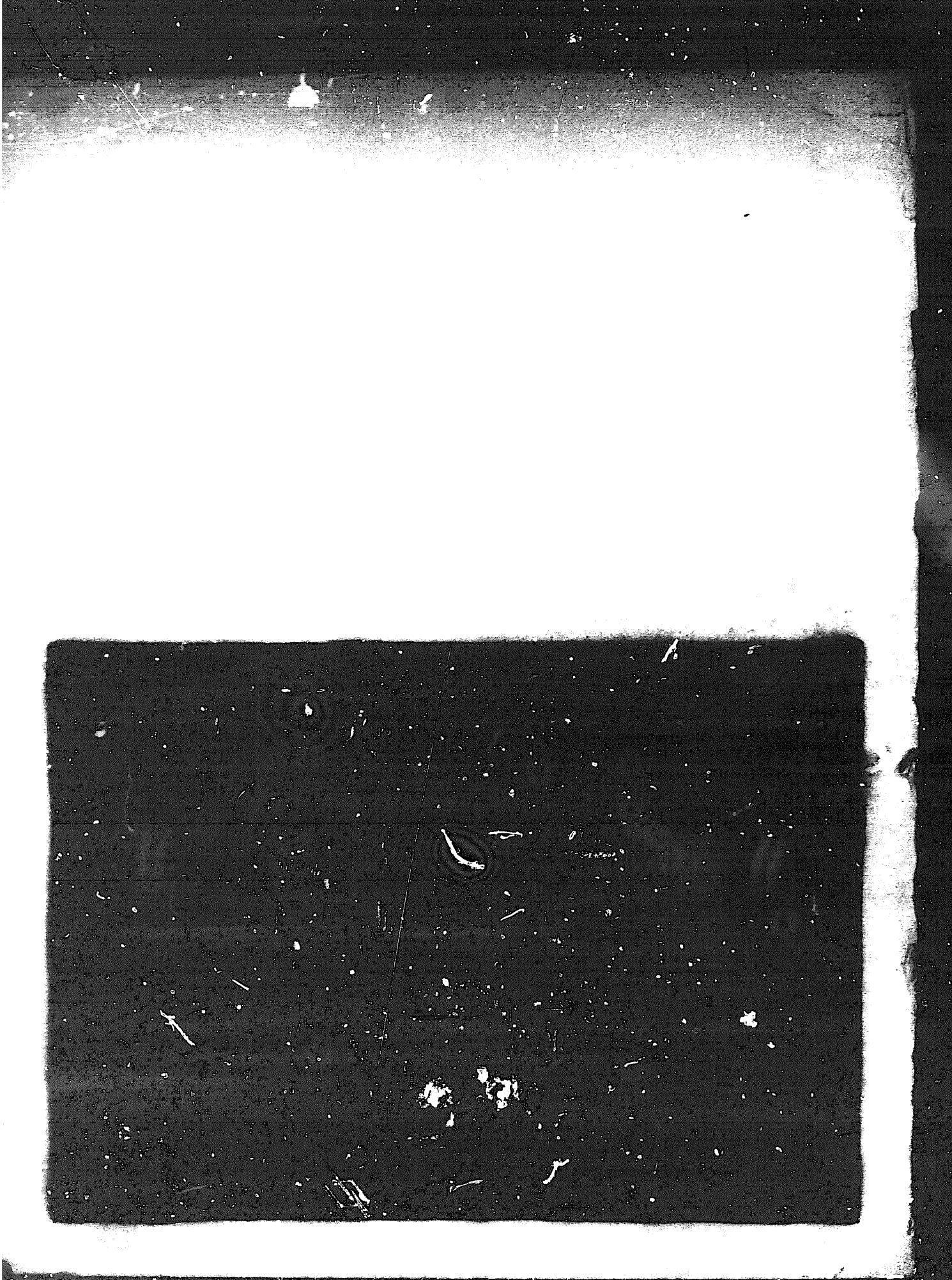
For explanation of abbreviations used, see AR 310-50.

END

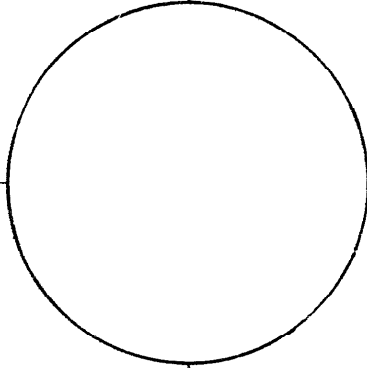
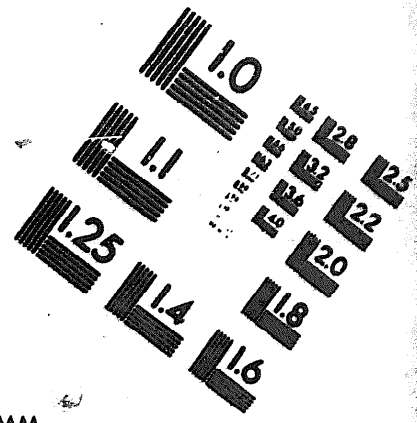
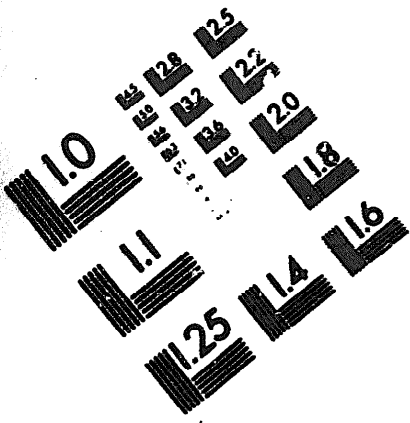
7-25-83

DATE





DEPARTMENT OF THE ARMY
MICROFORM
TEST TARGET



150 MM

1.0 mm (ø = .81 mm)

ABCDEFGHIJKLMN OPQRSTUVWXYZ 1234567890
abcdefghijklmnopqrstuvwxyz \$%&'()*+,-./:;=<=>?@*~

1.5 mm (ø = 1.09 mm)

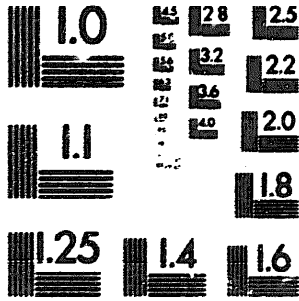
ABCDEFGHIJKLMN OPQRSTUVWXYZ 1234567890
abcdefghijklmnopqrstuvwxyz \$%&'()*+,-./:;=<=>?@*~

2.0 mm (ø = 1.37 mm)

ABCDEFGHIJKLMN OPQRSTUVWXYZ
abcdefghijklmnopqrstuvwxyz
1234567890 \$%&'()*+,-./:;=<=>?@*~

2.5 mm (ø = 1.77 mm)

ABCDEFGHIJKLMN OPQRSTUVWXYZ
abcdefghijklmnopqrstuvwxyz
1234567890 \$%&'()*+,-./:;=<=>?@*~



1.0 mm (ø = .81 mm)

ABCDEFGHIJKLMN OPQRSTUVWXYZ 1234567890
abcdefghijklmnopqrstuvwxyz \$%&'()*+,-./:;=<=>?@*~

1.5 mm (ø = 1.09 mm)

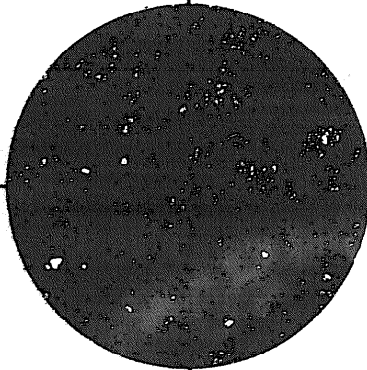
ABCDEFGHIJKLMN OPQRSTUVWXYZ 1234567890
abcdefghijklmnopqrstuvwxyz \$%&'()*+,-./:;=<=>?@*~

2.0 mm (ø = 1.37 mm)

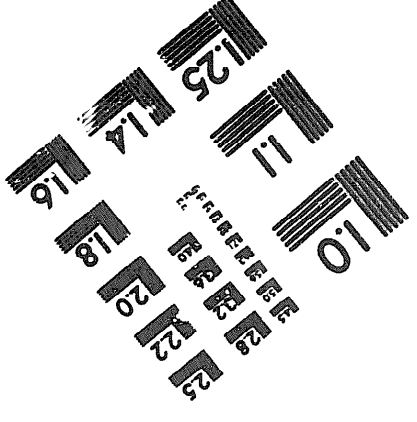
ABCDEFGHIJKLMN OPQRSTUVWXYZ
abcdefghijklmnopqrstuvwxyz
1234567890 \$%&'()*+,-./:;=<=>?@*~

2.5 mm (ø = 1.77 mm)

ABCDEFGHIJKLMN OPQRSTUVWXYZ
abcdefghijklmnopqrstuvwxyz
1234567890 \$%&'()*+,-./:;=<=>?@*~



200 MM



250 MM